



An Roinn Comhshaoil,  
Aeráide agus Comarsáide  
Department of the Environment,  
Climate and Communications



An Roinn Tithíochta,  
Rialais Áitíúil agus Oidhreacht  
Department of Housing,  
Local Government and Heritage



LOCAL AUTHORITY  
Climate Action  
Training Programme



Local Authority  
Waters  
Programme  
vibrant communities | catchment assessment | healthy waters

CCMA  
Current Leacht Bannúcháin Contae agus Cathrach  
County and City Management Association

epa  
Environmental Protection Agency  
An Ghníomhaireacht um Chaomhú Comhshaoil

---

# Environmental Services Training Group

## LOCAL AUTHORITY ROADS CONFERENCE and EXHIBITION - 2023

### Session 3 –Waste Management & The Circular Economy

Clayton Galway, September 2023



An Roinn Comhshaoil,  
Aeráide agus Comarsáide  
Department of the Environment,  
Climate and Communications



An Roinn Tithíochta,  
Rialtais Áitiúil agus Oidhreacht  
Department of Housing,  
Local Government and Heritage



LOCAL AUTHORITY  
Climate Action  
Training Programme



Local Authority  
**Waters**  
Programme  
vibrant communities | catchment assessment | healthy waters

**CCMA**  
Cumann Luath Bainistíochta Contae agus Ceitriche  
County and City Management Association

**epa** Environmental Protection Agency  
An Ghníomhaireacht um Chaomhú Comhshaoil

# LOCAL AUTHORITY ENVIRONMENTAL SERVICES TRAINING GROUP CONFERENCE– 2023

## Circular Economy National Policy

Bernie Kiely  
Principal Officer

Circular Economy Materials Management Division  
Department of the Environment, Climate and Communications





An Roinn Comhshaoil,  
Aeráide agus Comarsáide  
Department of the Environment,  
Climate and Communications



An Roinn Tithíochta,  
Rialtais Áitiúil agus Oidhreacht  
Department of Housing,  
Local Government and Heritage




LOCAL AUTHORITY  
Climate Action  
Training Programme



Local Authority  
**Waters** Programme  
vibrant communities | catchment assessment | healthy waters

**CCMA**  
Cumann Luath-Bairistreacha Contae agus Cathrach  
County and City Management Association

**epa** Environmental Protection Agency  
An Ghníomhaireacht um Chaomhú Comhshaoil

Environment Protection Division	Circular Economy - Strategic Policy	Circular Economy – Materials Management
<p><b>FRANK GALLAGHER</b> Principal</p>  <p><b>Waste Management and Enforcement Policy</b></p> <p><b>Landfill Remediation Programme</b></p> <p><b>Circular Economy Fund</b></p> <p><b>Management of environmental noise</b></p> <p><b>Radiation Policy and Protection</b></p>	<p><b>VACANCY</b></p> <p><b>Whole-of-Government Circular Economy Strategy</b></p> <p><b>Green Public Procurement</b></p> <p><b>Circular Construction Roadmap</b></p> <p><b>Circular Innovation and oversight of Circuleire, the national circular manufacturing platform</b></p> <p><b>Innovation Grants Scheme</b></p> <p><b>Strategic Communications Dev.</b></p>	<p><b>BERNIE KIELY</b></p>  <p><b>Producer Responsibility: packaging, tyres, end-of-life vehicles, farm plastics, Batteries, Waste Electrical and Electronic, and tobacco products.</b></p> <p><b>Textiles</b></p> <p><b>Plastics, incl. SUPs, Deposit Return Scheme and levies: plastic bag and disposable cup.</b></p> <p><b>End-of-Waste and By-Products</b></p>



## Circular Economy – DECC’s Partners:

---

- **Local Government Sector** (CCMA/LGMA: CATCEN); RWMPOs and WERLAs, NTFSO, NWCPO.
  - 1<sup>st</sup> National Waste Management Plan
  - Enforcement
  - Communications – MyWaste.ie
  - Waste Permitting
- **EPA:** Circular Economy Programme (LAPN),
  - Licensing, Enforcement, End of Waste/By-Products,
  - Statistics, Communications - (Annual CE Conference 27 Sept)



## Measures of Circularity – moving beyond Recycling

- EU targets on Reuse: Reporting only. No targets. NWMP proposes a pathway for target setting.
- EU targets on Recycling: Household waste, Packaging, WEEE, ELVs, Batteries, BMW to landfill.
- Circularity Rate.
  - 2021: Netherlands (33.8 %), Belgium (20.5 %) France (19.8 %). Ireland and Finland (2 %) Romania (1.4)
- New EU targets 2025/2030; New national reuse targets in CE Strategy V2; new targets in NWMP.
- New EU regulations and directives in negotiation – Packaging, ELVs, Textiles, Sustainable Products, Green Claims.



## Levers for Change:

---

- **Policy measures:** CE Strategy, CE Act 2022, Green Public Procurement, Communications.
- **Regulatory measures:** National EoW and By-Product Decisions, Brown Bin rollout extension, Commercial Waste Segregation
- **Fiscal measures:** Levies – plastic bag, landfill levy, recovery levy, hot beverage cups, Deposit Return 2024
- **Supports** – Anti-Dumping Initiatives, Landfill Remediation, Enforcement, Litter.
- **Infrastructure** – developing Centres of Excellence in Education, Manufacturing.



# National Food Waste Prevention Roadmap

Actions to reduce food waste by 50 per cent by 2030.

- Includes rolling out food waste recycling awareness initiatives.
- Local Authority sector: Regional Waste Management Planning Offices campaigns about recycling food waste:
  - ❑ National Food Waste Recycling Week, and
  - ❑ providing kitchen food waste caddies and caddy liners
  - ❑ Advice about separating our food waste, and why.
- New legislation will require waste collectors to provide every household with a bio-waste collection service by end year.





## Green Public Procurement (GPP)

---

*sourcing goods, services or works with a reduced environmental impact.*

- A new GPP Strategy and Action Plan will focus on measures to progress GPP Implementation across the Public Sector.
- The 2021 EPA GPP Guidance for the Public Sector includes criteria for 10 product and service groups.
- EPA is seeking feedback re. current guidance/criteria by 29th Sept (<https://www.epa.ie/our-services/monitoring--assessment/circular-economy/green-public-procurement/>).
- GPP Criteria Search, online search tool for rapid find, relevant GPP criteria. <https://gppcriteria.gov.ie/>.





An Roinn Comhshaol,  
Aeráide agus Comarsáide  
Department of the Environment,  
Climate and Communications



An Roinn Tithíochta,  
Rialais Áitiúil agus Oidhreacht  
Department of Housing,  
Local Government and Heritage



LOCAL AUTHORITY  
Climate Action  
Training Programme



Local Authority  
Waters Programme  
vibrant communities | catchment assessment | healthy waters

CCMA  
Cumann Lucht Bannáilochta Contae agus Cathrach  
County and City Management Association

epa  
Environmental Protection Agency  
An Ghníomhaireacht um Chaomhú Comhshaol

## Litter and Dumping Grants by DECC

Anti-Litter & Anti-Graffiti Awareness Grants: 70% of costs; €750k fund available; claims by 3 November.

National Litter Pollution Monitoring System: 2023 survey – new items counted Vape litter, face masks, Single Use plastics and packaging. 2022 report to be published soon.

An Taisce-National Spring Clean: €225pa grant aid. In 2022, over 5,600 groups registered and collected nearly 3k tonnes of litter.

An Taisce-Irish Business Against Litter: 2023 - €40k in support.

An online Anti-Dumping Toolkit has been established on [mywaste.ie](https://mywaste.ie)

€3m p.a. for Anti-Dumping Initiative since 2019.

**YOUR  
COUNTRY.  
YOUR  
WASTE?**

Illegal dumping  
is costly. It threatens  
our environment.  
Let's all take  
responsibility.





# Local Authority Waste Enforcement Grant Scheme

- Since 2002 - €125m to support LG staff enforcing waste laws.
- Nearly €8m funding support in 2022 and 2023.
- €1m in 2023 enhancement of WERLAs
  - incl. new Waste Programme Co-ordinator role.





Rialtas na hÉireann  
Government of Ireland

## Update on the use of CCTV to tackle littering and illegal dumping



### What is the current situation?

To address data protection concerns, the CE Act 2023 sets out a number of conditions to be complied with prior to the introduction and use of CCTV by local authorities.

### What are the legal requirements ?

The CE Act 2022 requires LGMA prepare and submit draft codes of practice to the Minister for approval.



### Why is this required?

This is required to set standards for the operation of CCTV and other mobile recording devices.

### Why is the process not complete?

Codes of Practice and Data Protection Impact Assessments (DPIA) are complex and require consultation with the Minister, the Minister HLGH and Minister Justice and the Data Protection Commission.

### What happens next?

Draft Codes of Practice and DPIAs have been circulated and once the consultation process is complete, the LGMA may submit to the Minister for approval. A circular will include details of how to begin using CCTV.



## 2024: Measures Planned

---

- Deposit Return Scheme – February 2024
- 2<sup>nd</sup> Circular Economy Strategy
- Construction Sector Roadmap
- CE Innovation Grant Scheme
- National Enforcement Priorities 2024 plus litter and Anti-Dumping supports
- Commitments re. Food Waste Prevention Roadmap, plastics EPRs on Wet Wipes, Fishing Gear, Landfill Remediation, Coffee Cup Levy
- Textiles – separate collection enhancements
- Communications – public, industry, public sector.



An Roinn Comhshaoil,  
Aeráide agus Comarsaíde  
Department of the Environment,  
Climate and Communications



An Roinn Tithíochta,  
Rialais Áitúil agus Oidhreacht  
Department of Housing,  
Local Government and Heritage



LOCAL AUTHORITY  
Climate Action  
Training Programme



Local Authority  
Waters Programme  
vibrant communities | catchment assessment | healthy waters

CCMA  
Cumann Luath-Banálaithe Contae agus Cathrach  
County and City Management Association

epa  
Environmental Protection Agency  
An Ghníomhaireacht um Chaomhú Comhshaoil

---

## Thank You

Questions may be asked through the SLIDO app using the QR code on the rear of your lanyard or go to

Slido.com and enter #2847552



An Roinn Comhshaoil,  
Aeráide agus Comarsáide  
Department of the Environment,  
Climate and Communications



An Roinn Tithíochta,  
Rialais Áitíúil agus Oidhreacht  
Department of Housing,  
Local Government and Heritage



LOCAL AUTHORITY  
Climate Action  
Training Programme



Local Authority  
Waters  
Programme  
vibrant communities | catchment assessment | healthy waters

CCMA  
Cumann Luath-Banálaithe Contae agus Cathrach  
County and City Management Association

epa  
Environmental Protection Agency  
An Ghníomhaireacht um Chaomhú Comhshaoil

---

# LOCAL AUTHORITY ENVIRONMENTAL SERVICES TRAINING GROUP CONFERENCE and EXHIBITION – 2023

National Waste management Plan for A Circular Economy  
Kevin Swift



Rialtas Áitiúil Éireann  
Local Government Ireland

# **DRAFT NATIONAL WASTE MANAGEMENT PLAN FOR A CIRCULAR ECONOMY**

## **LASNTG**

Local Authority Services National Training Group

**ESTG Annual Conference 14<sup>th</sup> September 2023 - Galway**



**REGIONAL**  
**WASTE**  
**MANAGEMENT**  
PLANNING OFFICES





Rialtas na hÉireann  
Government of Ireland

## A Waste Action Plan for a Circular I

Ireland's National  
2020-2025

- Working with the Regional Waste Management Planning Offices and the City and County Management Association we will replace the existing Regional Waste Management Plans with a National Waste Management Plan for a Circular Economy containing targets for:

- Reuse
- Repair
- Resource consumption
- Reducing contamination levels



on

# Major Changes



**DRAFT NATIONAL WASTE  
MANAGEMENT PLAN**  
FOR A CIRCULAR ECONOMY



- **Single National Plan**
- **Circularity**
- **Collaboration/Co-ownership**

# Oversight



# National Oversight Group

Recommendation to CCMA to proceed with statutory consultation

National Waste Management Plan for a Circular Economy - NWMP

## National Oversight Group - NOG Draft Plan - Update January 2023

### 1.0 background

The Waste Management Act 1996 requires each local authority to make a waste management plan and allows two or more authorities to jointly make a plan which must be evaluated once in every 6-year period. The waste management planning regulations 1997 specify the matters to be addressed in the plan. The evaluation of the existing regional waste management plans and the national policy document "A Waste Action Plan for a Circular Economy" recommended the replacement of existing plans with a single National Waste Management Plan for a Circular Economy. The pre-draft consultation process for the new plan commenced in Q1 2021 and the preparation of the draft plan commenced in Q3 2021. The Draft Plan has been developed using a process to encourage co-ownership of the Targets Policies and Actions. In Q2 2022 the CCMA established a Local Authority Sector Oversight Group (NOG) to oversee the development and making of the Plan on behalf of the Local Authorities. The NOG met formally on 12 occasions in 2022 and multiple meetings were held with members throughout this period.

### 2.0 recommendations

At the meeting of the NOG Group on the 31<sup>st</sup> of May 2022 it was agreed that the NOG is required to make two recommendations as part of the oversight process:

- To proceed to public consultation on the draft plan.
- To proceed to make the final plan.

The NOG is required to proceed to public consultation for the Draft Plan, is subject to the following being satisfied:

- That all obligations have been met with regard to the Plan process.
- That all obligations have been met with regard to national policy objectives and that consultation has been undertaken and completed.
- That all obligations made for local authority sectoral commitments to be matched.

### 3.0 draft plan

The criteria for recommendation No.1 The RWMP's have prepared a number of volumes of the plan in a number of volumes as follows:

- Volume I: Current Situation and Challenges
- Volume II: Policy Responses and Actions
- Volume III: Delivery Roadmap
- Volume IV: Supporting Information (Appendices)
- Volume V: Strategic Environmental Assessment and Natura Impact Statement

The RWMP's now invite final high-level feedback from members of the NOG with regards to the Executive Summary and Volumes I, II and III of the Plan by the 3<sup>rd</sup> of February and an excel spreadsheet has been prepared to facilitate this process. Volume IV, Supporting Information, and Volume V SEA/NIS have been provided for members information.

### 4.0 key dates

The following are key dates for the completion of the draft plan process:

- 16<sup>th</sup> January: Issue Final Working Drafts to NOG, Key Partners / Regional Groups
- 9<sup>th</sup> February: NOG Closeout Meeting on Final Working Drafts
- 16<sup>th</sup> February: Recommendation to CCMA to proceed to Public Consultation
- 9<sup>th</sup> March: Launch of the Draft Plan / Public Consultation at the IWMA National Conference

## NATIONAL OVERSIGHT GROUP PROCEEDINGS: 2022

31<sup>ST</sup> MAY  
Overview of Plan Volumes  
Vol II – Detailed summary

14<sup>TH</sup> JUNE  
Vol I – Detailed summary

26<sup>TH</sup> JUNE  
Vol III - Detailed Summary

12<sup>TH</sup> JULY  
SEA/AA Process  
Governance & Organisation  
Appendices

19<sup>TH</sup> JULY  
Q&A Workshop

26<sup>TH</sup> JULY  
Vol II Comments/Feedback  
Executive Summary position

31<sup>ST</sup> AUGUST  
Close out Vol I & II Feedback

29<sup>TH</sup> SEPTEMBER  
Consultation - Primary Outcomes  
Vol III Revised Structure  
Timeline

19<sup>TH</sup> OCTOBER  
Vol I Part C Chp. 9.0 Financial Human  
and Market Resources  
Vol II Part A Core Positions  
Vol III Delivery Part A Feedback, Part B  
Organisation Engagement Resources  
Chp. 7.0 Resources

14<sup>TH</sup> NOVEMBER  
Vol II Revisited  
Vol III Key Deliverables  
Executive Summary – Construction &  
Content  
Timeline

23<sup>RD</sup> NOVEMBER  
Workshop  
1. Business Continuity Deficits  
2. Business Continuity Deficit Mitigation  
3. Circularity Transition Costs

7<sup>TH</sup> DECEMBER  
Plan responses to NOG Chairperson's  
Key Issues

Draft Waste Management Plan

**Old Model**



Engagement with Key Stakeholders

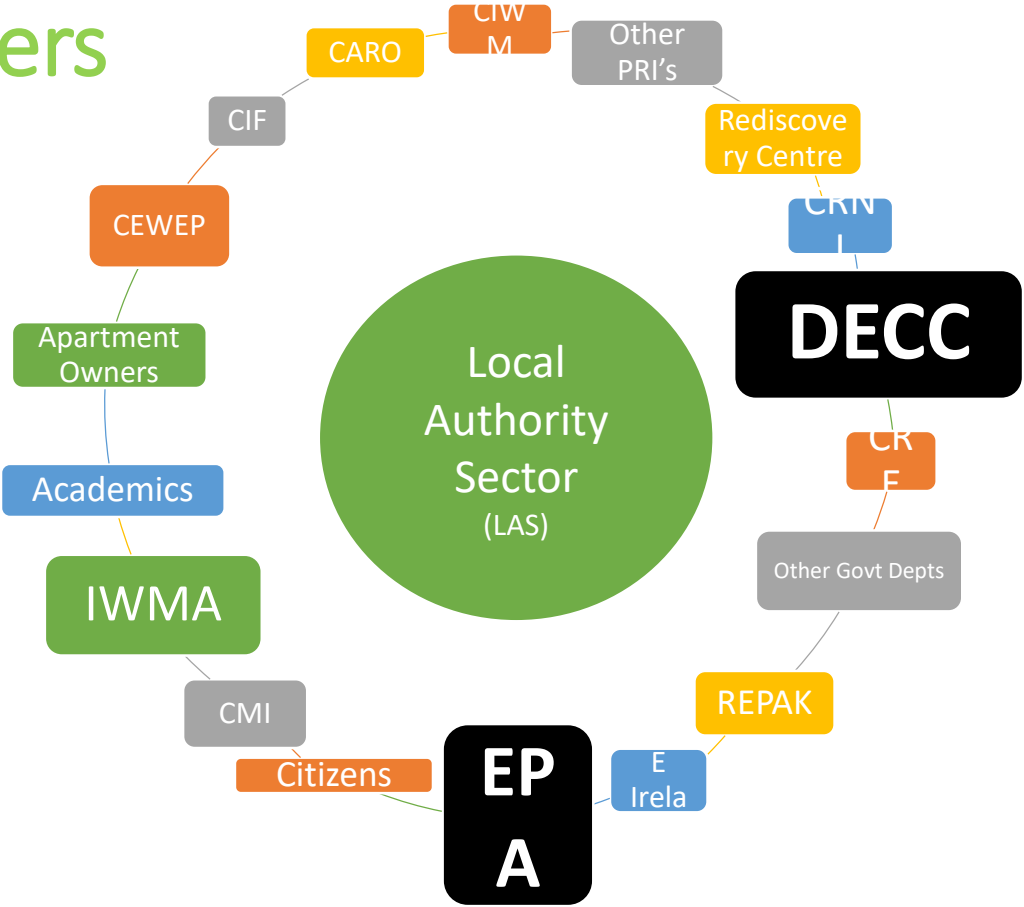
Engagement with Key Stakeholders

**New Model**



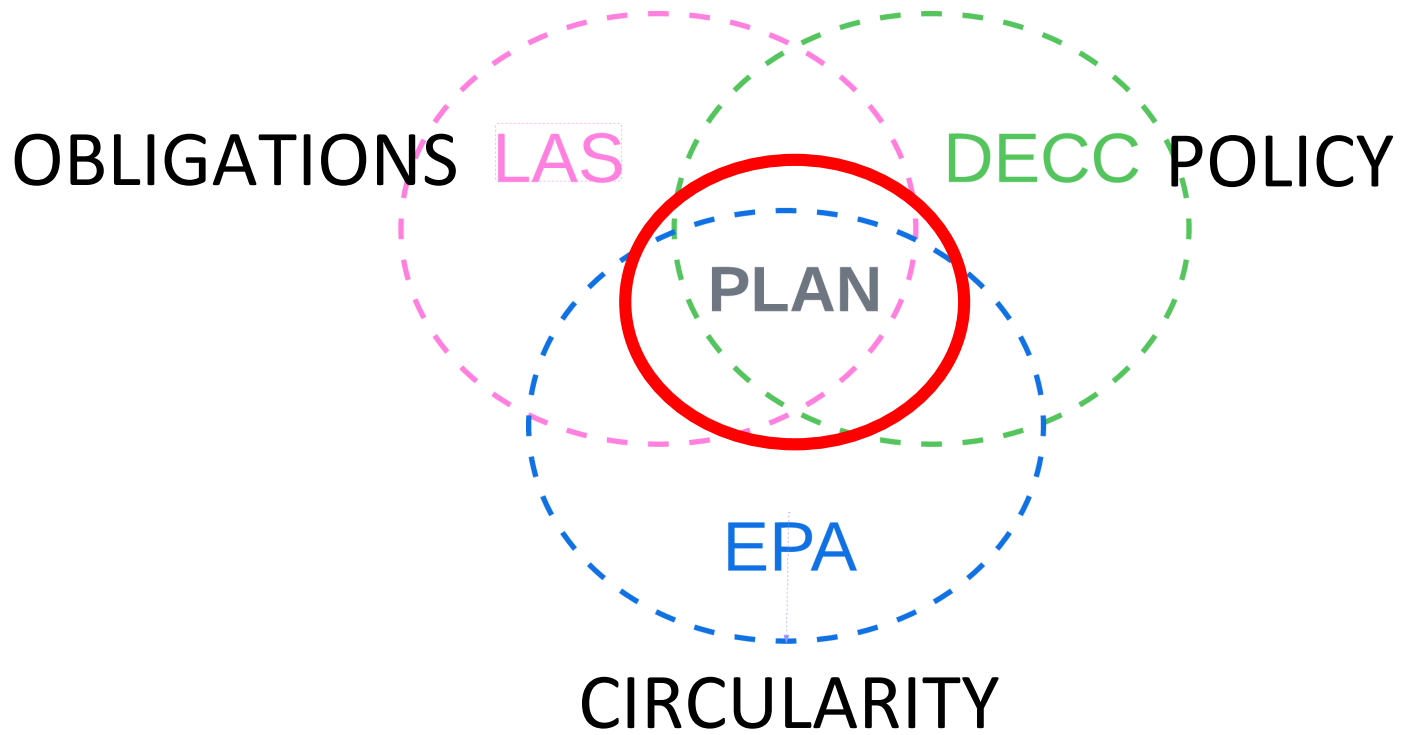
Draft Waste Management Plan

# Stakeholders



# Engagement

- Q4 2019 – Consultations on Evaluation Process
- Q1 2020 – Coordinated CCMA Submission on National Policy
- Q3 2020 – Publication of National Policy
- Q1 2021 – Pre Draft Consultation
- Q2 2021 – Publication of Evaluation
- Q3 2021 – Draft Preparation Commencement
- **Q4 2021 – Stakeholder Workshops** ✓
- Q1 2022 – Local Authority Briefing Sessions
- **Q2 2022 – Local Authority Oversight Process** ✓
- Q4 2022 – Finalisation of Draft Plan
- **Q1 2023 – Approval-Statutory Consultation** ✓
- Q2 2023 – Executive Agreement / Publication





# Major Challenge



# 5 Volumes:

## Executive Summary

**VI**

**VII**

**VIII**

**IV**

**V**

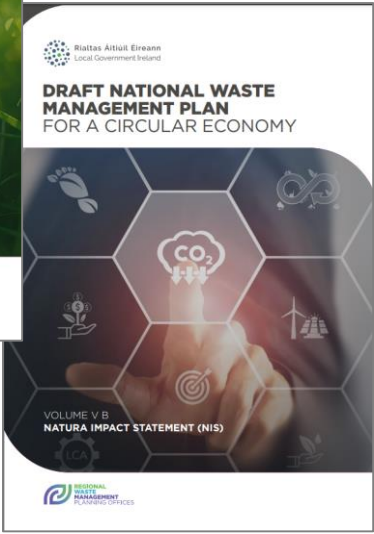
**Current  
Situation and  
Challenges**

**Policy  
Responses and  
Actions**

**Delivery  
Roadmap**

**Supporting  
Documentation**

**SEA/NIS**





**Current  
situation and  
Challenges**

**Rules  
Landscape  
Resources**



**Policy  
Responses and  
Actions**

**Core  
Positions  
Core Policies  
Focus Areas**



**Delivery  
Roadmap**

**Impact  
Organisation  
Implementation**

CLIMATE



CIRCULAR  
ECONOMY

## PLAN AMBITION



**TOTAL WASTE  
GROWTH PER  
PERSON**

**By:**

### **Maintaining**

Waste management and behavioural advances

### **Accelerating**

The transition to a circular economy

### **Influencing**

Sustainable consumption

### **Improving**

The capture of all resources

### **Optimising**

Circularity

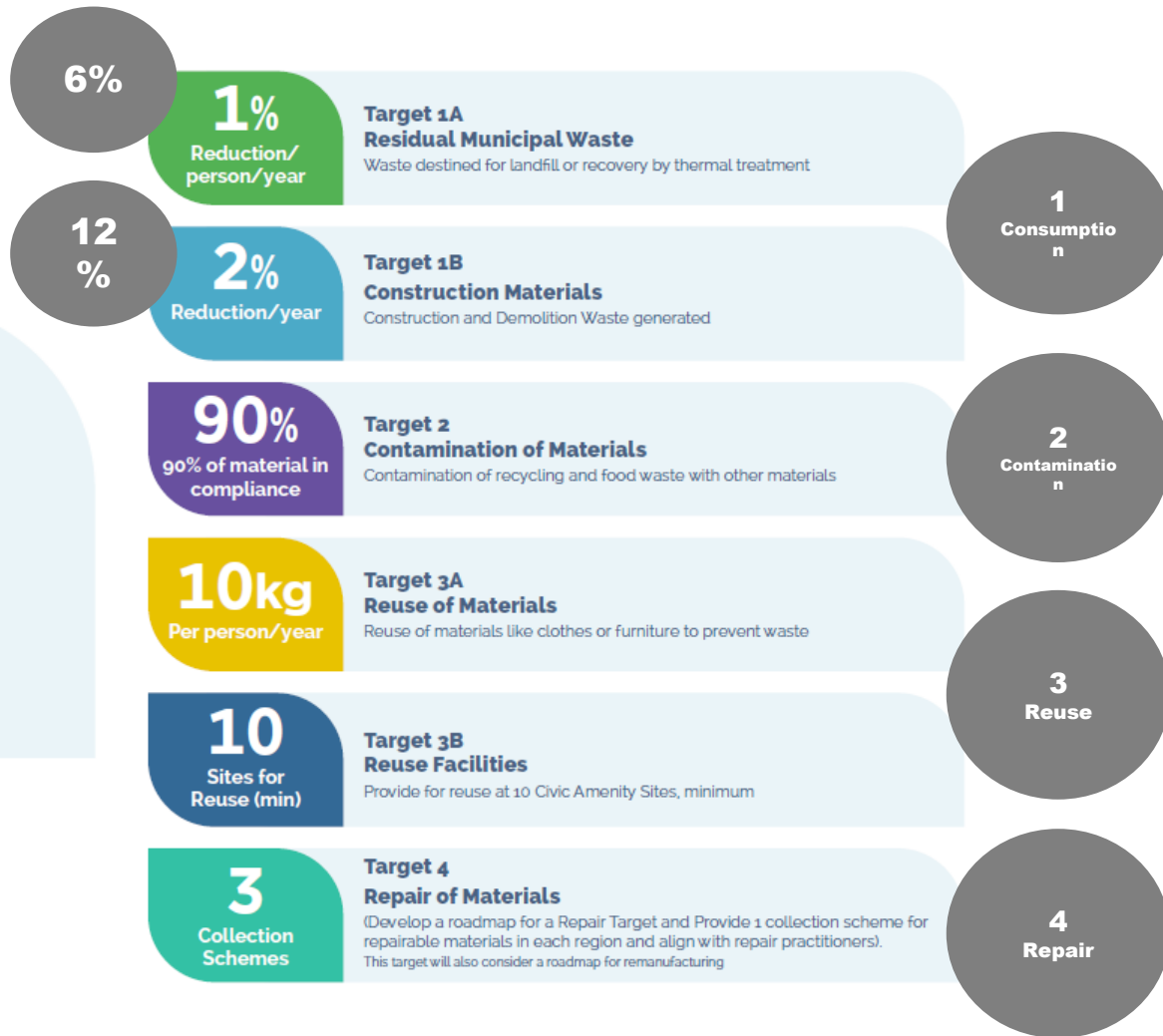
### **Enabling**

Compliance with policy and legislation





# TARGETS



## RECYCLING TARGETS

2020 – 50%  
2025 – 55%  
2030 – 60%  
2035 – 65%

## FOOD WASTE

**50%** 

**REDUCTION BY  
2030**

## PACKAGING TARGETS

By 31st December 2025  
**65% Recycled (by weight)**

Including:  
50% of Plastic  
25% of Wood  
70% of Ferrous Metals  
50% of Aluminium  
70% of Glass  
75% Paper / Card

By 31st December 2030  
**70% Recycled (by weight)**

Including:  
55% of Plastic  
30% of Wood  
80% of Ferrous Metals  
60% of Aluminium  
75% of Glass  
85% Paper / Card

## BATTERIES TARGETS

Minimum 45% collection rate  
2016

65% Recycling of Lead Acid  
Batteries and Accumulators.

75% Recycling of Nickel  
Cadmium Batteries and  
Accumulators

50% Recycling of other waste  
batteries

## SUP TARGETS

From 2025

PET Bottles must contain at least  
25% recycled plastic

From 2030

Beverage Bottles must contain 30%  
recycled plastic

By 2025

77% separate collection of SUP  
beverage bottles by weight

By 2029

90% separate collection of SUP  
beverage bottles by weight



## CONSTRUCTION WASTE

**70%**  
**RECYCLING BY  
2020**

## WEEE TARGETS

From 2019

Minimum collection rate of 65% OR 85% of  
WEEE generated in the state.

From 2018

Minimum targets by category:

**Cat. 1 or 4 Annex III**

85% Recovered 80% Prepared for Reuse or  
Recycled

**Cat. 2 Annex III**

80% Recovered 70% Prepared for Reuse or  
Recycled

**Cat. 5 or 6 Annex III**

70% Recovered 55% Prepared for Reuse or  
Recycled

**Cat. 3 Annex III**

80% Recycled



## LANDFILL

**<10%**  
**OF TOTAL MSW  
BY 2035**

## ELV TARGETS

Minimum 95% Reuse and  
Recovery

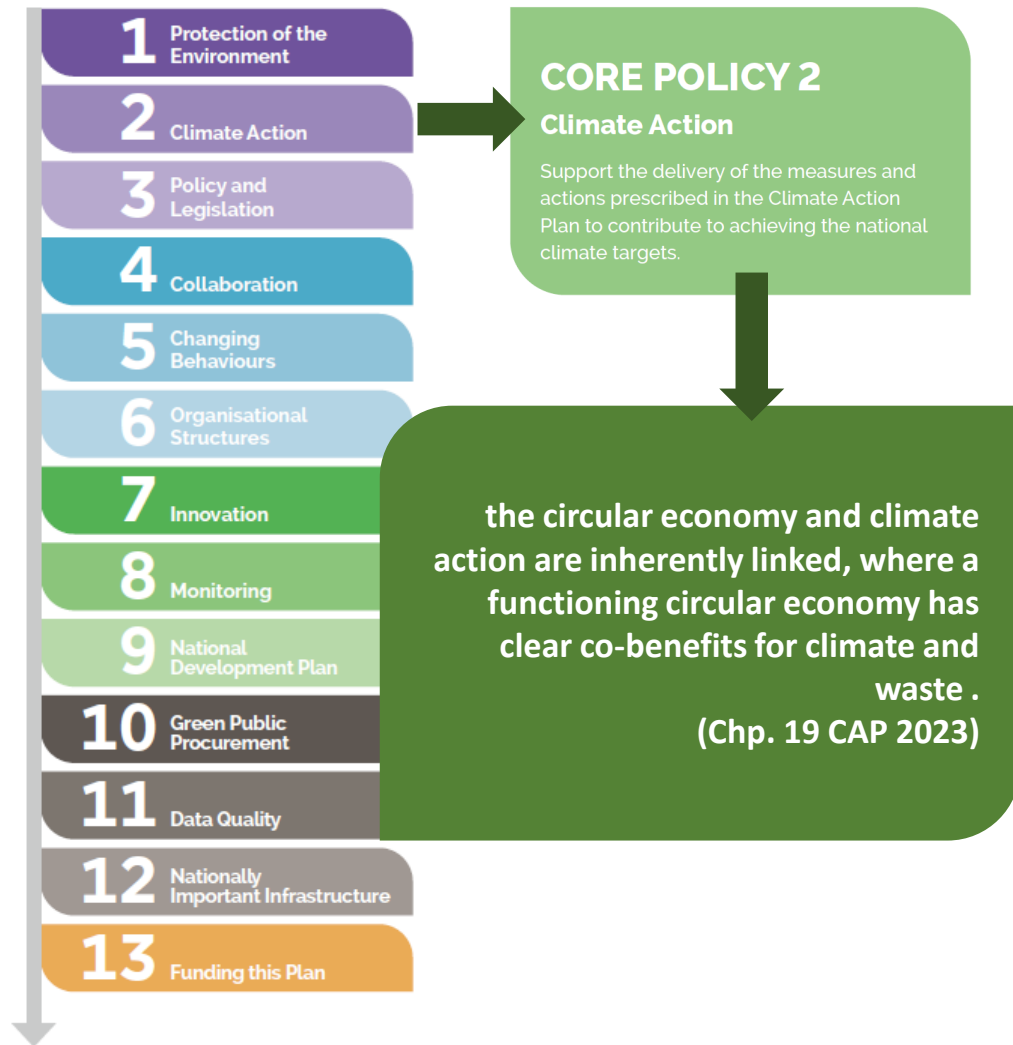
Minimum 85% Reuse and  
Recycling

European Targets represent Core  
Positions in this Plan and will be  
achieved by the implementation of  
policies and actions identified.





# CORE POLICIES



DELIVERING  
EFFECTIVE

CLIMATE

A

Local authority  
strategy for

on the **Climate Action  
Charter** and **Climate  
Action Plan**

20  
20

5.4 Undertake a circular economy strategy, based on analysis of the local priority sectors, material flows and waste streams, e.g. municipal and industrial material flows, waste generation and explore the options for circular procurement

## Strategic Goal 5:

**Mobilise climate action in enterprise and support transition to an inclusive, net zero and circular economy**

This goal will ensure that local authorities lead in the development of inclusive, zero carbon and circular economies where local enterprises can benefit from playing an active role in decarbonisation and adapting to the changing climate.

This strategic goal will deliver on commitments L and R of the Local Authority Climate Action Charter.

### Key objectives:

- 5.1 Embed climate change and the circular economy in implementation of all local economic development strategies and Local Economic and Community Plans
- 5.2 Promote the development of a thriving green economy in which enterprises are supported to take advantage of emerging green business opportunities
- 5.3 Promote climate action and green skills in training and education in partnership with Education and Training Boards (ETBs) and Local Enterprise Offices (LEOs)
- 5.4 Undertake a circular economy strategy, based on analysis of the local priority sectors, material flows and waste streams, e.g. municipal and industrial material flows, waste generation and explore the options for circular procurement
- 5.5 Support the growth and development of lower carbon enterprises through supplier development programmes that align with green procurement strategies
- 5.6 Utilise best practice in promoting economic opportunities that arise from climate action with local enterprise.



**FOCUS AREA GROUPS**

**X16**

**OPERATIONAL**

**X4**

**MATERIAL  
STREAMS**

**X6**

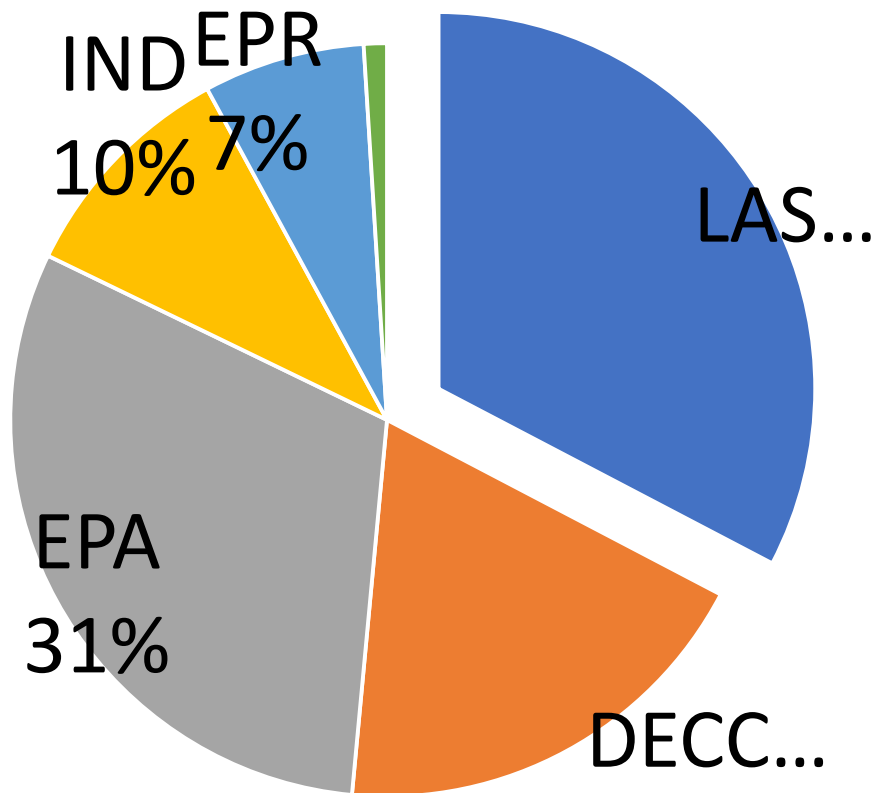
**INFRASTRUCTURE**

**X6**

# Focus Area Fact Sheets

FOCUS AREA 1		MUNICIPAL COMMERCIAL WASTE
<b>Purpose</b>		<b>What is it?</b>
Promote prevention and better segregation of commercial waste.		Municipal commercial waste is mixed waste which is similar in nature and composition to waste from households and includes food waste.
<b>Targeted Policies</b>		<b>Priority Actions (Responsibility)</b>
<b>TP1.1</b>		<b>PA1.1 (LAS)</b>
Identify and promote new means, methods and key drivers of sustainable consumption practices to reduce waste generation.		Develop and deliver targeted awareness campaigns and projects to improve behaviours on prevention, reuse and repair in non household settings.
<b>TP1.2</b>		<b>PA1.2 (LAS)</b>
Ensure that all non-household municipal waste settings adopt best practice on waste segregation and are serviced with a segregated waste collection system to maximise the quantity and quality of materials collected.		Enhance the capture of data from waste collectors for non-household settings through the National Waste Collection Permit Office.
<b>TP1.3</b>		<b>PA1.3 (LAS/Ind.)</b>
Strengthen the monitoring and accurate measurement of non-household municipal waste flows.		Investigate the potential for a sustainable waste management assurance scheme for business consistent with the transition to a circular economy.
<b>TP1.4</b>		<b>PA1.4 (LAS)</b>
Implement appropriate engagement and /or enforcement measures in response to non-compliances identified.		Engage with businesses through local authority structures to promote consistent practices with regard to the management of commercial waste using measures including the MyWaste.ie business tools.
<b>TP1.5</b>		<b>PA1.5 (LAS)</b>
Promote the consistent application of an appropriate incentivised charging system for non-household municipal waste, through awareness and enforcement.		Ensure the consistent and targeted application of waste storage and presentation bye-laws to improve participation and segregation practices and incorporate into the RMCEI process.

**83**  
Priority  
Actions





**Current  
situation and  
Challenges**

**Rules  
Landscape  
Resources**



**Policy  
Responses and  
Actions**

**Core  
Positions  
Core Policies  
Focus Areas**



**Delivery  
Roadmap**

**Impact  
Organisation  
Implementation**

# PREAMBLE

This is **Volume III** of the National Waste Plan for a Circular Economy and sets out the requirements from key partners and stakeholders to achieve the ambition, targets, policies and actions presented in **Volume II** together with key deliverables required to enable policies and actions.

**KEY DELIVERABLES**

# Internal Organisation

## KEY DELIVERABLE 22

Local Authority Waste Programme  
Coordinating Group (LAWPCG)

The LAS will establish a Waste Programme Coordinating Group to coordinate the response of the sector to existing and future challenges.

## KEY DELIVERABLE 23

OP1

Planning, Circularity and Infrastructure

The LAS will establish Organisational Pillar 1 (OP1) Planning, Circularity and Infrastructure to respond to the challenge of the transition to a circular economy.

## KEY DELIVERABLE 24

OP2

Regulation and Enforcement

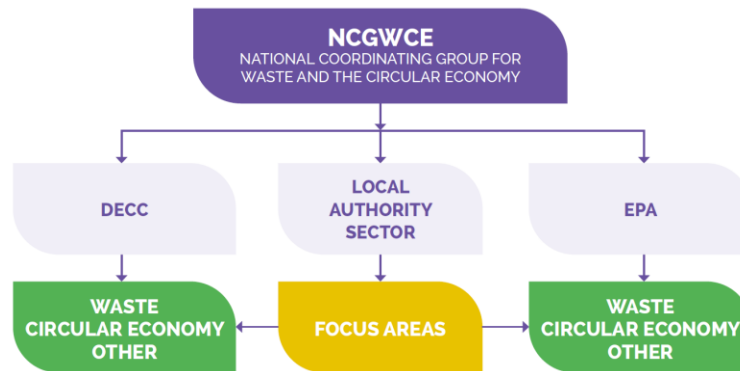
The LAS will establish Organisational Pillar 2 (OP2) Regulation and Enforcement to consolidate and align waste compliance activities.



# External Organisation

## KEY DELIVERABLE 25 National Coordinating Group for Waste and the Circular Economy

DECC, LAS and EPA will collectively establish the NCGWCE to agree and align work plans, priorities, and supports to maintain the continuity of activities and accelerate the transition to a circular economy.



# Circularity Costs

## KEY DELIVERABLE 35

Communications Strategy - Implementation

It is anticipated that an additional €1M will be required annually from government to implement the Circular Economy Communications Strategy.

## KEY DELIVERABLE 37

Local Circularity Resources

The LAS will facilitate the provision of local circularity resource/s to enhance circularity engagement across the sector and with key stakeholders subject to support from government.

## KEY DELIVERABLE 39

Public Investment

The LAS is committed to facilitating reuse and circularity through the CA site network however significant support will be required from government to achieve this outcome.

## KEY DELIVERABLE 36

Regional Circularity Resource

The LAS will facilitate the provision of a regional circularity resource/s to coordinate the implementation of the communications strategy and enhance circularity engagement across the sector and with key stakeholders subject to support from government.

## KEY DELIVERABLE 38

Regulation

Additional Investment in the NWCPO will be required from government to deliver incentivised charging for non-household activities.

# Cost Distribution



**VI**

**Current  
Situation and  
Challenges**

**VII**

**Policy  
Responses and  
Actions**

**VIII**

**Delivery  
Roadmap**

**IV**

**Supporting  
Documentation**

**VV**

**SEA/NIS**

# Guidance for Siting Waste Management Facilities



## APPENDIX A - FACILITY SITING SETBACK AND LOCATION DISTANCES

This appendix provides guidance on distances to permanent residential properties<sup>13</sup>, businesses and access to national roads when siting new waste management facilities. The distances guide the siting of activities balancing economic development considerations alongside planning, environmental and community concerns. Mitigation measures, which reduce potential nuisances to acceptable levels, can reduce the guidance setback distances if implemented appropriately.

The suitability of lands for the development of each waste activity is described in Table A-1. The land classification options include urban, rural or industrial. A traffic light system is applied to indicate the suitability of the lands as follows:

- Location is favourable for this facility type;
- Location requires consideration for this facility type; and
- Location may be a significant obstacle for this facility type;

Table A-1 Waste Management Facilities Guidance Distances and Suitable Land Locations

Waste Facility Type	Guidance Setback Distances Between Principal Processing Area <sup>14</sup> of the Facility and Residential Property	Guidance Setback Distances Between Principal Processing Area of the Facility and Business/Industry	Guidance Distance from National Road Network <sup>15</sup>	Urban	Rural	Industrial
Bring Facilities (Bring Banks and PTUs)	Setback distances between bring facilities and residential properties are not specified. Potential nuisances (refer to 3.1) are to be considered when siting bring facilities and managed appropriately.	Setback distances between bring facilities and businesses are not specified. Potential nuisances (refer to Section 3.1) are to be considered when siting bring facilities and managed appropriately.	Bring facilities should be accessible to the public by foot and not necessarily require people to drive to use them. The locations must also facilitate safe vehicular access for servicing and recycling of materials.	●	●	●

<sup>13</sup> A residential property includes a private household, school, creche or healthcare facility with setback distances related to the nearest point of the building curtilage. For clarity a private household comprises either one person living alone or a group of people living at the same address with common housekeeping arrangements – that is sharing at least one meal a day or sharing a living room or sitting room.

<sup>14</sup> The Principal Processing (or treatment) Area is the location of the primary waste activity within the boundary of the proposed site

<sup>15</sup> National road network means Motorways and National roads. Exceptions to this distance guideline may be permitted if it can be demonstrated that there will be minimal adverse impact on local communities over the life time of the facility and the access road is found to be of suitable quality following a Traffic Impact Assessment (TIA).

## THIS PLAN IN NUMBERS:

**1**

Plan  
Ambition

**6**

National  
Targets

**13**

Core  
Policies

**16**

Focus  
Areas

**73**

Targeted  
Policies

**83**

Priority  
Actions

**51**

Key  
Deliverables



## Make a submission

full name \*

start typing

address

start typing

email \*

start typing

your message \*

start typing

send message →

# Internal Engagement:

- **All Local Authorities**
- **SPC's**
- **Special Workshops**
- **SMT's**
- **Full Councils**
- **Steering / Operational Groups**

**Lead Authority CE's**



# Feedback:

## Packaging:

- **Deposit- Return Scheme**
- **Reducing packaging at supermarkets-**
- **Producers reducing packaging at design stage**
- **What is eco-modulation**

# Feedback:

## **Municipal Waste:**

- **RE-Mixing of segregated bins**
- **Waste Charges concern at recent increases**
- **Address areas of low service provision-increase participation rate**
- **Re-Municipalisation**
- **Export where are we exporting residual and recycling**

# Feedback:

## Illegal Dumping:

- **Concern about illegal dumping of:**
  - WEEE**
  - Bulky**
  - C&D Materials.. Windows/Toilets/Doors**
- **The need for bulky collection**
- **Accelerate the introduction of CCTV**

# Feedback:

## Other Waste:

- **Agricultural Chemicals disposal Options**
- **Farm Film Plastics concern regarding overstocked storage sites**
- **Textile Waste & Fast Fashion**
- **Disposal of Medicines**

# Feedback:

## **Local Authority Waste Issues:**

- **Provision of services at local authority housing**
- **Availability of Local level data**
- **Lack of understanding of the enforcement powers of local authorities**
- **Support for Reuse Enterprises**

# Feedback:

## Other:

- **Green Washing**
- **More clarity on operations of EPRs**
- **Mica / Pyrite Waste Impacts**

# External

## Engagement:

- **The Irish Waste Management Conference**
- **National Communications Group**
- **International Circular Economy Hotspot**
- **ACR+ International Event**
- **3 x Regional Planning Assemblies**
- **Cre Members**
- **EPA, Circular Economy Team**
- **CARO**
- **ESTG**

# Peer Review:



## About Us

---

ACR+ is an international network of cities and regions sharing the aim of promoting a sustainable resource management and accelerating the transition towards a circular economy on their territories and beyond.

A campaign graphic enclosed in a green rectangular border. On the left, there is a green gear icon with a circular arrow inside, containing the text '-25% BY 2025'. To the right of the gear, the text 'MORE CIRCULARITY' and 'LESS CARBON' is written in large, bold, blue, sans-serif capital letters. Below this text, the phrase 'Discover our campaign' is written in a smaller, green, sans-serif font. On the far right, there is a green line-art silhouette of a city skyline.



# Oversight



Cumann Lucht Bainistíochta Contae agus Cathrach  
County and City Management Association

## National Oversight Group

- Governance
- Independent Review of Waste Shared Services
- NWMP organisational arrangements
- IPA Review of EPA arrangements

# Implementation



**Regional  
Steering  
Group**

- National Work Planning
- Regional Work Planning
- Local Work Planning

# Process:



2 month Statutory Consultation Period  
May 3<sup>rd</sup> – July 5<sup>th</sup>

Direct engagement with regional and local media, print/radio, to encourage participation in the consultation stage

Direct engagement with SPC's/full Councils as required.

Consider submissions and prepare report  
July/August

Consideration by NOG - Sept  
Recommendation to CCMA - Oct  
Recommendation to Chief Executives by Directors - Oct/Nov

FINAL PLAN  
Q4





Rialtas Áitiúil Éireann  
Local Government Ireland

# **DRAFT NATIONAL WASTE MANAGEMENT PLAN FOR A CIRCULAR ECONOMY**

## **LASNTG**

Local Authority Services National Training Group

**ESTG Annual Conference 14<sup>th</sup> September 2023 - Galway**



An Roinn Comhshaoil,  
Aeráide agus Comarsáide  
Department of the Environment,  
Climate and Communications



An Roinn Tithíochta,  
Rialais Áitúil agus Oidhreacht  
Department of Housing,  
Local Government and Heritage



LOCAL AUTHORITY  
Climate Action  
Training Programme



Local Authority  
Waters  
Programme  
vibrant communities | catchment assessment | healthy waters

CCMA  
Cumann Luath-Banailíochta Contae agus Cathrach  
County and City Management Association

epa  
Environmental Protection Agency  
An Ghníomhaireacht um Chaomhú Comhshaoil

## Thank You

Questions may be asked through the SLIDO app using the QR code on the rear of your lanyard or go to

Slido.com and enter #2847552



An Roinn Comhshaoil,  
Aeráide agus Cumarsáide  
Department of the Environment,  
Climate and Communications



An Roinn Tíreochta,  
Rialtais Áitiúil agus Oidhreachta  
Department of Housing,  
Local Government and Heritage



LOCAL AUTHORITY  
Climate Action  
Training Programme



Local Authority  
Waters  
Programme  
About Communities | Land-based Assessment | Safety Services

CCMA  
County and City Management Association

epa  
Environmental Protection Agency  
An Aireacht um Chaomnú agus Cleasachas

# ESTG Annual Conference 2023

## 14<sup>th</sup> September

### Session 4- Air Quality

**Chair Catherine McConnell, Mayo County Council**

1<sup>st</sup> Greenhouse gas emissions statistics

2. Closing Address with Bernie Kiely

Join the Q&A session at Slido.com



For more information on this conference please contact the Local Authority Services National Training Group.

T: 052 616 6260E: [lasntg@tipperarycoco.ie](mailto:lasntg@tipperarycoco.ie) | W: [www.lasntg.ie](http://www.lasntg.ie)

