



Comhshaol, Pobal agus Rialtas Áitiúil
Environment, Community and Local Government

Environmental Services Training Group

LOCAL AUTHORITY ENVIRONMENT CONFERENCE
2017

Protecting the Environment for Future
Generations

Minella Hotel, Clonmel Wednesday 24th. May 2017.

Protecting the Environment for Future Generations

Guidance for the Management of Household Hazardous Waste at CA Sites

Celine Horner
Scientific Officer



Comhshaoil, Pobal agus Rialtas Áitiúil
Environment, Community and Local Government

Household Hazardous Waste



....network of local drop-off facilities for householders and small businesses to tackle the problem of “unreported” hazardous waste.

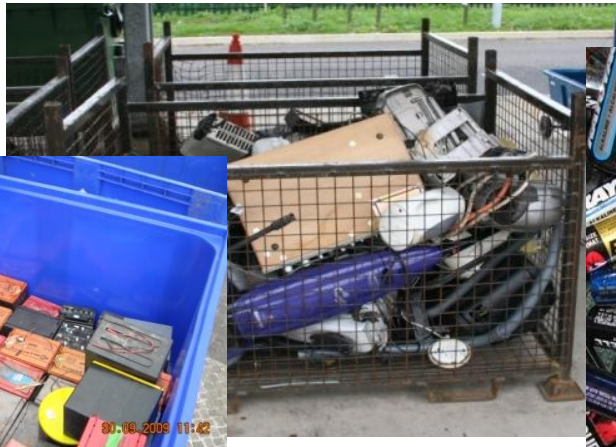
....guidance on the operational and environmental standards for accepting hazardous waste at civic amenity sites

Advisory Committee & Consultation

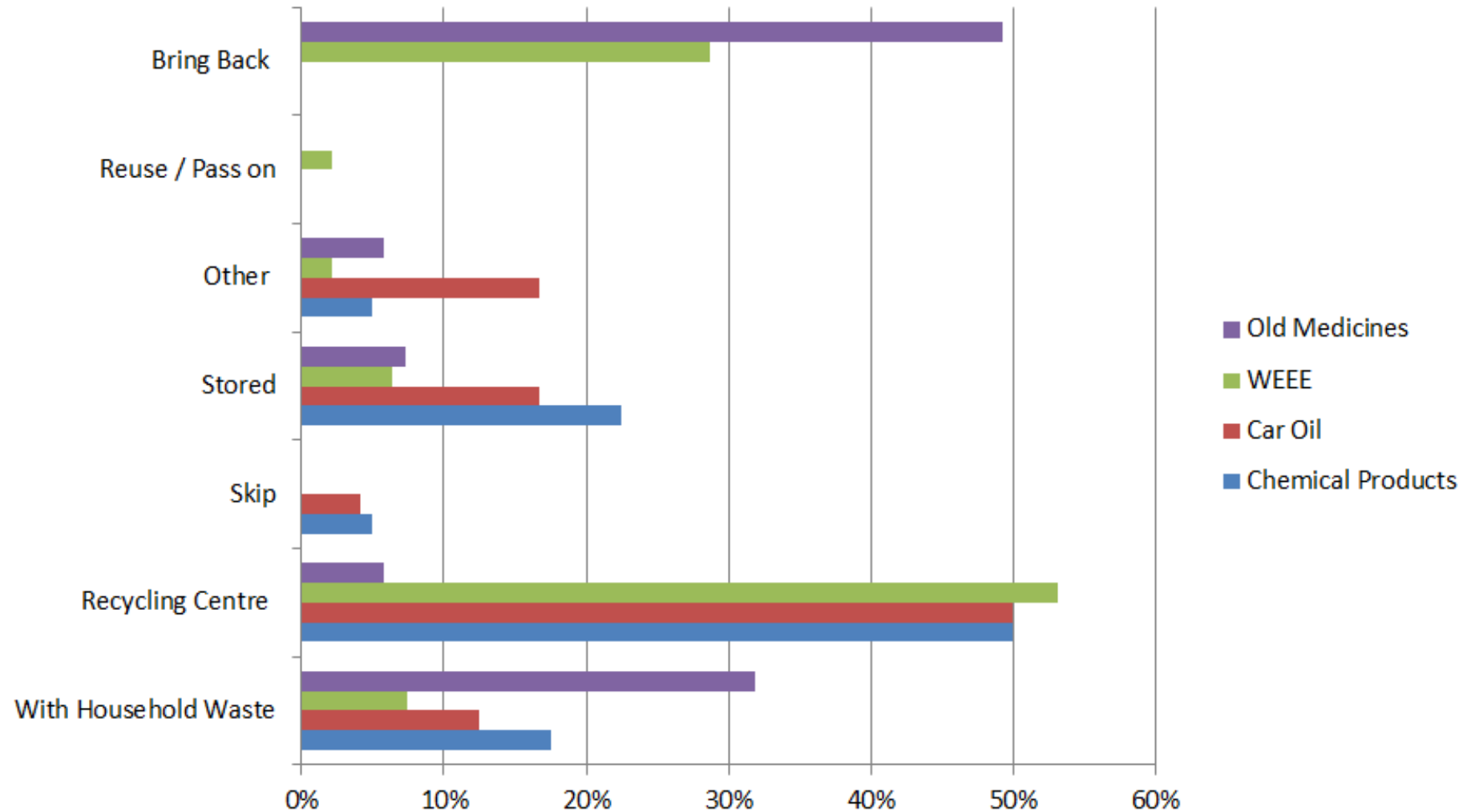
- ❑ EPA
- ❑ HSA
- ❑ Cork Co Co
- ❑ Southern Waste Region
- ❑ DCCAE
- ❑ Fingal Co.Co.
- ❑ Thorntons
- ❑ Irish Waste Management Association
- ❑ Local Authority Safety Officers Group
- ❑ LASNTG
- ❑ CIWM

Household Hazardous Waste

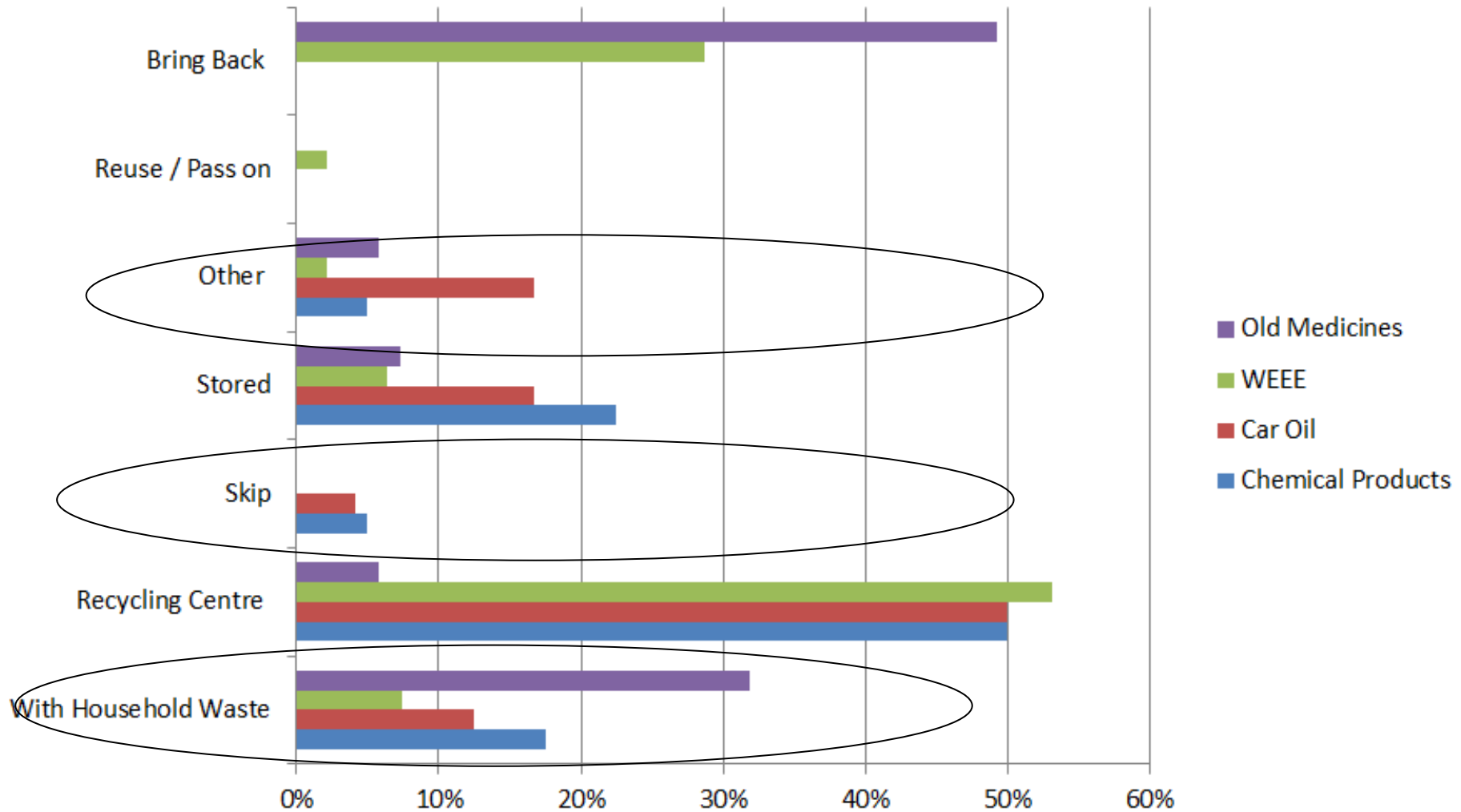




What is main method of disposal..?

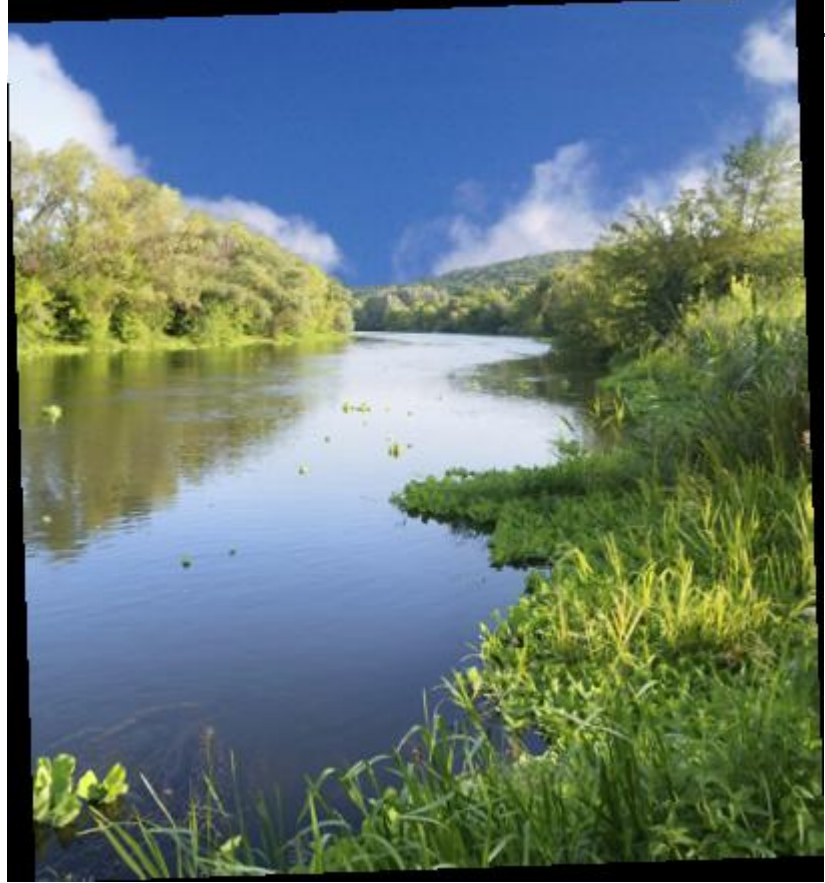


What is main method of disposal..?





- ❑ 30,000t “unreported”



Overview

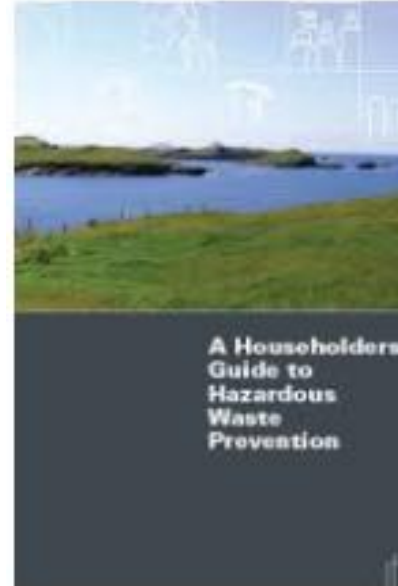
1. Guidelines for Specific Hazardous Wastes
2. Planning for HHW at CA Sites
3. Managing Safety
4. Processing HHW

Exemplars - Attachments

- Risk Assessment
- Emergency Response Procedure
- Procedures for Accident and Incident Reporting

Prevention

- ❑ Preventing Hazardous Waste
- ❑ Communication & Awareness



1.Guidelines for Specific Wastes

- Aerosol Cans
- Asbestos (non friable)
- Batteries (Automotive)
- Batteries (Dry Cell)
- Fire Extinguishers
- Gas Cylinders
- Household Farm and Garden Chemicals
- Motoring Products
- Oils and Oil Filters
- Paints and DIY Products
- Smoke Alarms
- Vegetable Oil

- Waste Electrical and Electronic Equipment (WEEE)
- WEEE Fluorescent tubes and Compact Fluorescent Lights (CFL) bulbs
- WEEE Fridges /Freezers
- WEEE Large household appliances
- WEEE Mixed Small Household Appliances
- WEEE Televisions & Monitors

1. Guidelines for Specific Wastes

- ❑ LoW Code
- ❑ Description
- ❑ Associated hazards
- ❑ Control Measures Required
- ❑ ADR Hazard Class



2. Planning for HHW at CA Sites

- ❑ Waste Acceptance Policy
- ❑ Communication Plan
- ❑ Staff Training

- ❑ Separation Distance
- ❑ Site Layout

Separation Distance by Waste Type

Table 3: Separation Distances by Waste Type

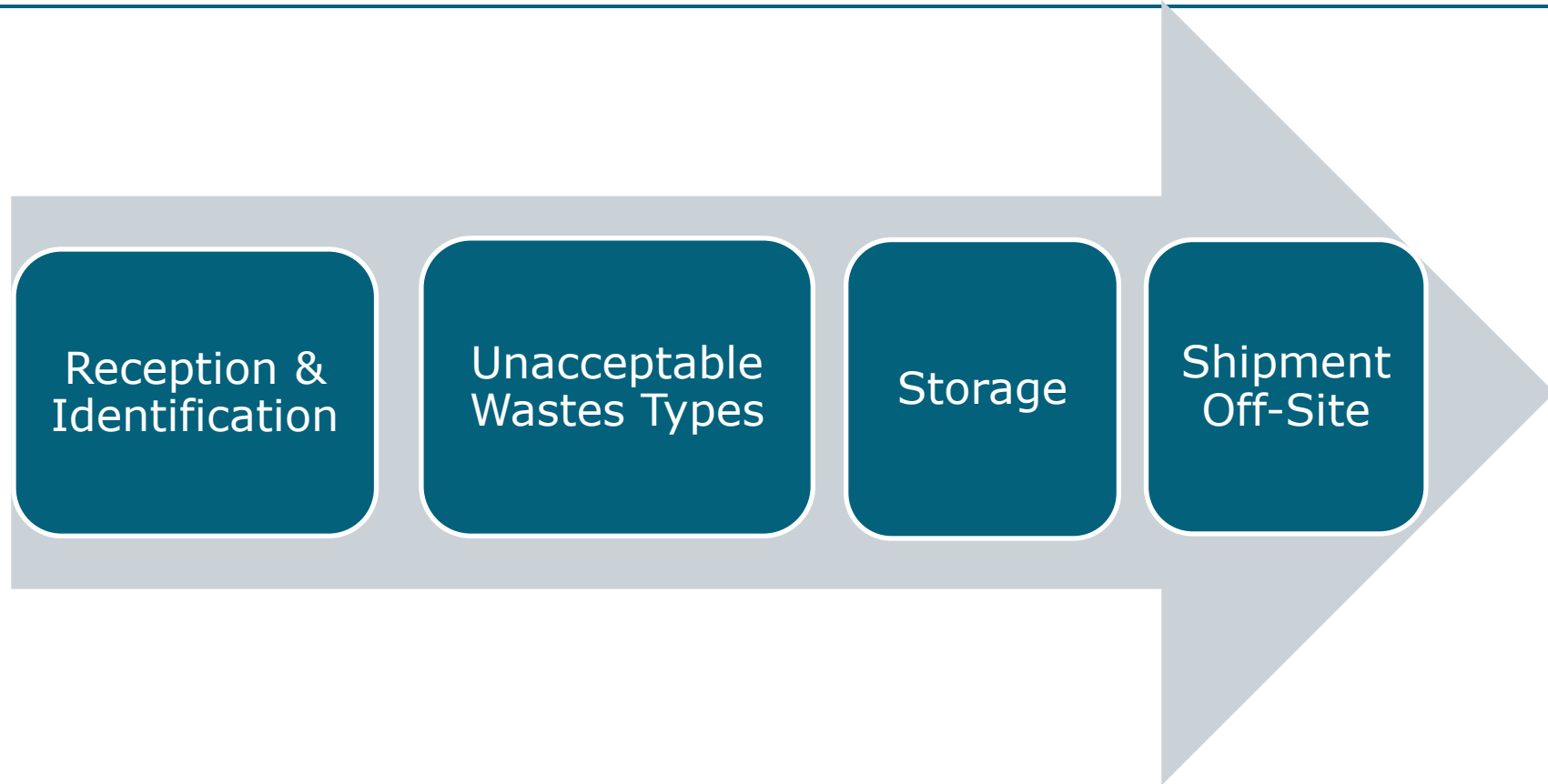
	Acids	Acids Containing Material	Automotive Batteries	Portable Household Batteries	Gas Cylinders - Flammable gas	Non-Flammable Gas Cylinders The Exempted	Garden chemicals i.e. pesticides & fungicides	Household chemicals i.e. detergents and Bleaches	Washing products i.e. Detergent, Washing powder, Stain Remover	Paints and related DIY products	Flammable liquids i.e. Solvents	Flammable Solids i.e. Fertilizers	Flammable Tubes & CFLs	Refrigerator Appliances i.e. Air Conditioners, Freezers, Stoves	Compressed Gas Cylinders i.e. Propane
Acids	Green	Red	Red	Red	Red	Red	Red	Red	Red	Red	Red	Red	Red	Red	Red
Acids Containing Material	Green	Red	Red	Red	Red	Red	Red	Red	Red	Red	Red	Red	Red	Red	Red
Automotive Batteries	Green	Red	Red	Red	Red	Red	Red	Red	Red	Red	Red	Red	Red	Red	Red
Portable household batteries	Green	Red	Red	Red	Red	Red	Red	Red	Red	Red	Red	Red	Red	Red	Red
Gas cylinders - Flammable gas	Green	Red	Red	Red	Red	Red	Red	Red	Red	Red	Red	Red	Red	Red	Red
Non-Flammable Gas cylinders	Green	Red	Red	Red	Red	Red	Red	Red	Red	Red	Red	Red	Red	Red	Red
Extinguishers	Green	Red	Red	Red	Red	Red	Red	Red	Red	Red	Red	Red	Red	Red	Red
Garden chemicals i.e. Pesticides	Green	Red	Red	Red	Red	Red	Red	Red	Red	Red	Red	Red	Red	Red	Red
Household chemicals i.e. Detergents and Bleaches	Green	Red	Red	Red	Red	Red	Red	Red	Red	Red	Red	Red	Red	Red	Red
Washing products i.e. Detergent, Washing powder, Stain Remover	Green	Red	Red	Red	Red	Red	Red	Red	Red	Red	Red	Red	Red	Red	Red
Paints and related DIY products	Green	Red	Red	Red	Red	Red	Red	Red	Red	Red	Red	Red	Red	Red	Red
Flammable liquids i.e. Solvents	Green	Red	Red	Red	Red	Red	Red	Red	Red	Red	Red	Red	Red	Red	Red
Flammable Solids i.e. Fertilizers	Green	Red	Red	Red	Red	Red	Red	Red	Red	Red	Red	Red	Red	Red	Red
Flammable Tubes & CFLs	Green	Red	Red	Red	Red	Red	Red	Red	Red	Red	Red	Red	Red	Red	Red
Refrigerator Appliances i.e. Air Conditioners, Freezers, Stoves	Green	Red	Red	Red	Red	Red	Red	Red	Red	Red	Red	Red	Red	Red	Red
Compressed Gas Cylinders i.e. Propane	Green	Red	Red	Red	Red	Red	Red	Red	Red	Red	Red	Red	Red	Red	Red

■ Separation may not be necessary. Note that some types of waste in the same group may not be compatible.
■ 3 metre separation / brick wall / separate cabinet.
■ 6 metre separation / brick wall / separate cabinet.
■ Low risk chemicals such as detergents and washing powders can be stored together. For high risk chemicals such as fertilizers, pesticides, solvent based paints and adhesives.
■ Stored remotely away from other wastes.

3. Managing Safety

- ❑ Risk Assessment
- ❑ Emergency Response Procedures
- ❑ Site Safety Statement
- ❑ Reporting Procedures

3. Processing HHW at a CA Site



4. Processing HHW

- ❑ Reception Assessment of the load
- ❑ Identification and Product Labelling
- ❑ Procedure for Unacceptable Wastes
- ❑ Storage/ Containers/signage
- ❑ Shipment Off-Site



Training Course

- 2017 working with ESTG to roll out training based in the guidance
- 2014 Waste Management Planning Regions

Thank you

Celine Horner
EPA Dublin Regional
Inspectorate
01 2680100
c.horner@epa.ie

