

Adopting the Water Safety Plan Approach for safe and secure Drinking Water Supplies

Niall Dunne / Derval Devaney
Water Team, OEE, EPA
26/27 March 2014

DW Quality Improving- *E.coli*

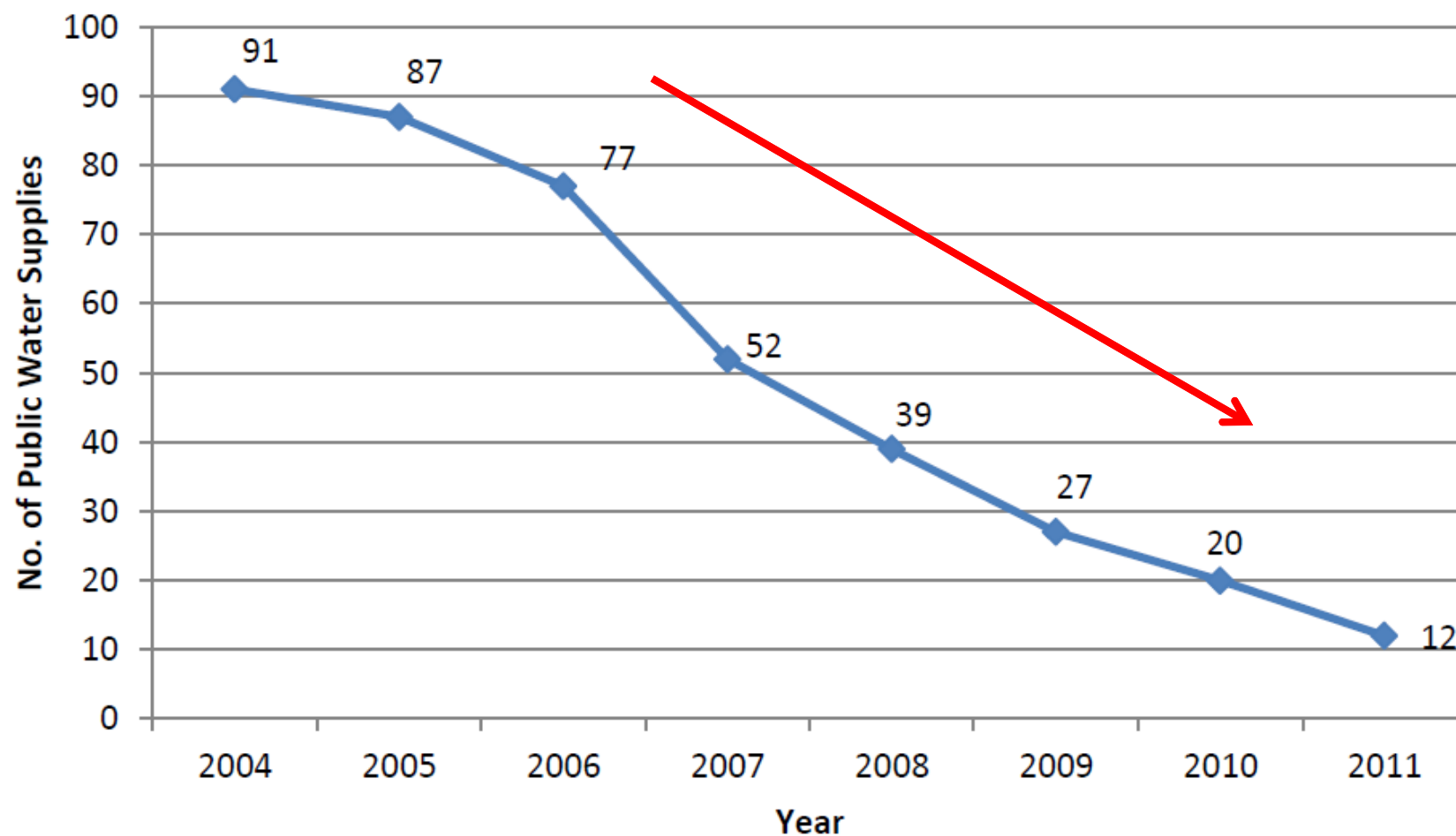


Figure E-1: Number of public water supplies in which *E. coli* was detected in compliance monitoring at least once from 2004 to 2011.

Why the need for change?

Over 99% compliance but.....

- Compliance indicates safety of a supply but *not* security
- Results = snapshot in time
- Reactive approach based on end point monitoring
- Too many incidents
- 74 Boil Water Notices and Restrictions affecting 50,000 in 2012
- Still many deficiencies in plant infrastructure and plant operation
- Known gaps & inconsistency in policies, procedures, training, etc.
- Consumer confidence an issue

How can we improve on almost 100% compliance?

WHO manual, available on WHO website:

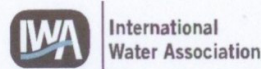
http://whqlibdoc.who.int/publications/2009/9789241562638_eng.pdf



Water Safety Plan Manual

Step-by-step risk management
for drinking-water suppliers

Practical Guidance to facilitate WSP development

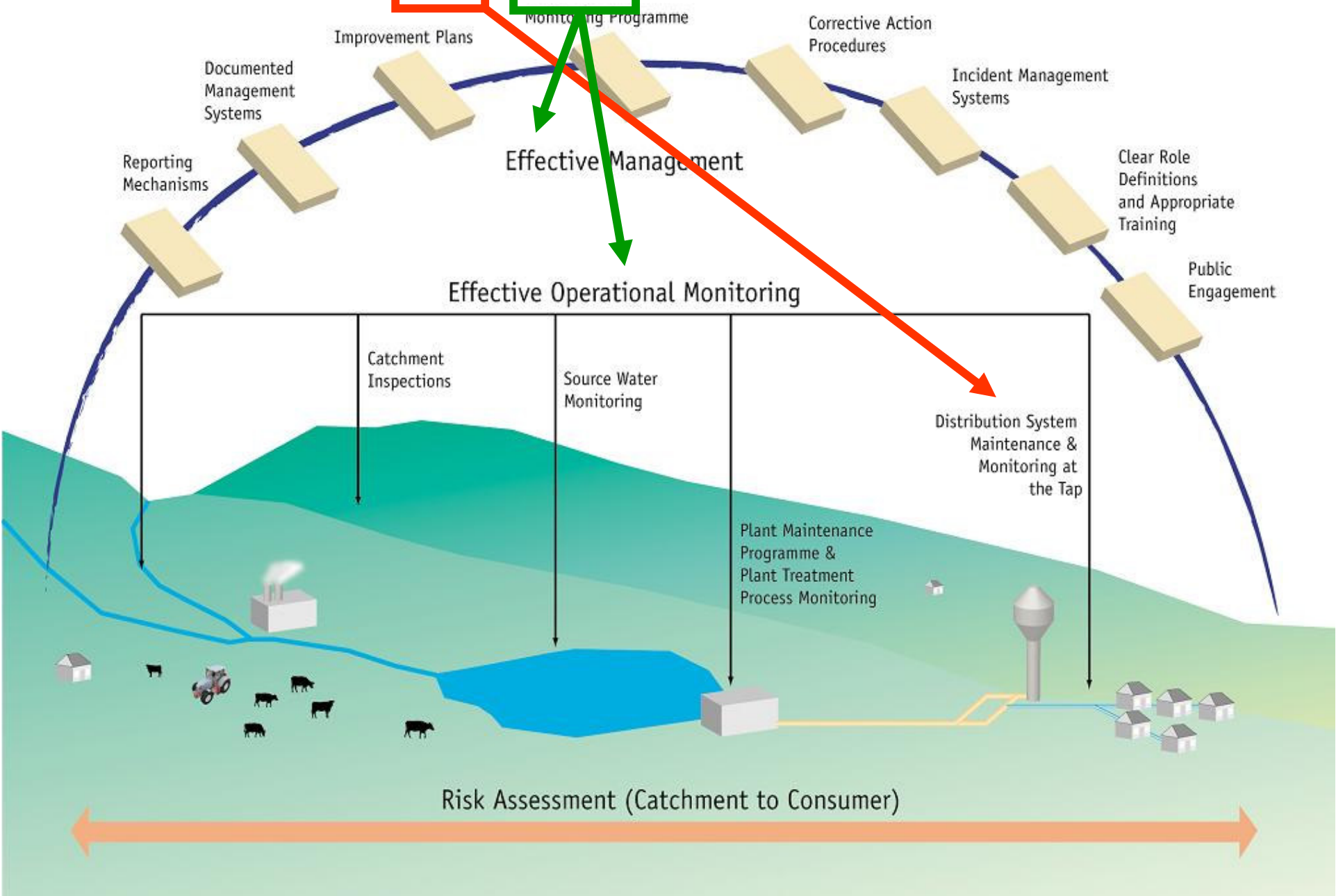




What is a Drinking Water Safety Plan?

*“The most effective means of consistently ensuring the safety of a drinking water supply through the use of a comprehensive **risk assessment** and **risk management approach** that encompasses all steps in water supply from catchment to consumer”*

Safe & Secure Drinking Water



Effective Management

Effective Operational Monitoring

Catchment Inspections

Source Water Monitoring

Plant Maintenance Programme & Plant Treatment Process Monitoring

Distribution System Maintenance & Monitoring at the Tap

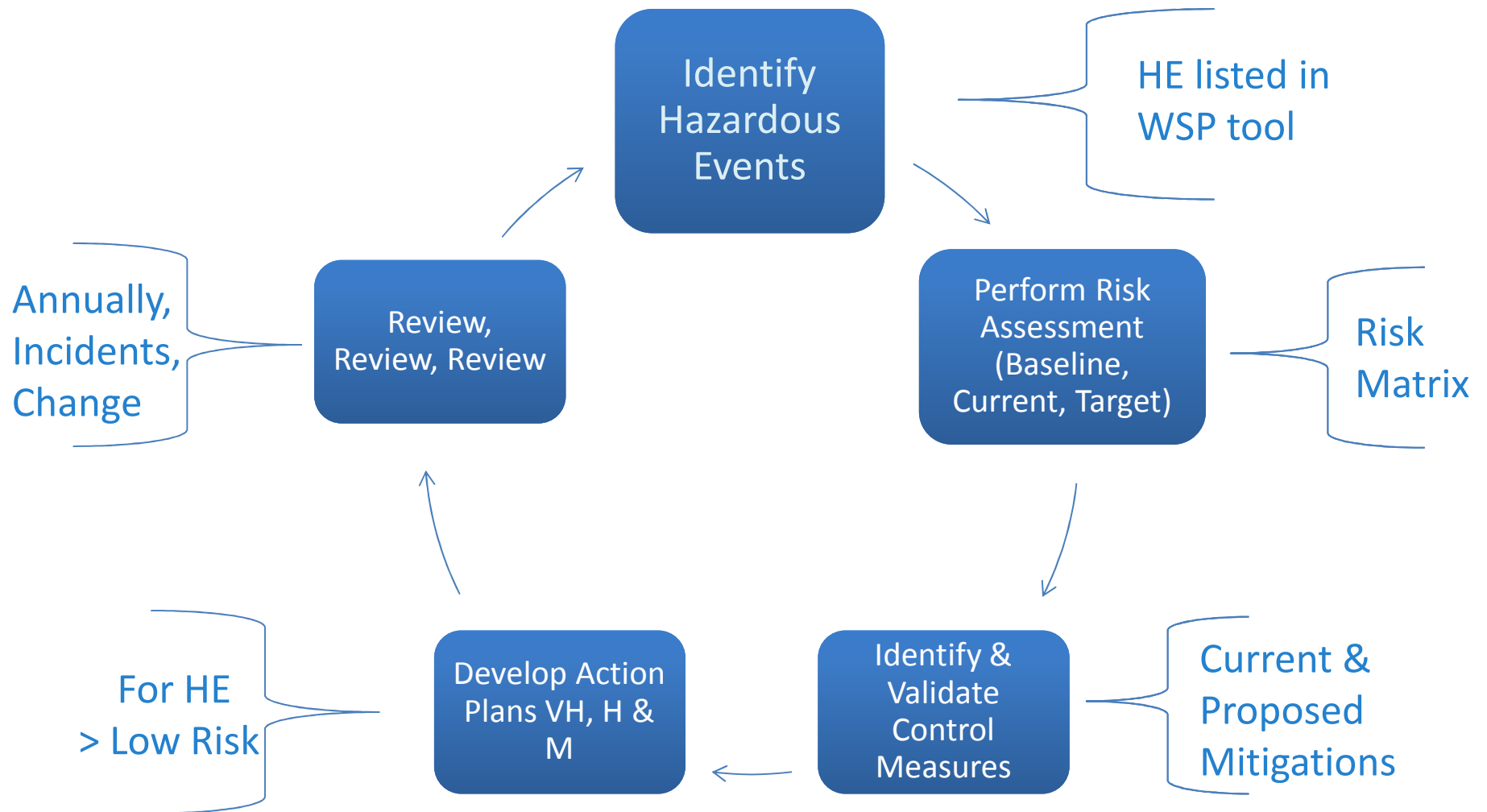
Risk Assessment (Catchment to Consumer)

The WSP approach

- Approach = risk management from source to tap
- Objective = protect public health

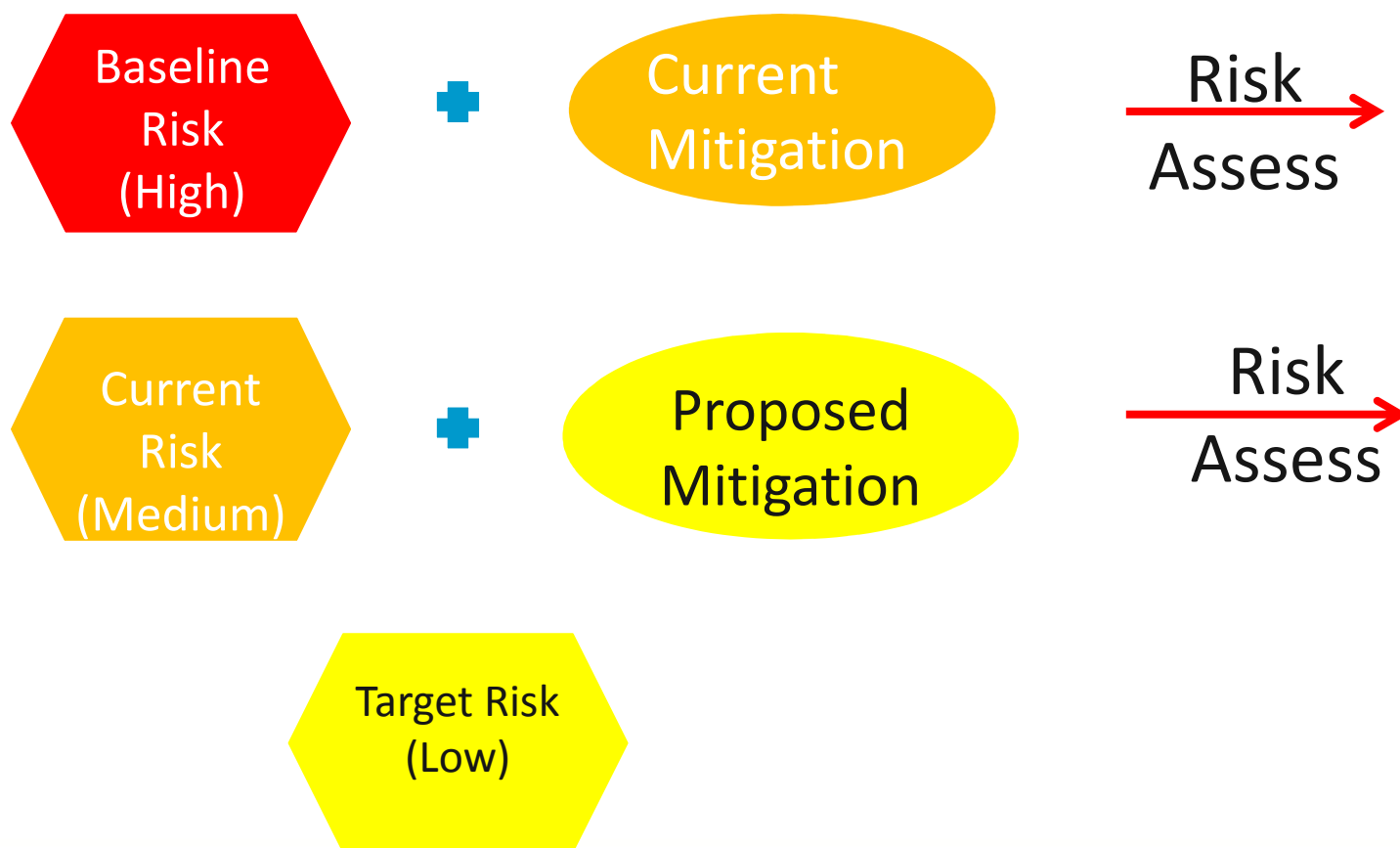
DWSP is an honest and regular self assessment of risk by competent staff (an inclusive team of experts) from within and possibly outside the WSA / IW

WSP Online Tool - How does it work?



Risk assessment of a Hazardous Event

Hazardous Event i.e. *Cryptosporidium*

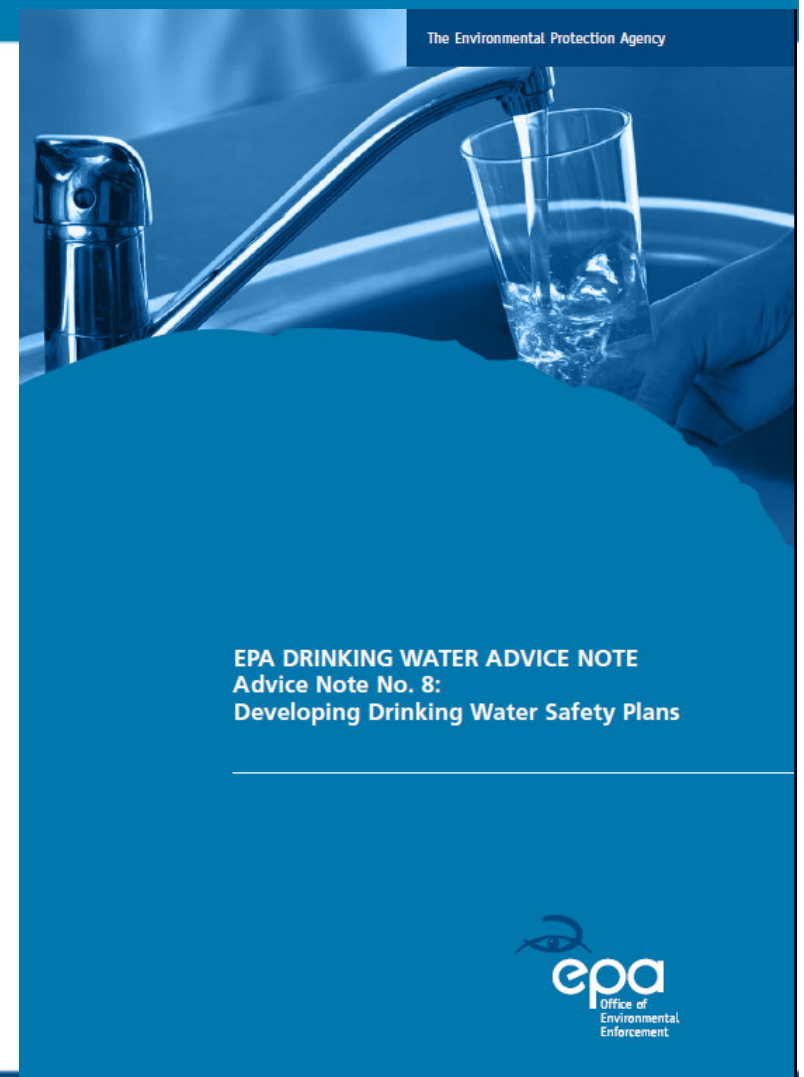


How to Access the online DWSP tool

- The DWSP tool is located within Compliance and Risk Information System (CRIS) application within EDEN.
- The user will firstly have to logon to EDEN at <https://www.edenireland.ie/>
- The user will have to register and obtain a username and password for EDEN.
- Once access to EDEN has been obtained.
- The next stage is to get access to the CRIS application, located within EDEN.
- Access to the CRIS application must be approved by each organisation's own CRIS application administrator, and not by the EPA.
- If your organisation does not have a CRIS application administrator, then approval must be sought from your organisation's EDEN administrator.

EPA WSP Advice Note (2011) & WSP Tool

- 2011 EPA Advice Note based on WHO guidelines
- Advice Note is NOT a reproduction of WHO guidelines but a brief note on how WSPs should be done in the Irish context
- Guidance on hazard identification, risk assessment and the preparation of action plans
- Available on web at <http://www.epa.ie/downloads/advice/water/drinkingwater/>
- EPA has also developed with the Working Group the online tool and guidance document





Where are we going?

- Target completion of 8 largest Public Water Supplies (PWS)
- Extend WSP approach Nationally to all PWSs
- Provide guidance and training on use of the WSP tool
- Provide support and guidance to WSAs via NIECE
- DWSP tool will be live after training
- WSP to replace the Remedial Action List (RAL)
- Benchmark implementation against International Standards (NSAI)

What will the WSP provide?

- Safe and Secure Drinking Water
- Improved water quality and incident reduction
- Identification of hazardous events
- Assessment and regular review of the risk posed by hazardous events
- Greater clarity of ownership and responsibility of risks
- Clearer, focused and prioritised investment programmes
- Development of Action Plans
- Public reassurance – transparency & value for money
- Move from reactive to proactive management of risk
- Improved liaison with other stakeholders (HSE, IW, DECLG, resident groups, industry, NSAI, EPA)

STAKEHOLDERS

IrishWater



Department of the Environment, Climate and Communications
Riailtas Áitiúil
Local Government



Teamwork

Engage with stakeholders



Environmental Protection Agency
Aonad Um Chaomhnú Comhshaoil

Commission for Energy Regulation
Coimisiún um Rialáil Fuinnimh





Feedback/Queries on WSP tool

Contact your

Drinking Water Inspector

with any queries / issues you have on the WSP Tool

Questions?

Niall Dunne

Drinking Water team

EPA Regional Office, Inniscarra, Cork

n.dunne@epa.ie

Derval Devaney

Drinking Water Team

EPA Regional Office, Richview, Dublin

d.devaney@epa.ie