



An Roinn Iompair  
Turasóireachta agus Spóirt  
Department of Transport,  
Tourism and Sport

---

# ROADS Services Training Group

## LOCAL AUTHORITY ROADS CONFERENCE and EXHIBITION - 2019

Lyrath Estate Hotel, Kilkenny, May 2019.

# LOCAL AUTHORITY ROADS CONFERENCE and EXHIBITION – 2019

---

## Chapter 8 of Traffic Signs Manual – Updates

Jerry Crowley

A/Senior Executive Engineer

Cork County Council



An Roinn Iompair  
Turasóireachta agus Spóirt  
Department of Transport,  
Tourism and Sport

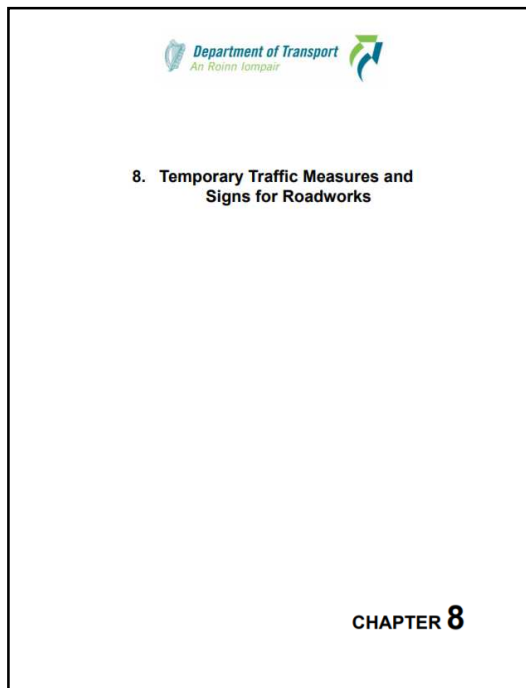
# Overview

---

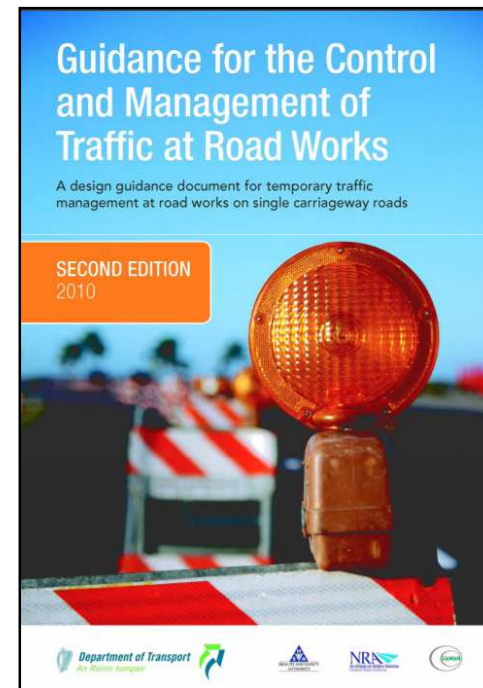
- ❑ Temporary Traffic Management Documentation
- ❑ Road Level Classifications
- ❑ Temporary Traffic Management Roadworks Types
- ❑ Design Parameters
- ❑ Temporary Traffic Management Training
- ❑ Temporary Traffic Management Implementation

# Temporary Traffic Management (TTM)

- Current Legislation and Guidance for TTM on Irish Roads



**Current Version November 2010**



**Current Version 2010**

# Temporary Traffic Management (TTM)

- Proposed Legislation and New Guidance for TTM on Irish Roads
  - **TSM Chapter 8 requires Ministerial approval to implement revisions**



**Awaiting  
Ministerial  
Approval**

**Suite of TTM  
Documentation**

•Ch 8 Design Guidance

**Operations**  
•Installation  
•Modification  
•Removal

# Temporary Traffic Management (TTM)

- TTM Design Guidance



- TTM Operations Guidance

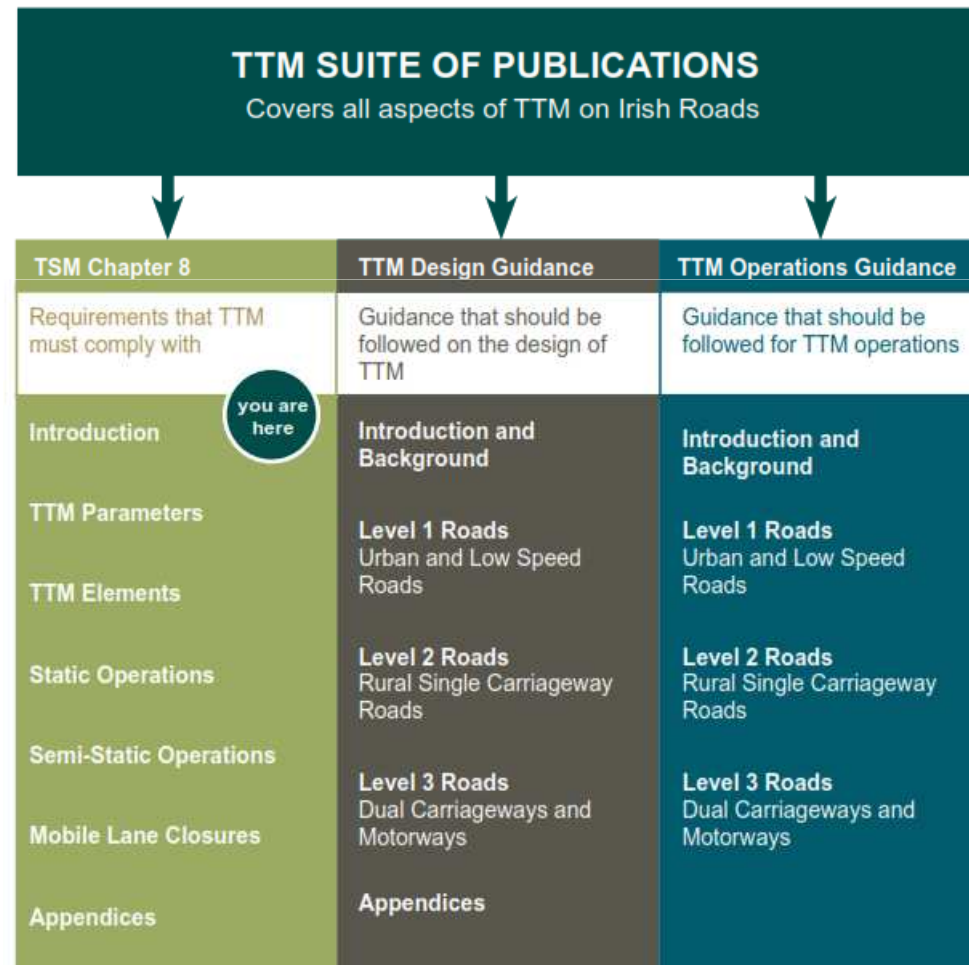


# Temporary Traffic Management (TTM)



An Roinn Iompair,  
Turasóireachta agus Spóirt  
Department of Transport,  
Tourism and Sport

- Flowchart for users



# TTM Road Classification System

Existing

Table 8.1.1: Road Classifications

Road Classification	Type of Road	Speed Limit	Traffic Volume
Level 1 (LV1)	Single Carriageway	30 km/h	All traffic volumes
Level 2 (LV2)		50 or 60km/h	All traffic volumes
Level 3 (LV3)		80 or 100km/h	ADT $\leq$ 5000 vpd
Level 4 (LV4)		80 or 100km/h	ADT $>$ 5000 vpd
Level 5 (LV5)	Dual Carriageway and Motorway	50, 60 or 80km/h	All traffic volumes
Level 6 (LV6)		100 or 120km/h	

Note: ADT = Average Daily Traffic – the total two-way vehicular traffic flow on a specific day.



# TTM Road Classification System

## Proposed

Level		Carriageway Type	Speed / Speed Limit (km/h)
Main	Sub		
Level 1	i	Single	≤ 30
	ii	Single	40
	iii	Single	50
	iv	Single	60
		Multi-lane / Dual	≤ 60
Level 2	i	Single	80
	ii	Single	100
Level 3	i	Dual and Motorway	80
	ii	Dual and Motorway	≥ 100

Level 1 – Low Speed and Urban, DMURS geometric standards

Level 2 – Rural Single Carriageway

Level 3 – High Speed Duals & Motorways

# Level 1 Urban Roads

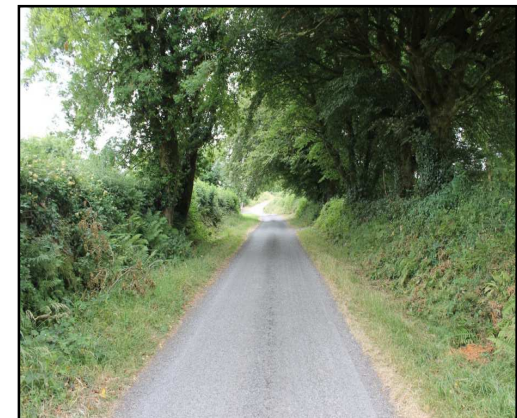
Level 1	Carriageway Type	Speed Limit / Speed (km/h)
Sub		
i	Single	$\leq 30$
ii	Single	40
iii	Single	50
iv	Single	60
	Multi-Lane / Dual	$\leq 60$



## Part 2 – Level 2 Roads

---

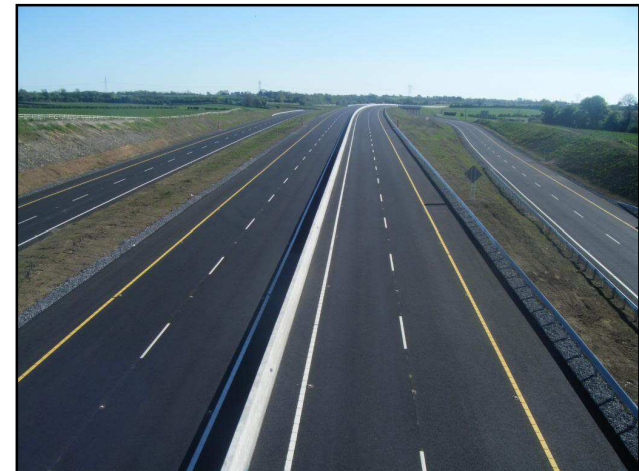
Level		Carriageway Type	Speed Limit / Speed (km/h)
Main	Sub		
Level 2	i	Single	80
	ii	Single	100



# Part 3 – Level 3 Roads

---

Level		Carriageway Type	Speed Limit / Speed (km/h)
Main	Sub		
Level 3	i	Dual	80
	ii	Dual	≥ 100



# Roadwork Types Existing

Type	Type of Road
Type A	Full time roadworks that remain in operation in all traffic flows and all visibility conditions. > 24hrs
Type B	Part-time roadworks that remain in operation when the expected traffic flow is less than the available carriageway capacity
Type C	Roadworks that are of short duration and involve the use of one or two vehicles when the elected traffic flow is less than the carriageway capacity or the works do not reduce the carriageway width significantly
Semi-Static	Roadworks where operations are mobile or only stationary for very short periods, but where static signs and temporary traffic measures are used
Mobile	Roadworks where operations are mobile or only stationary for very short periods where mobile warning signs and temporary traffic measures are used

# Roadwork Types Proposed

Type	Type of Road	Traffic Flow	Visibility	Duration
Static Type A	Works requiring full-time TTM	All	All	All, > 12 hrs
Static Type B	Works normally involving the use of 1-2 vehicles	Within traffic flow capacity	All	≤ 12 hours
Static Type C	Works at discrete locations, and not presenting a traffic hazard		Good	≤ 15 minutes
Semi-Static Operation (SSO)	Roadworks where operations are mobile or only stationary for very short periods, but where static signs and temporary traffic measures are used		Good	≤ 15 minutes stop
Mobile Lane Closure (MLC)	Roadworks where operations are mobile or only stationary for very short periods where mobile warning signs and temporary traffic measures are used		Good	≤ 15 minutes stop



# Site Layouts

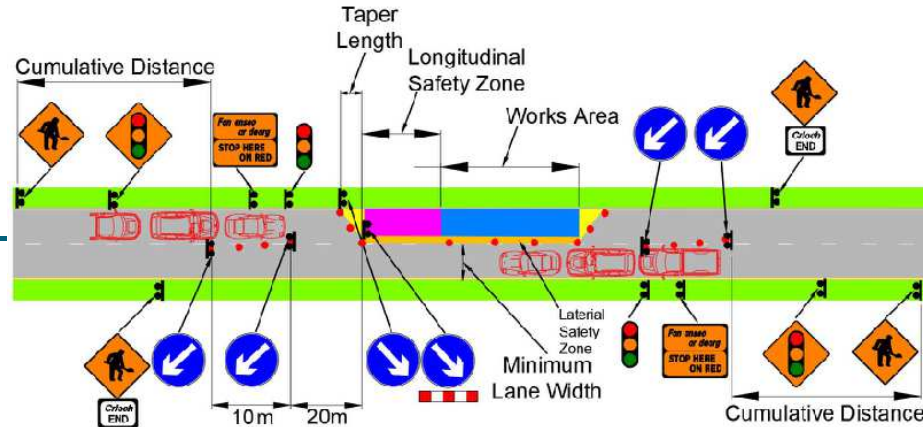
---

## Design Parameters



# Level 1 (i)

≤ 30 km/h



## Existing [Level 1]

## Proposed [Level 1(i)]

	Type A	Type B	Type C
Sign Size	<b>600mm</b>		
Visibility	<b>50m</b>		
Number	<b>2</b>		
Cumulative Distance	<b>50m</b>		
Cone Spacing			
Tapers	<b>3m</b>		
Longitudinal	<b>6m</b>		
Safety Zone			
Longitudinal	<b>5m</b>		
Lateral	<b>0.5m</b>		

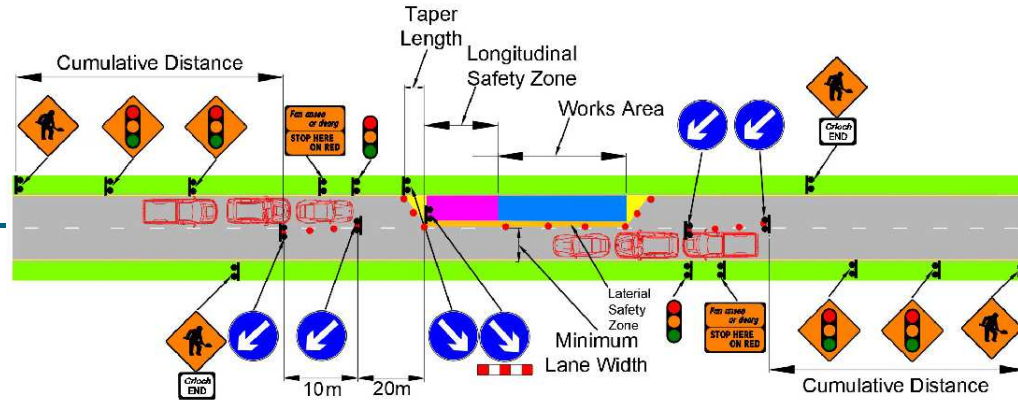
	Type A	Type B	Type C
Sign Size	<b>450mm</b>		
Visibility	<b>25m</b>		<b>25m</b>
Number	<b>2</b>	<b>1</b>	
Cumulative Distance	<b>20m</b>	<b>10m</b>	
Cone Spacing			
Tapers	<b>1m</b>		
Longitudinal	<b>3m</b>		
Safety Zone			
Longitudinal	<b>0.5m</b>		
Lateral	<b>0.5m</b>		



# Level 1(iv)

## 60 km/h

(Single/Multi-lane/dual)



### Existing [Level 2]

	Type A	Type B	Type C
Sign Size	<b>600mm</b>		
Visibility	<b>50m</b>		
Number	<b>3</b>		<b>2</b>
Cumulative Distance	<b>75m</b>		<b>50m</b>
Cone Spacing			
Tapers	<b>3m</b>		
Longitudinal	<b>6m</b>		
Safety Zone			
Longitudinal	<b>25m</b>		
Lateral	<b>0.5m</b>		

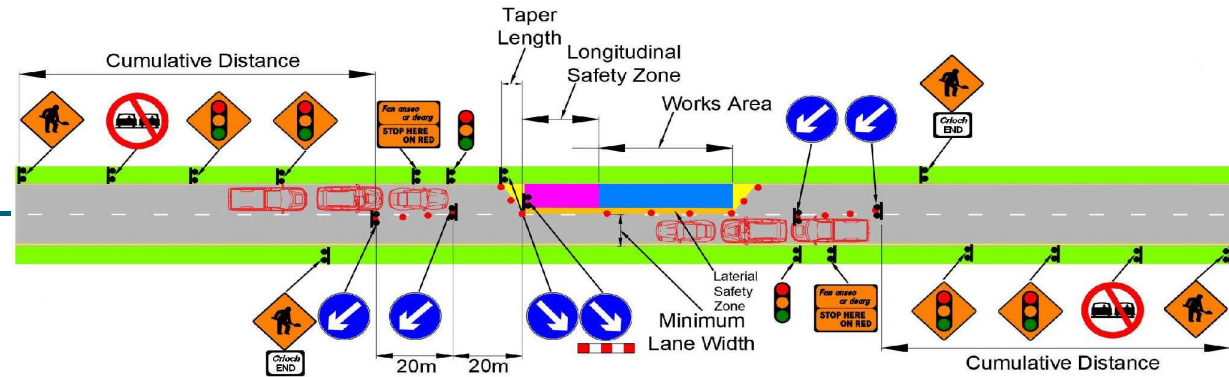
### Proposed [Level 1(iv)]

	Type A	Type B	Type C
Sign Size	<b>600mm</b>		
Visibility	<b>60m</b>		<b>60m</b>
Number	<b>3</b>	<b>2</b>	
Cumulative Distance	<b>60m</b>	<b>40m</b>	
Cone Spacing			
Tapers	<b>3m</b>		
Longitudinal	<b>6m</b>		
Safety Zone			
Longitudinal	<b>15m</b>		
Lateral	<b>0.5m</b>		

# Level 2(i)

## 80 km/h

(Single)



### Existing [Level 3 & 4]

	Type A	Type B	Type C
Sign Size	<b>600/750mm</b>		
Visibility		<b>120m</b>	
Number	<b>4</b>		<b>3</b>
Cumulative Distance	<b>800m</b>		<b>600m</b>
Cone Spacing			
<i>Tapers</i>	<b>3m</b>		
<i>Longitudinal</i>	<b>12m</b>		
Safety Zone			
<i>Longitudinal</i>	<b>60m</b>		<b>45m</b>
<i>Lateral</i>	<b>1.2m</b>		<b>1.2m</b>

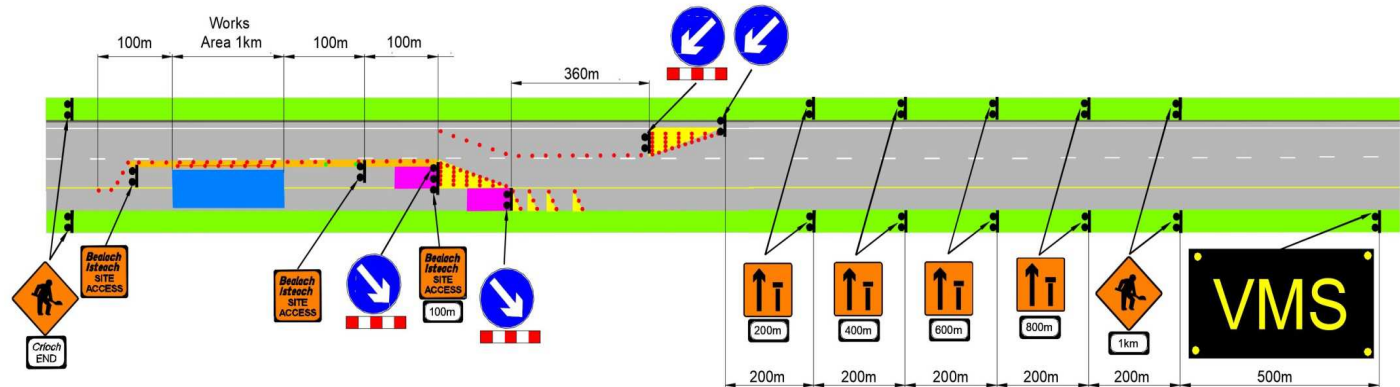
### Proposed [Level 2(i)]

	Type A	Type B	Type C
Sign Size	<b>600mm</b>		
Visibility	<b>90m</b>		<b>90m</b>
Number	<b>4</b>	<b>3</b>	
Cumulative Distance	<b>480m</b>	<b>360m</b>	
Cone Spacing			
<i>Tapers</i>	<b>3m</b>		
<i>Longitudinal</i>	<b>12m</b>		
Safety Zone			
<i>Longitudinal</i>	<b>45m</b>		
<i>Lateral</i>	<b>1.2m</b>		

# Level 3 (ii)

≥ 100 km/h

(dual Carriageway/  
motorway)



## Existing [Level 6]

	Type A	Type B	Type C
Sign Size	<b>1200mm</b>		
Visibility	<b>160m</b>		
Number		<b>5</b>	
Distance		<b>1000m</b>	
Cone Spacing			
<i>Tapers</i>	<b>1.5m</b>		
<i>Longitudinal</i>	<b>12m</b>		
Safety Zone			
<i>Longitudinal</i>	<b>60m</b>		
<i>Lateral</i>	<b>1.2m</b>		

## Proposed [Level 3(ii)]

	Type A	Type B	Type C
Sign Size	<b>1200mm</b>		
Visibility	<b>160m</b>		<b>160m</b>
Number	<b>5</b>	<b>4</b>	
Distance	<b>1000m</b>	<b>800m</b>	
Cone Spacing			
<i>Tapers</i>	<b>3m</b>		
<i>Longitudinal</i>	<b>12m</b>		
Safety Zone			
<i>Longitudinal</i>	<b>60m</b>		
<i>Lateral</i>	<b>1.2m</b>		

# Temporary Traffic Management Training

---

- **Solas Construction Skills Certification Scheme Courses:**
  - CSCS – Health and Safety at Roadworks
    - Substantial changes to format and content
  - CSCS – Signing, Lighting and Guarding
    - Update for new standards
    - More Urban Guidance and Risk Assessment Module
  - Courses Complete, SLG Trainers have being updated on new course contents.

# Temporary Traffic Management Training

---

- **LASNTG Designer / Inspector Courses** - QQI Level 6 Accreditation Sought
  - Temporary Traffic Management Design Level 1 and 2
  - Temporary Traffic Management Design Level 3
  - **Traffic Management Audit and Inspection - new**
- **LASNTG High Speed Courses** - QQI Level 5 Accreditation Sought
  - Temporary Traffic Management on High Speed Roads Static
  - Temporary Traffic Management on High Speed Roads Mobile
  - Temporary Traffic Management on High Speed Roads IPV
    - All courses to be updated for new standards and new guidance topics
  - **Temporary Traffic Management Supervisor Level 3 Roads - new**
    - New course for Level 3 supervision of works crews

# Temporary Traffic Management Implementation

---

- **National Launch :**

- June 2019.
- Department Circular will inform all stakeholders.
- Transition Period until 31<sup>st</sup> December 2019.

- **Regional Seminars :**

- Dublin, North-West, South and Mid-Lands
  - Dates/Locations will be included in circular
- Anticipated ½ Day duration to give an overview of changes and implications.
  - No fees to delegates to attend these seminars
- Delivered by the Project Team involved in the TTM Suite Developments.
- Open to all Stakeholders
  - Allocations will be given to ensure all organisations can be accommodated.

# Temporary Traffic Management Implementation

---

## Regional Seminars

- They are a detailed overview of the TTM suite of documents

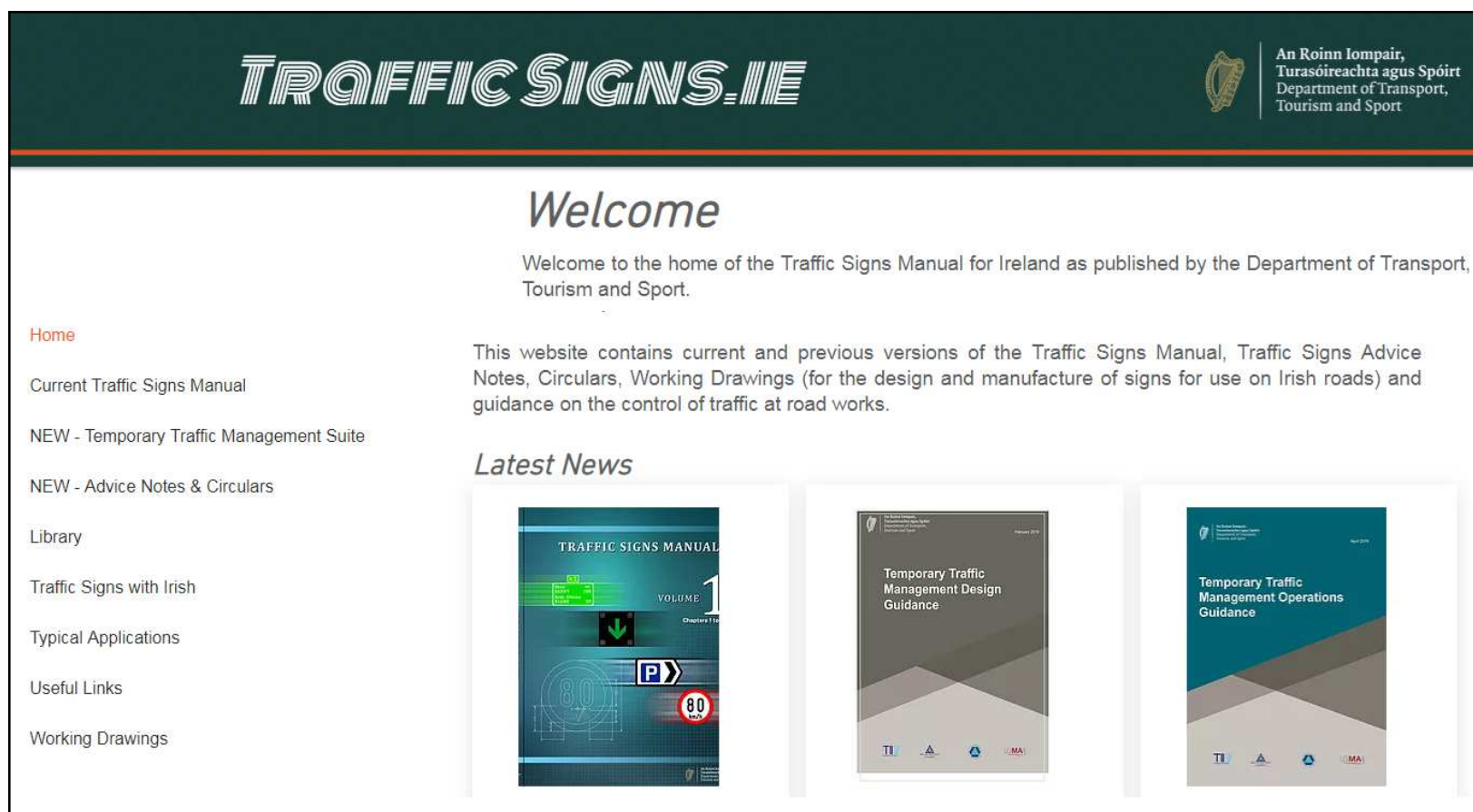
## TTM Courses

- LASNTG has the new and updated TTM Courses available for release once the TTM Suite has been signed.
- All LASNTG TTM Training courses have been Piloted by the Project Team.

# Temporary Traffic Management Implementation

- Traffic Signs Website for Access to the TTM Documents

[www.trafficsigns.ie](http://www.trafficsigns.ie)



The screenshot shows the homepage of the Traffic Signs website. At the top, there is a dark green header with the text "TRAFFIC SIGNS.IE" in a stylized, outlined font on the left, and the Irish harp logo and the text "An Roinn Iompair, Turasóireachta agus Spóirt / Department of Transport, Tourism and Sport" on the right. Below the header, the word "Welcome" is centered in a large, italicized font. Underneath, a paragraph reads: "Welcome to the home of the Traffic Signs Manual for Ireland as published by the Department of Transport, Tourism and Sport." To the left of the main content area is a vertical navigation menu with the following items: "Home" (highlighted in red), "Current Traffic Signs Manual", "NEW - Temporary Traffic Management Suite", "NEW - Advice Notes & Circulars", "Library", "Traffic Signs with Irish", "Typical Applications", "Useful Links", and "Working Drawings". To the right of the welcome message, a paragraph states: "This website contains current and previous versions of the Traffic Signs Manual, Traffic Signs Advice Notes, Circulars, Working Drawings (for the design and manufacture of signs for use on Irish roads) and guidance on the control of traffic at road works." Below this text is a section titled "Latest News" which features three document covers. The first cover is for "TRAFFIC SIGNS MANUAL VOLUME 1" and shows various traffic signs. The second cover is for "Temporary Traffic Management Design Guidance" and has a dark background with a light-colored geometric shape at the bottom. The third cover is for "Temporary Traffic Management Operations Guidance" and has a light blue and grey geometric design. All three covers have logos for TI, A, and MA at the bottom.





An Roinn Iompair  
Turasóireachta agus Spóirt  
Department of Transport,  
Tourism and Sport

---

# Thank You

Contact: [ttm@dtas.ie](mailto:ttm@dtas.ie)