

# Water Services Training Group

20<sup>th</sup> Annual Conference

## Meeting Standards and Expectations in the Water Industry

Lyrath Estate Hotel, Kilkenny



# Meeting Standards and Expectations in the Water Industry

**Planning & Development – working together to facilitate development**

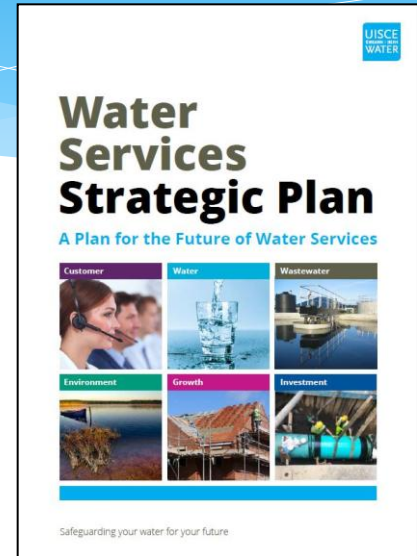
John Casey  
Asset Strategy & Sustainability Manager  
Irish Water



An Roinn Tithíochta, Pleanála,  
Pobail agus Rialtais Áitiúil  
Department of Housing, Planning,  
Community and Local Government

# Strategic Objectives

- \* Water Services Strategic Plan
  - > Support Spatial Planning Policy
  - > Facilitate Growth
  - > Timely and Cost Effective
  
- \* Supporting Government's Action Plan for Housing & Homelessness
  - > 25,000+ new homes per year by 2020



# How do we Plan and Provide for Growth?

- \* 918 WTPs
- \* 62,000km watermains
- \* 1,155 WWTPs
- \* 25,000km ww pipelines

# How do we Plan and Provide for Growth?

- \* 918 WTPs
- \* 62,000km watermains
- \* 1,155 WWTPs
- \* 25,000km ww pipelines

Need to understand  
treatment plants load/  
capacity and headroom

# How do we Plan and Provide for Growth?

- \* 918 WTPs
- \* 62,000km watermains
- \* 1,155 WWTPs
- \* 25,000km ww pipelines

Need to understand  
treatment plants load/  
capacity and headroom

Need to understand  
networks capacity/  
constraints and loads

# How do we Plan and Provide for Growth?

- \* 918 WTPs
- \* 62,000km watermains
- \* 1,155 WWTPs
- \* 25,000km ww pipelines

Need to understand treatment plants load/capacity and headroom

Need to understand networks capacity/constraints and loads

Develop understanding of Demand Projections and Trends

# Progress to date

- \* Investment Planning 2017-21 a big step forward

Now developing:

- \* WTP and WWTP capacity registers
- \* Sewer flooding register on GIS
- \* Major Programme of DAPs being progressed
- \* Low water pressure areas on GIS
- \* Using best available demographic projections

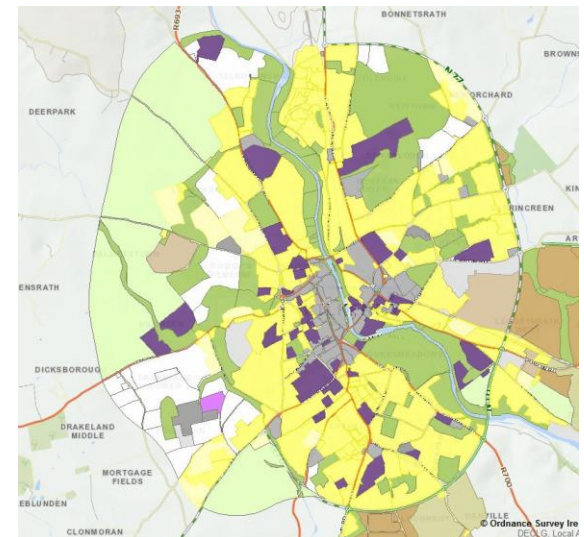


# How we are working together

## 1. Forward Planning and Development Control

- \* IW prescribed body for Development Plans, LAPs, SDZs
- \* IW Spatial Planning team engaging with all Planning Authorities
- \* IW advises on water services capacity issues, constraints and plans to upgrade assets
- \* Submits Objectives for inclusion beneficial to IW and water services
- \* IW Investment Plans take account of Spatial Plans
- \* Contact for Forward Planning

[spatialplanning@water.ie](mailto:spatialplanning@water.ie)



# How we are working together

## 1. Forward Planning and Development Control

- \* IW prescribed body for development control
- \* LA Water Services acting as IW agents in making observations – upload to IW for submission by IW (Abtran)
- \* Additional resources being recruited to IW spatial planning team

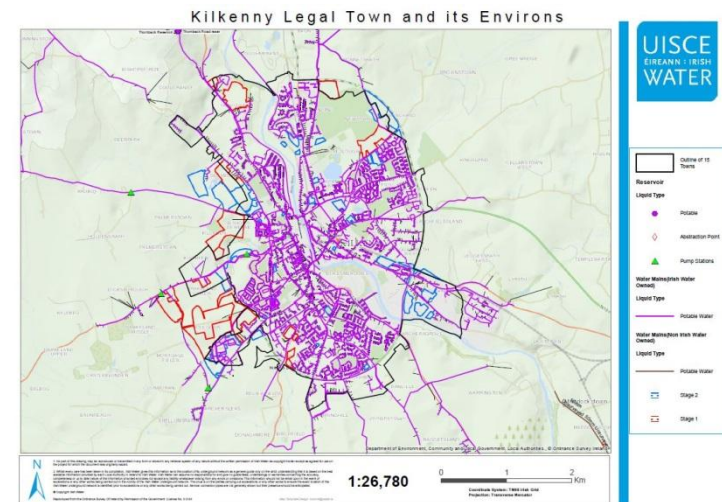
- aiming to review process and get more value from data

- \* Contact for development control: [planning@water.ie](mailto:planning@water.ie)

Irish Water Template	Version 6.0	WISC WATER	
IW - PA1 - ANEX - 002 - 01	PLANNING PERMISSION OBSERVATION REPORT		
IW Office Use only			
IW unique planning ref. no.			
IW customer enquiry no.			
Capacity assessment available			
All fields marked thus: * Require completion. All other data is to be input only when applicable.			
<b>Section A - General Information</b>			
<b>1 Development Details</b>			
1.1 Planning Application No.	PW56A/0103		
1.2 Brief description of the development. (Copy description provided in notification letter/planning list)	Development on site area of 0.39ha. The proposed development consists of the construction of a single storey building to be used as a car sales showroom, accommodating car display area, ancillary offices, staff areas, associated garage and signage. The proposed building has a floor area of 870 sq.m with an eave height of 5.7m and an open height of 6m. The proposed development also provides for external car display area, car parking, car		
1.3 Location: (Copy/Paste from description provided in notification letter/planning list)	Site at Damastown Close, Damastown Business Park, Dublin 15		
<b>2 Dates Timeline</b>			
2.1 Date Received (Planning Authority)	13/07/2016		
2.2 Date Received IW & LA WSD	27/07/2016		
a. Due Date for WSD to send report to IW	09/08/2016		
b. Due Date for IW to make Submission to Planning Dept.	24/08/2016		
Note: If the Due Date falls on a weekend or public holiday, the preceding working day is to be used			
<b>2.3 Retained Further Information</b>			
a. Date FI Received (Planning Authority)			
b. Date Received IW & LA WSD			
c. Due Date for WSD to send report to IW			
d. Due Date for IW to make Submission to Planning Dept.			
Note: If the Due Date falls on a weekend or public holiday, the preceding working day is to be used			
3 To:	Irish Water <b>Greater Dublin</b> regional (head) office		
4 Origin:	Water Services Dept. <b>Fingal County Council</b> acting as agents for Irish Water		
<b>5 Observation report in relation to</b>			
a.	• Pre Planning Report		
b.	• New planning application	Yes	
c.	• Extent of permission duration		
d.	• Response to request for further information		
e.	• Planning appeal (See Section C)		
f.	• Strategic Infrastructure Development		
g.	• Retention Planning Application		
h.	• Part B Submission		
6.1 Does the proposed development require a water/wastewater service connection from Irish Water?			Yes
6.2 Is an IW observation required to be submitted to the Planning Authority/ABP			Yes
*YES: COMPLETE ALL APPLICABLE SECTIONS A7 to E			

## 2. Strategic Network Extensions

- \* Key challenge – Infrastructure delivery to open up strategic development areas.
- \* DHPCLG, IW and CCMA WG have developed prioritisation criteria for investment.
- \* Criteria
  - Years supply of serviced units
  - 6 year deficit of serviced units
  - # units delivered
  - Cost/unit
- \* Strategic Network Development Plans
- \* Aligned to objectives of Action Plan for Housing & Homelessness – deliver housing in short term to 2021.
- \* Aiming to identify prioritised projects December 2016.



## 3. Connections & Developer Services (CDS)

### Pre-Connection Enquiries:

- \* To inform you re capacity of water and wastewater infrastructure in an area.
- \* Confirmation of feasibility issued (where appropriate) to submit with your planning application.

*Engage in the Pre-Connection Enquiry process early to avoid any subsequent issues or delays in the planning/construction/ connections process!*



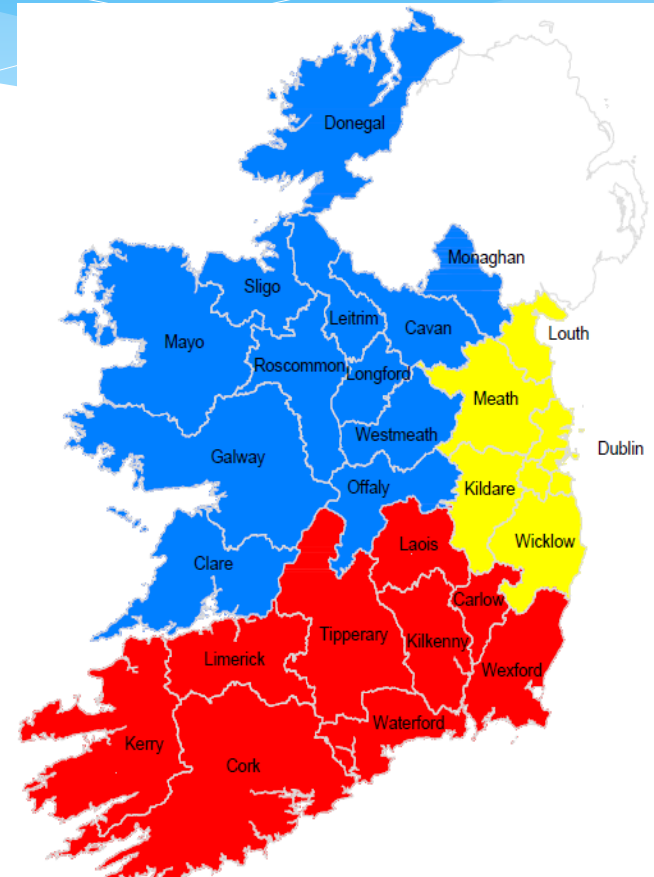
### Connection Agreements:

- \* Once you have planning permission, apply for your connection. Further details are at [www.water.ie/connections](http://www.water.ie/connections)
- \* You will receive a Connection Offer from us outlining connection costs, terms and conditions, etc.



### Diversions:

- \* If your development requires an Irish Water asset to be re-routed, contact us to discuss a diversion of any of our assets as soon as your outline plans are available.



For further details, please visit our webpage at [www.water.ie/connections](http://www.water.ie/connections)

# 3. CDS Transformation Project

## Phase 1:

- \* IW to become single point of contact for all new connections via website/call centre.
- \* Establish a standard pre-connection enquiry process.
- \* Develop and implement a suite of technical connection Standards.



## Phase 2:

- \* Develop systems to allow for new Development Water Services Infrastructure to become fully adopted by IW with the required wayleaves and legal easements in place.
- \* IW to appoint a regional contractor to carry out new connection works in areas where LAs do not currently carry out such works.



## Pilot Projects:

- \* It is the intention to pilot each of these phases in advance of full implementation across the country. Each phase will be piloted in a number of LA's to cover as many scenarios as possible.



Cork  
County  
Council



Dublin  
City  
Council



Galway  
City  
Council



Waterford  
City & County  
Council



Westmeath  
County  
Council

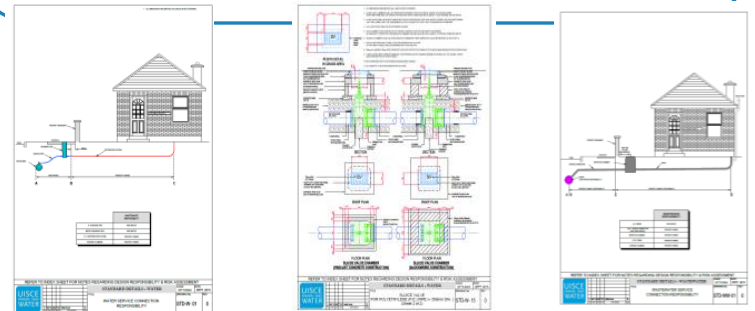
### 3. CDS – Irish Water Standard Details

“Standard Details” comprise two suites of details, one for water and one for wastewater infrastructure in new developments:

- \* Issued initially in June with revisions in August following industry feedback.
- \* Use of the Standard Details now mandated in all new Connections Offers from June 2016. Exemptions can be sought up to early October 2016.
- \* 38 Water & 35 Waste Water Standard Details with associated Design Risk Assessments.

Standard Details available at the following locations:

- \* IW LA Portal <http://thewell/sites/LA/SitePages/Home.aspx>
- \* IW Website <http://www.water.ie/help-centre/connections/>



Codes of Practice:

- \* To be issued initially in Q4 2016 following stakeholder engagement.

Stakeholder Engagement:

**LOCAL AUTHORITY CONSULTATIVE GROUP**



An Roinn Tithíochta, Pleanála, Pobail agus Rialtais Áitiúil  
Department of Housing, Planning, Community and Local Government

# To Sum Up

- \* Good start in working together to facilitate development
- \* Improving asset data and intelligence will facilitate better outcomes
- \* Additional resources and streamlining will add value to spatial planning engagement
- \* CDS Transformation Project will deliver better service for developers
- \* We will deliver on WSSP commitments to support social and economic development of Ireland