

Environmental Services Training Group

LOCAL AUTHORITY ENVIRONMENT CONFERENCE 2018

Climate Change and the Environment

A New Reality

Minella Hotel, Clonmel Wednesday 25th April 2018.

Climate Change and the Environment

A New Reality



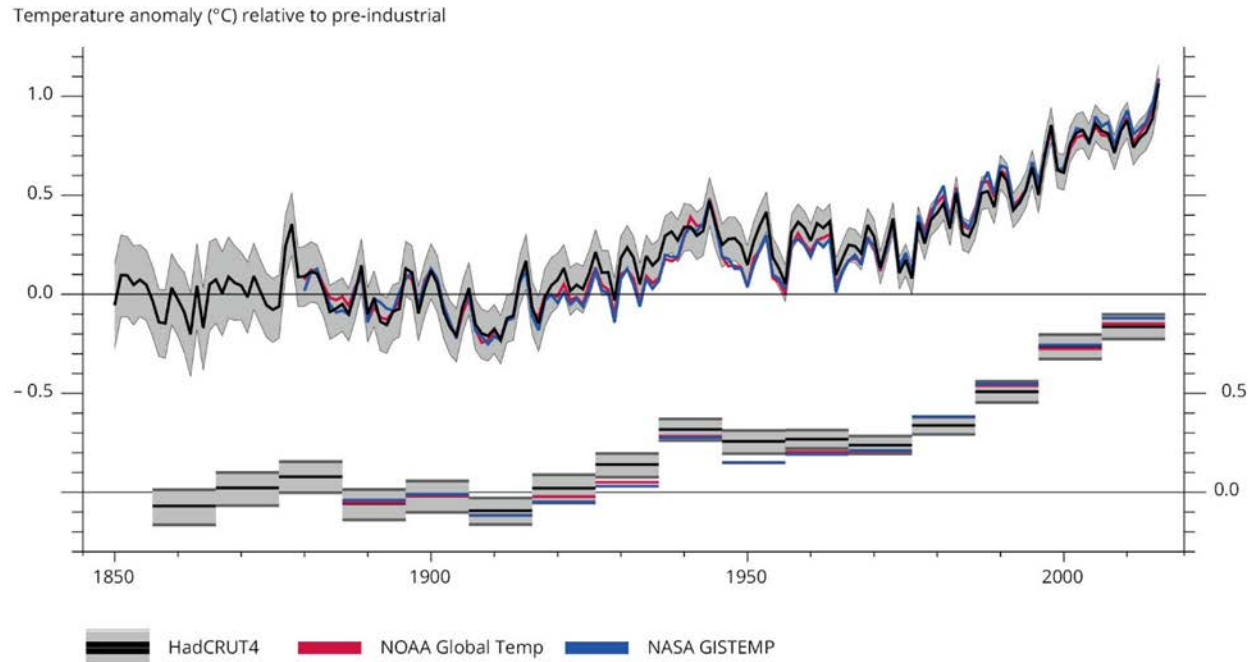
National Adaptation Framework

Planning for Climate Resilience

John O'Neill
DCCA

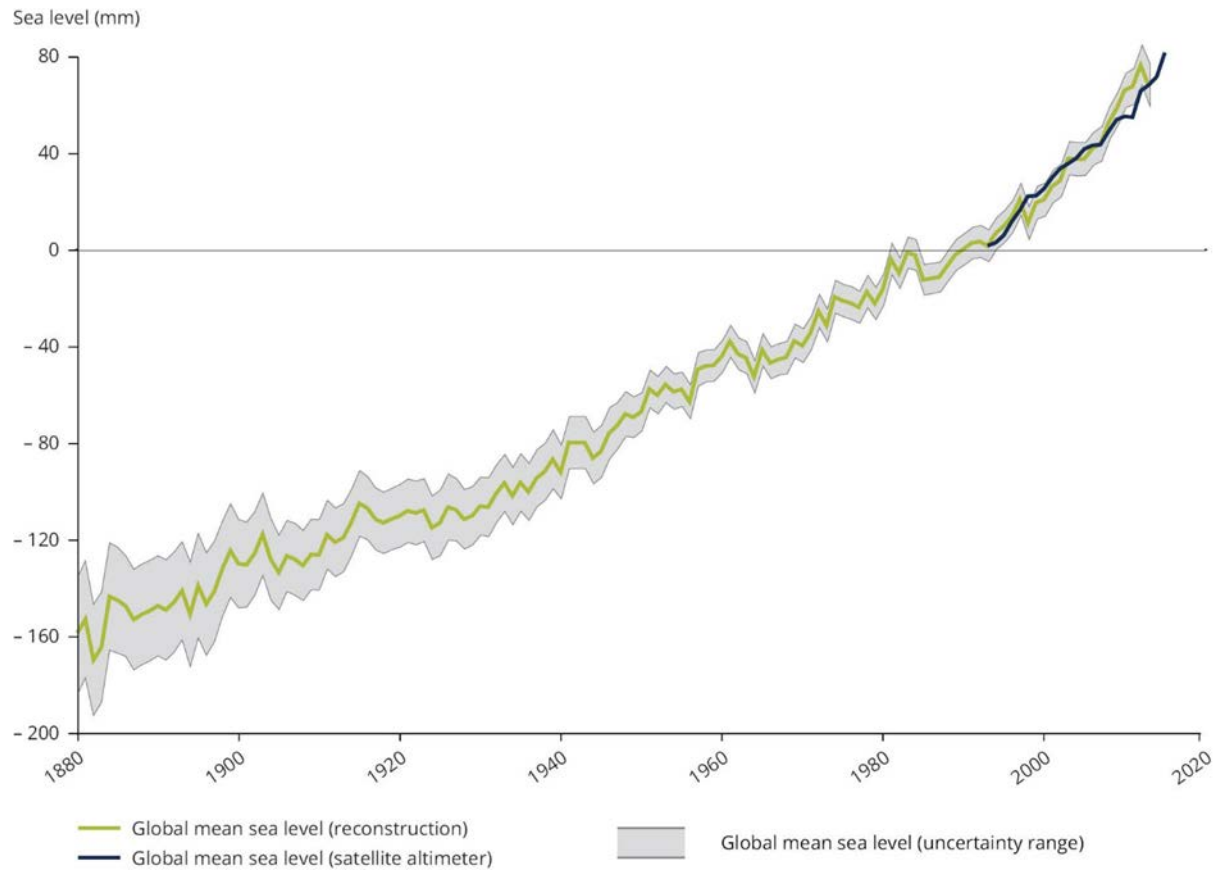


Global Temp – 1850-2015/16



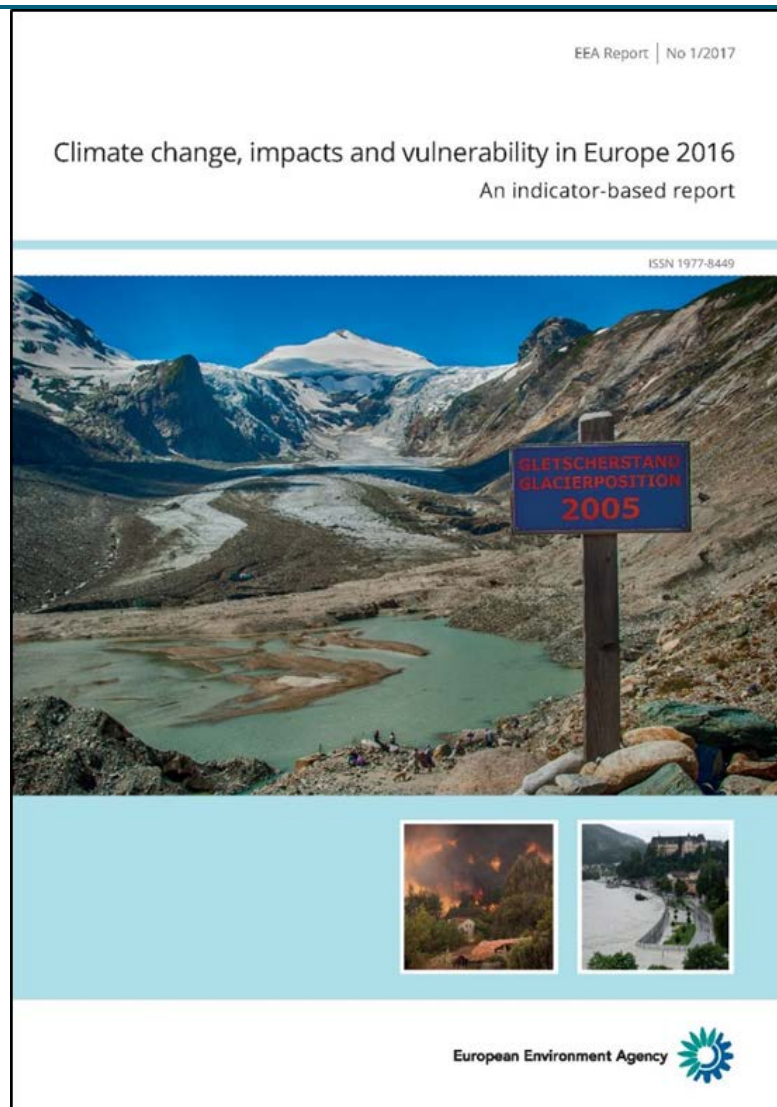
Source EEA

Global Sea Level Rise



EEA Report 2016

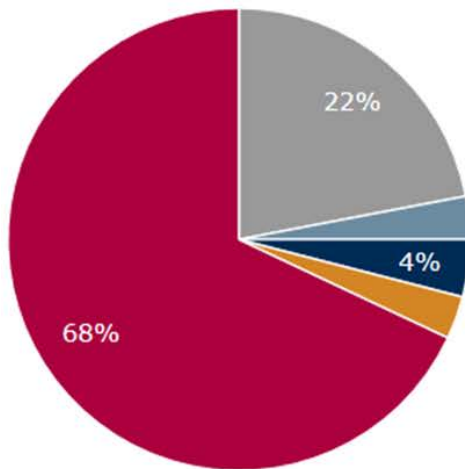
- **Observed changes in extreme weather events** (heavy precipitation)
- **Observed impacts to climate change** – disease outbreaks/invasive species etc.
- **Future increases of climatic hazards** – heat waves, droughts etc.



Impacts of extreme events – 1980-2015 (EEA)

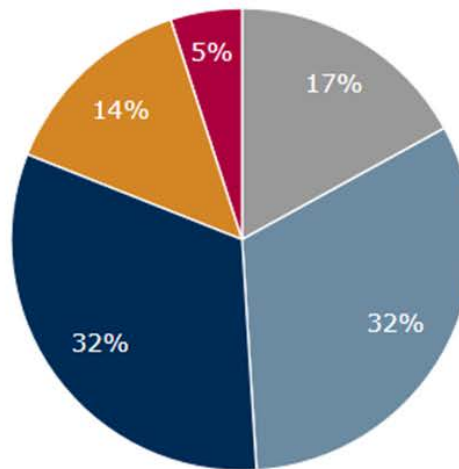
Fatalities

114 807



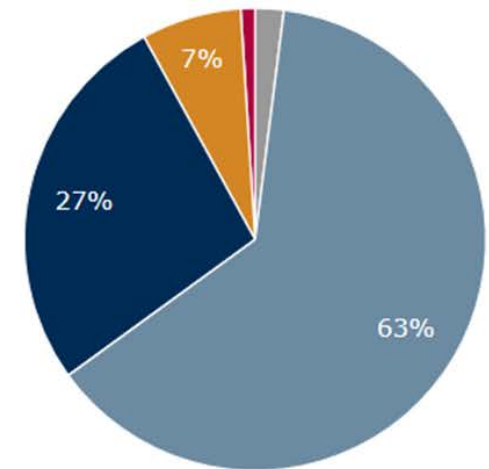
Total economic losses

EUR 520 billion (2015 prices)



Insured losses

EUR 155 billion (2015 prices)



● Geophysical events ● Meteorological events ● Hydrological events ● Climatological events ● Climatological event (heat wave)

Gulf Stream – Atlantic Ocean



Gulf Stream – Atlantic Ocean

- A potential tipping point
- Currents in the northern hemisphere
- Atlantic Meridional Overturning Circulation (AMOC)
- Weakened by 30% in the last 1600 years
- Greenland's ice sheet melting at least 450 years ago
- Where is the AMOC?
- Avoid disruption of the AMOC
- Severe Winters



in northern
(AMOC)
in the last 1600
stest rate for at

National Response...



Roinn Cumarsáide, Gníomhaíthe
ar son na hAeráide & Comhshaol
Department of Communications,
Climate Action & Environment

National Adaptation Framework

Planning for a Climate Resilient Ireland



National Response...



National Framework ...

- Overall Objective;
 - assess the key risks and vulnerabilities of climate change - local authorities/ regions/key sectors
 - implement climate resilience actions, and
 - ensure climate adaptation considerations are mainstreamed into all local, regional and national policy making

National Framework ...

- **Key Sectors**

- Agriculture, forestry and seafood
- Biodiversity, Built and Archaeological Heritage
- Transport infrastructure
- Electricity and Gas Networks/ Communications networks
- Flood Risk Management
- Water Quality & Water Services Infrastructure
- Health

- **Local Government**



National Framework ...

- Key Actions
 - Roll out of key Sectoral **Plans and Strategies**
 - Revised **governance and reporting**
 - Formalising the status of existing guidelines
 - Formalising long term operational support
 - Increasing **awareness**
 - **Integrating climate adaptation**
 - Establishment of regional climate action offices
- Key Supporting objectives

Key Challenges.....

- Policy Coherence
 - National Mitigation Plan
 - Cross sectoral coordination
 - National Planning Framework
 - National Development Plan
 - Natural Capital
 - Resource Efficient Economy
 - Sustainable Cities
 - Private Sector
 - Research
 - Short term versus long term?
 - **National Emergency Planning (DRR)**



Enabling the Framework ...

- Role of
 - **Local Government**
 - Spatial Planning – new National Framework
 - New National Development Plan
 - Private Sector
 - Research (coordination)
 - Civil Society

Key Actions – 4 & 6

Existing Guidelines



Roinn Cumarsáide, Gníomhaithe
ar son na hAeráide & Comhshaoil
Department of Communications,
Climate Action & Environment

Sectoral Planning Guidelines for Climate Change Adaptation

APRIL 2018



Report No. 164

Local Authority Adaptation Strategy Development Guideline

Author: Stefan Gray



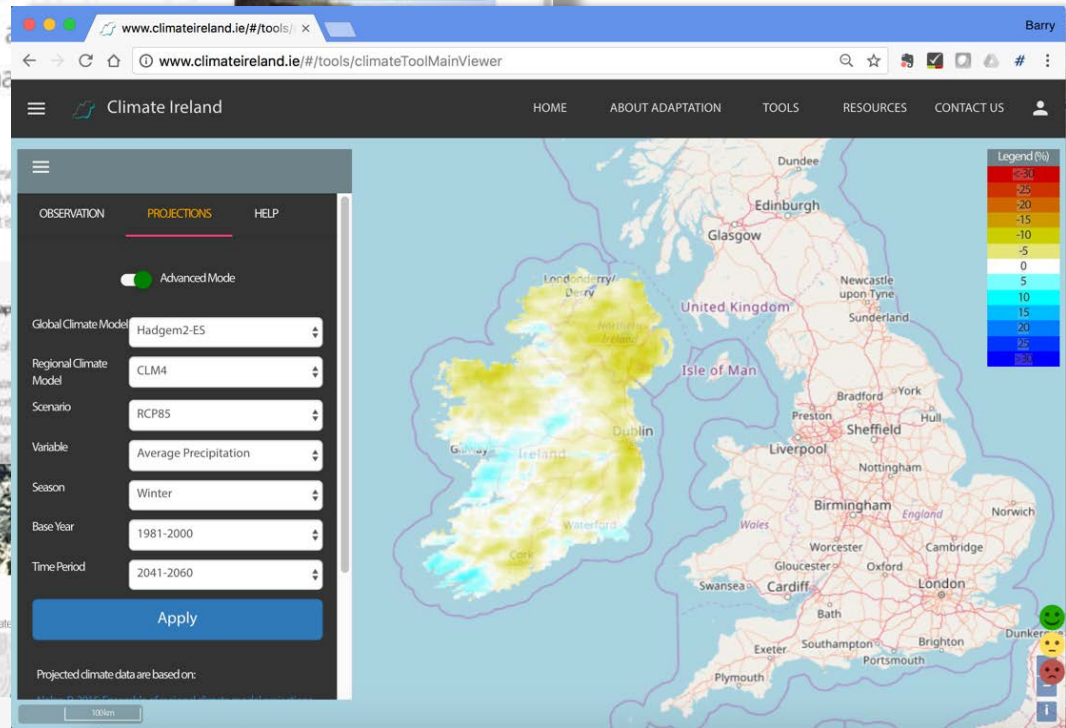
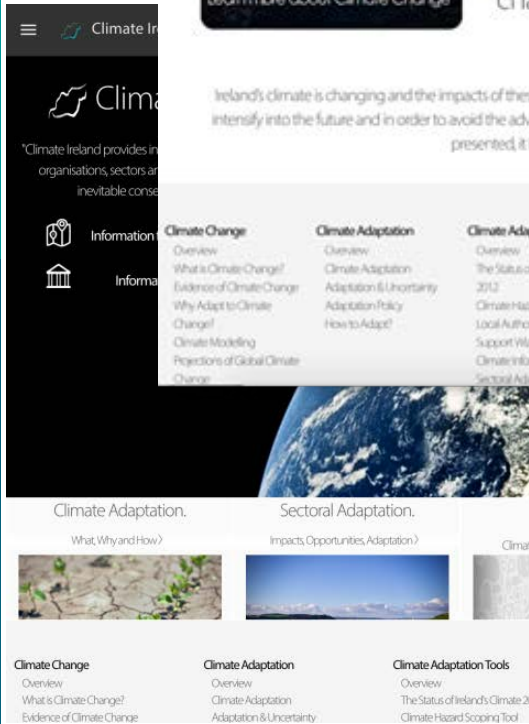
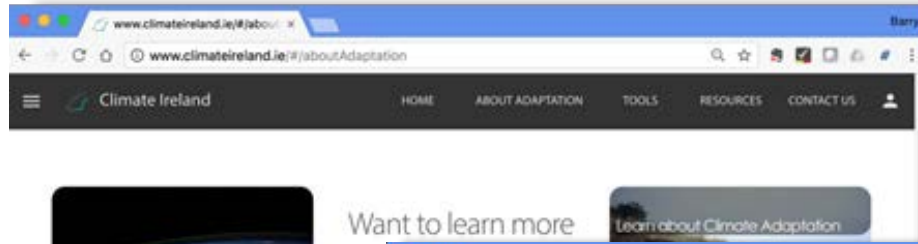
www.epa.ie

Key Actions – 7

Operational Support

Operational Support

Climate Ireland 



Key Actions – 8

Regional Climate Action Offices



Regional Climate Action Offices...

GEOGRAPHICAL AND TOPOGRAPHICAL RISK REGIONS



Region	Climate Risk
Atlantic Seaboard North	Coastal Flooding Storms Groundwater Flooding Rural Pluvial
Atlantic Seaboard South	Sea level Rise Coastal Flooding Storms Groundwater Flooding Rural Pluvial
Dublin Metropolitan	Urban Pluvial Urban Freezing Urban Heatwave
Eastern & Midlands	Fluvial Flooding Rural Pluvial Groundwater Flooding

Regional Climate Action Offices...

- Implement key actions under both the NAF/NMP
- Effective link with the new National Planning Framework
- Provides expertise and capacity at local/regional level
- Liaison with Central Government - focused and efficient
- Link with the work of the GTF on emergency planning
- Cost effective use of resources
- Develop more strategic links with other Regional Offices
- Role in public education and awareness initiatives
- Links to third level institutions - EU INTERREG/LIFE
- Opportunities for enterprise and local development
- Central role in facilitating the National Dialogue



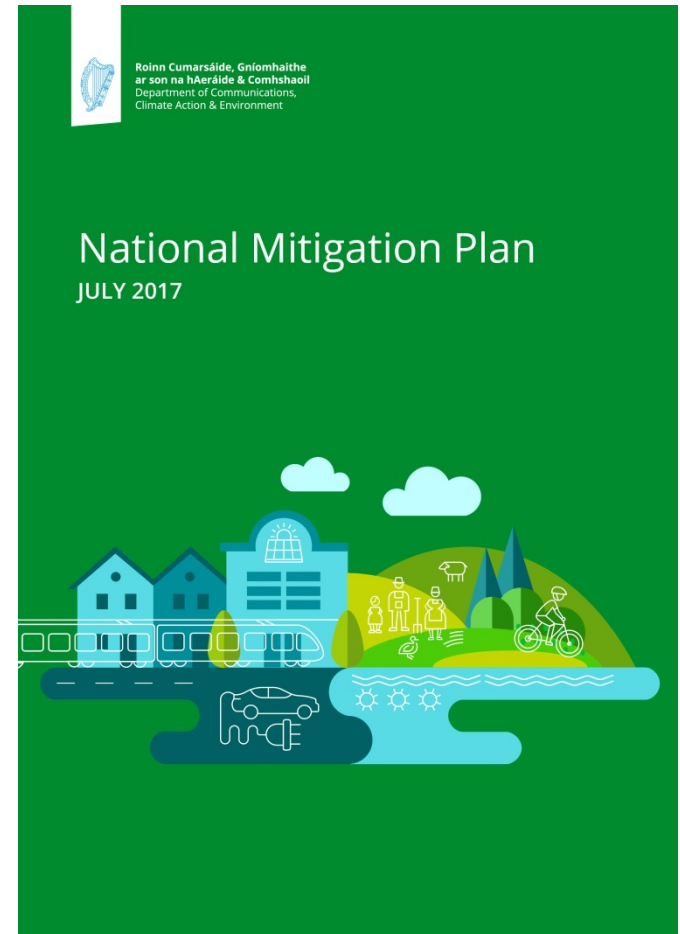
Key Supporting Objectives (NAF)

“Continue to avail of opportunities to collaborate with other jurisdictions to tackle common challenges on adaptation and resilience and to consider transboundary impacts and synergies when they arise”



Wider role...

- National Mitigation Plan
 - Energy Efficiency
 - Role of Energy Agencies
- Regional Assemblies
 - Regional and Spatial Economic Strategy (RSES)
- Covenant of Mayors
 - Energy and Climate Action
- Leadership



Progress and next steps...

- RCAOs announced Jan 18th
- SLAs signed
- Regional Leads Group
- Recruitment
- Governance
- Planning Teams
- Regional Template
- Preparation of Strategies
- Role of Third Level Partners
- Role within National Dialogue



Thank you.....

- Questions?

