



Environmental Services Training Group

Grúpa Traenála na Seirbhísí Chomhshaoil

Annual Conference 2018

***Preparation of Local Adaptation Plans &
Establishment of Local Offices***

25th April 2018

Louis Duffy, Director of Services, Cork County Council



Environmental Services Training Group

Grúpa Traenála na Seirbhísí Chomhshaoil

Climate Change – Its not new

Climate Change - *A change of climate which is attributed directly or indirectly to human activity that alters the composition of the global atmosphere and which is in addition to natural climate variability observed over comparable time periods.*

UNITED NATIONS FRAMEWORK CONVENTION ON CLIMATE CHANGE

– 1992.



Environmental Services Training Group

Grúpa Traenála na Seirbhísí Chomhshaoil

Climate Change

Not only is it real, it's here, and its effects are giving rise to a frighteningly new global phenomenon: the man-made natural disaster.

Barack Obama

April 3rd 2006



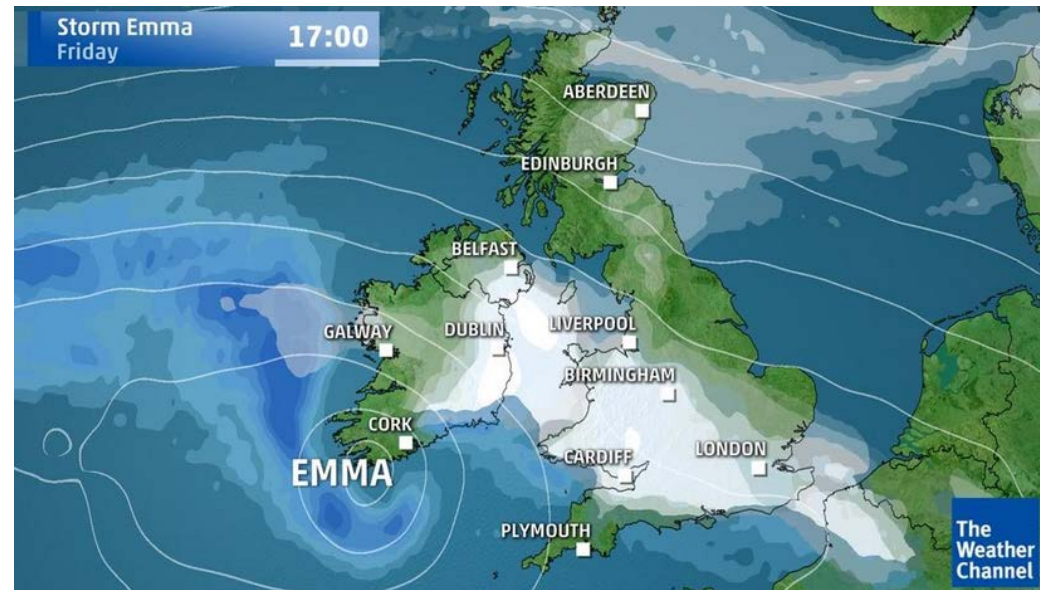
Donald J. Trump

@realDonaldTrump

Follow

In the East, it could be the COLDEST New Year's Eve on record. Perhaps we could use a little bit of that good old Global Warming that our Country, but not other countries, was going to pay TRILLIONS OF DOLLARS to protect against. Bundle up!

4:01 PM - 28 Dec 2017





Environmental Services Training Group

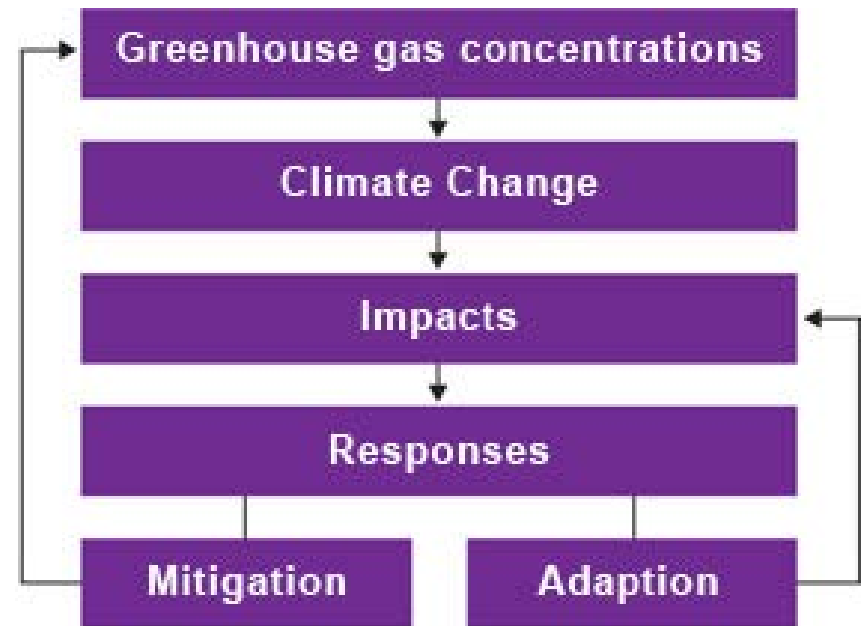
Grúpa Traenála na Seirbhísí Chomhshaoil

EPA climate change projections for Ireland (2050):

- **Surface air temperature** - Mean annual temperatures will increase by 1–1.6°C.
Hot days will get warmer by 0.7–2.6°C.
Cold nights will get warmer by 1.1–3.1°C.
Frost days number is projected to decrease by over 50%.
- **Growing season** length will increase by over 35 days per year
- **Rainfall:** more extreme events, more frequent very wet days in winter; decreases in rainfall during the spring and summer months
- **River flows:** winter 20% more, summer 40% less
- **Sea level rise:** increase in the range of 0.26m to 0.98m
- **Waves and sea surges:** magnitude and intensity of storm wave heights to increase for spring and winter
- **Wind speed:** Energy decrease 3% to 15%. during Spring, Summer & Autumn.
- **Storms:** lower frequency, higher intensity, with increased risk of damage.

Strategies to address climate change:

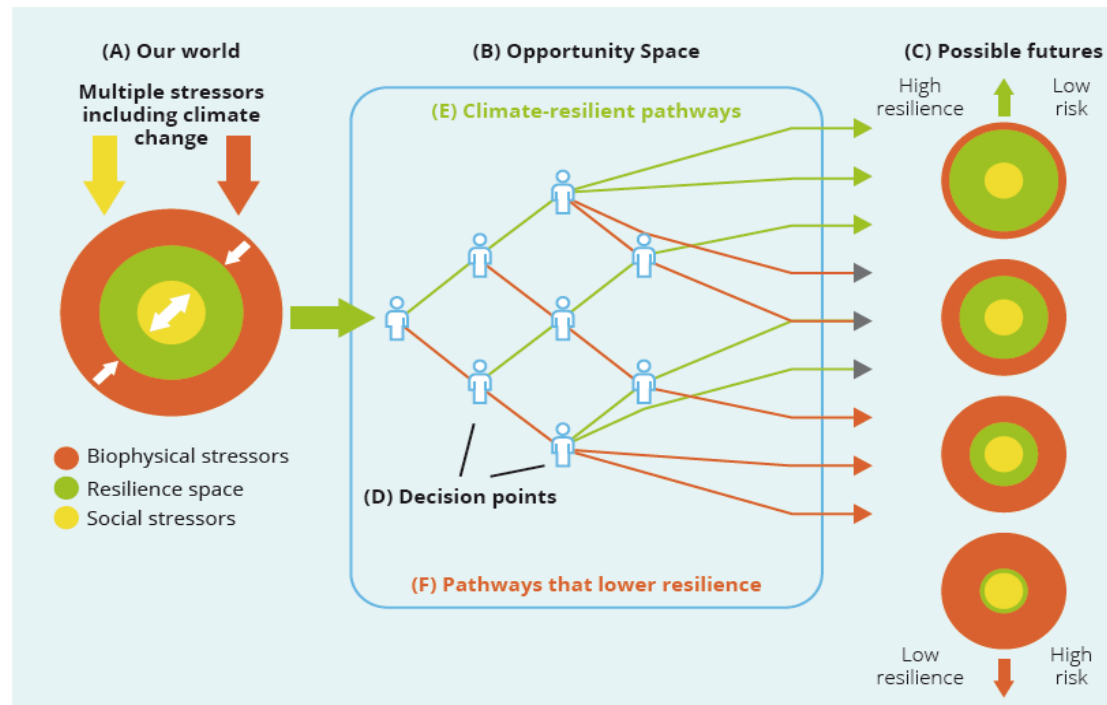
- **Mitigation** aims to reduce mans impact on climate change
- **Adaptation** aims to reduce the negative *impacts* of climate change or to take advantage of emerging opportunities



Climate Resilience

- The capacity of a system:
 - To respond to climate change
 - To reduce the negative climate impacts
 - take advantage of positive outcomes

Figure 3 Climate Resilient Pathways (IPCC, 2014)³⁹



The system can return to previous state or adapt to a new state

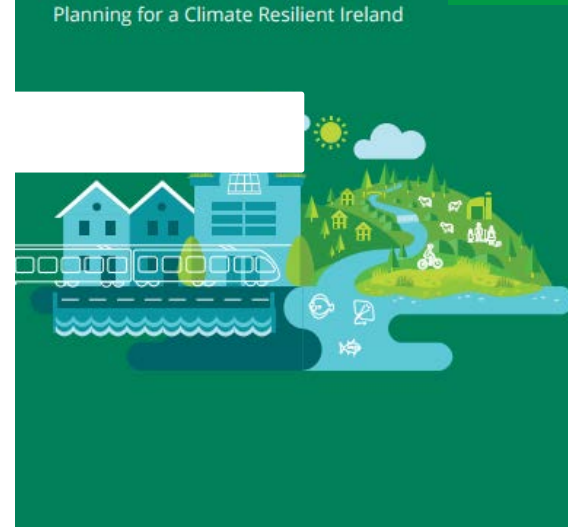
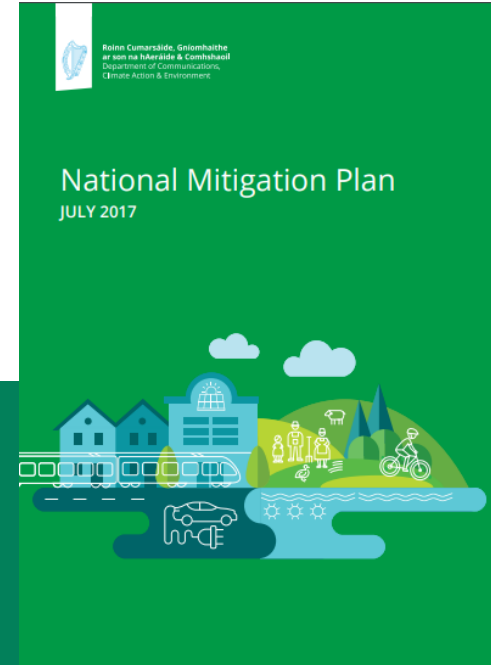


Environmental Services Training Group

Grúpa Traenála na Seirbhísí Chomhshaoil

Climate Action and Low Carbon Development Act 2015

- Legislative background
- Transition to
 - Low-carbon
 - Climate-resilient
 - Environmentally sustainable economy by 2050
- Basis for:
 - National Mitigation Plan
 - National Adaptation Framework



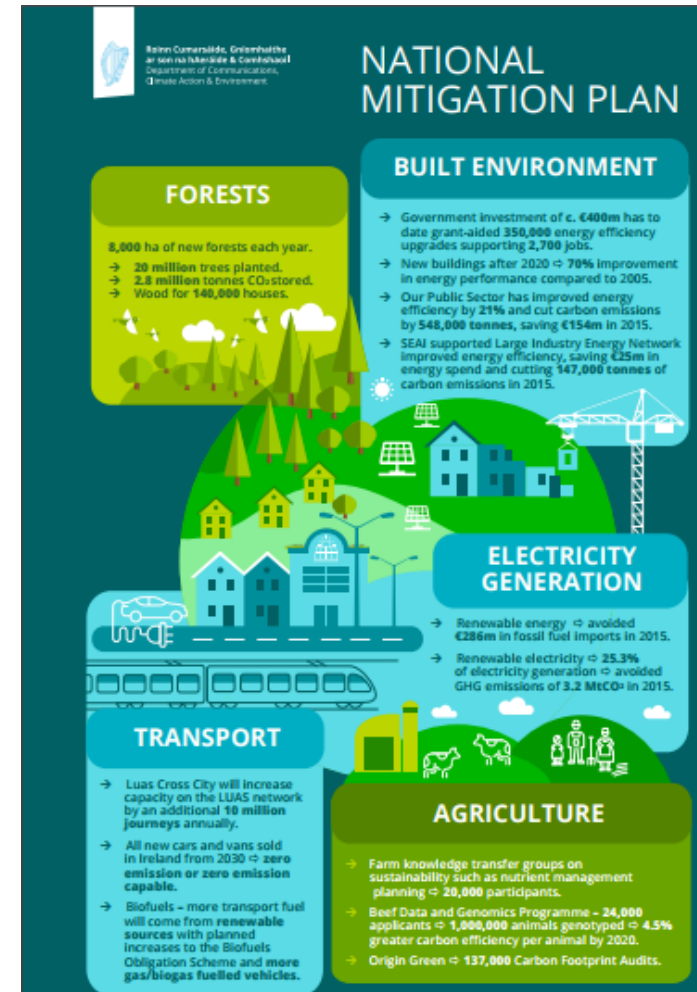


Environmental Services Training Group

Grúpa Traenála na Seirbhísí Chomhshaoil

National Mitigation Plan, July 2017

- Policy to manage GHG emissions:
 - Electricity generation
 - Built environment
 - Transport
 - Agriculture & forestry
- National and International targets
- 106 actions,
 - Local Authorities Lead one:
‘Establish regional climate action offices to coordinate Local Authority response’



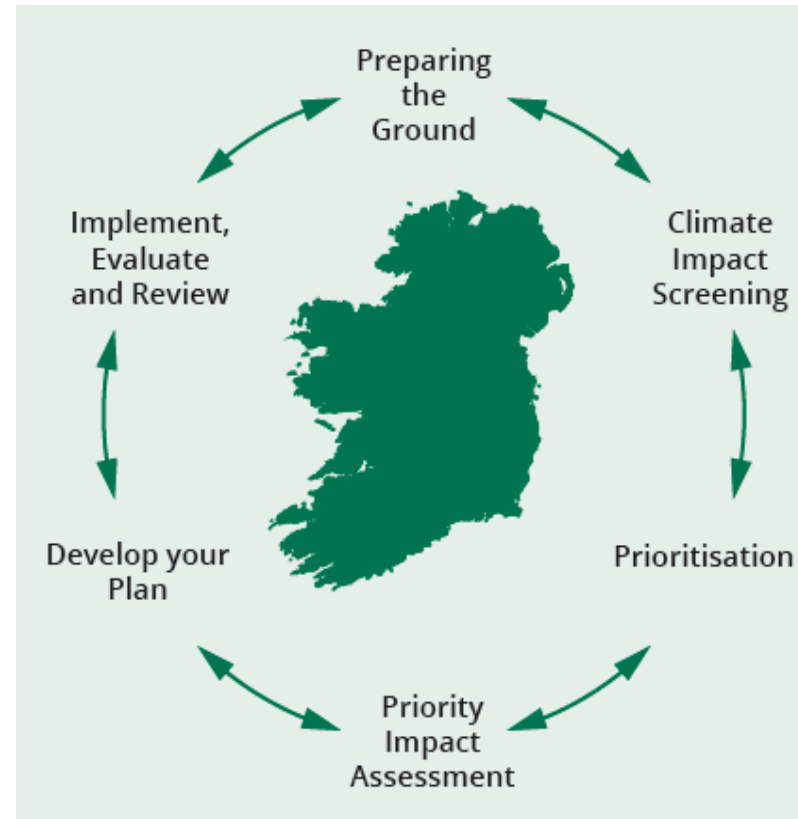


Environmental Services Training Group

Grúpa Traenála na Seirbhísí Chomhshaoil

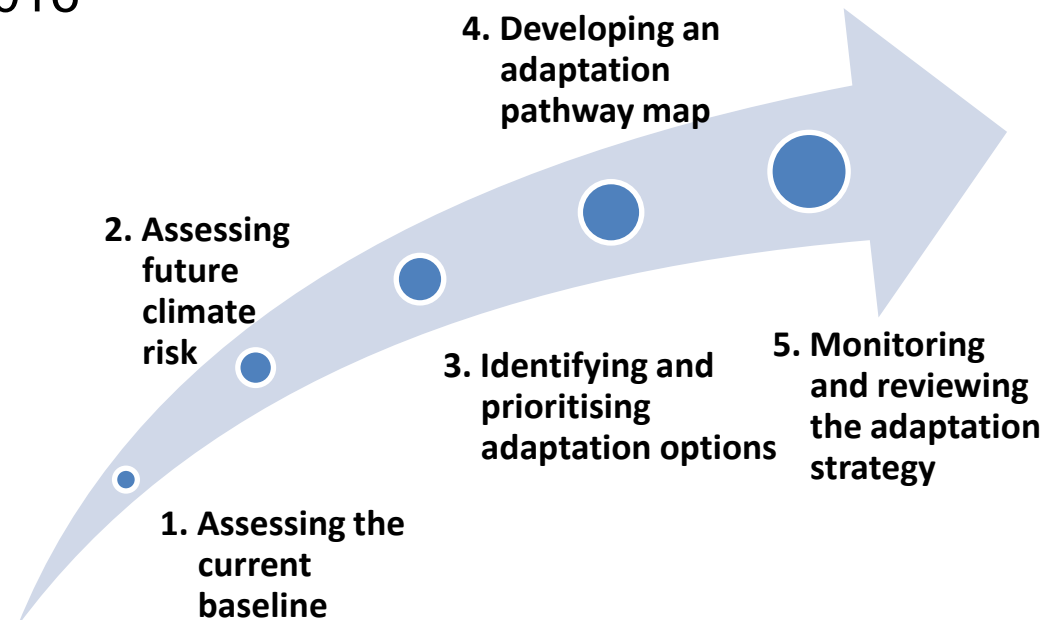
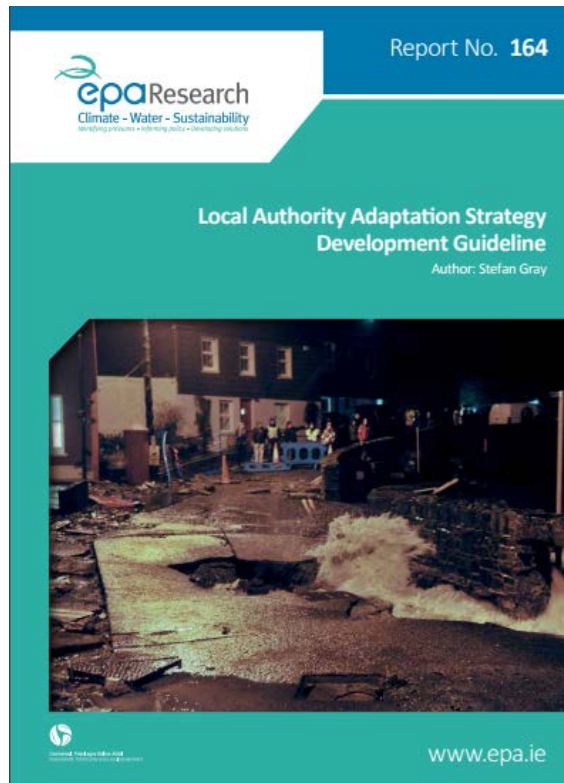
National Adaptation Framework January 2018

- Policy for strategic adaptation response to climate change
- 12 Actions identified, among them:
 - *Each local authority to make and adopt local adaptation strategies based on a regional governance approach to adaptation planning*
 - *Advance proposals to establish regional climate action offices to coordinate Local Authority response to climate change*



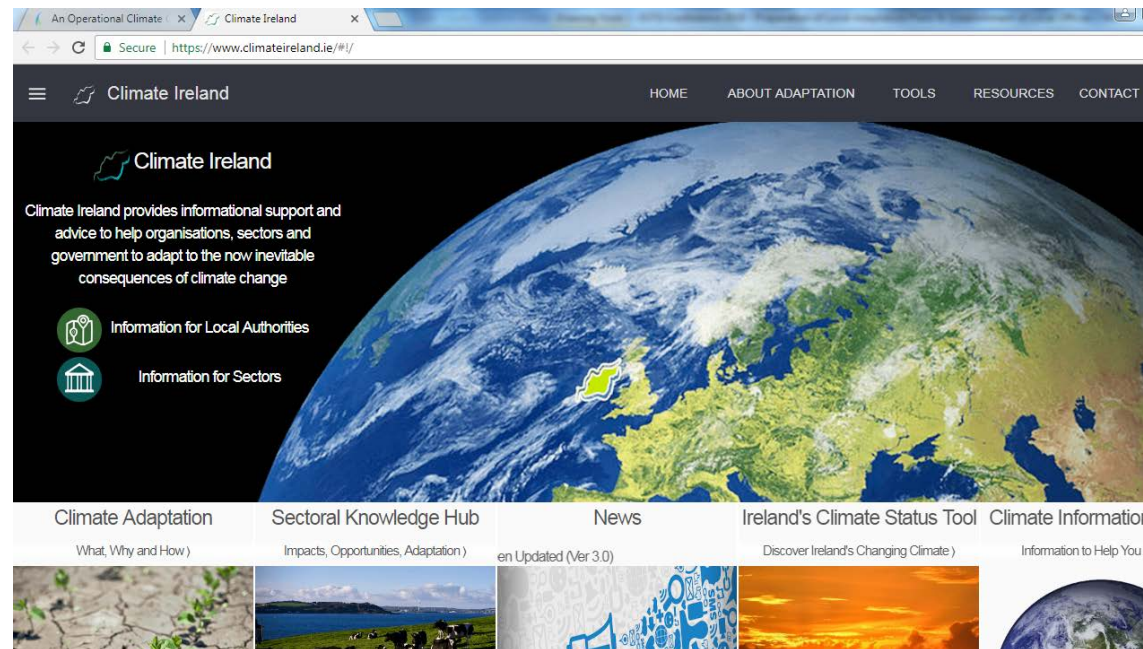
Local Adaptation Strategies – resources available

- EPA Guidelines published 2016
- 5 - step process



Local Adaptation Strategies – resources available

- **Climate Ireland** portal - Developed by MarEI / UCC to provide a source of climate change information and its impacts on Ireland.
- **Tools** for global and national climate data and projections
- **Information** on climate adaptation policy
- **Case studies**





Environmental Services Training Group

Grúpa Traenála na Seirbhísí Chomhshaoil

Need for Shared Service

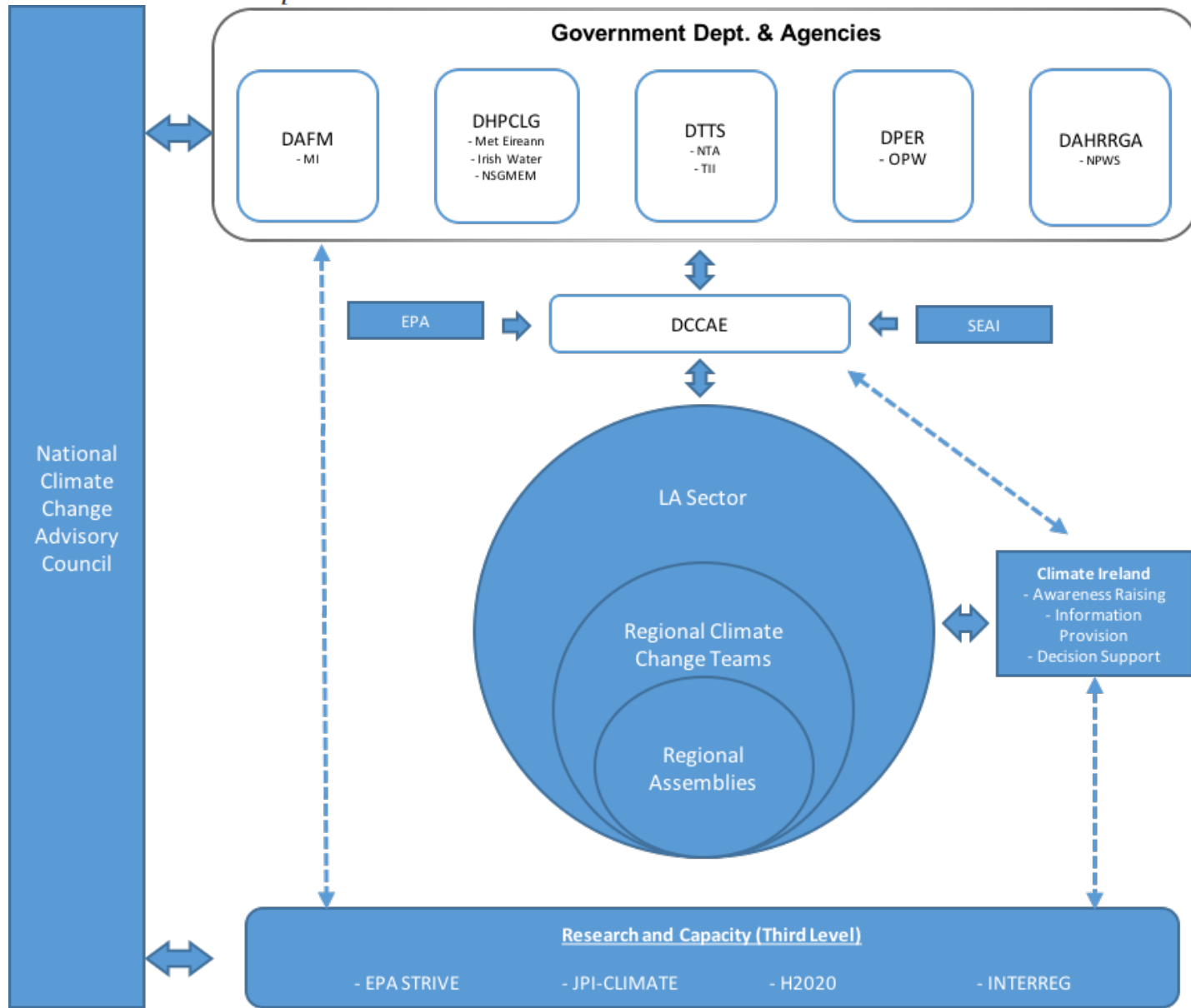
- Coordinated National Approach for development of Climate Change Plans
- Reporting and Governance at Regional, National and International levels.
- Facilitate Community attitudinal and behavioural change
- Foster interagency collaboration and support
- Address identified weaknesses in the sector
- Advance mitigation and adaptation in regions with common risks.



Environmental Services Training Group

Grúpa Traenála na Seirbhísí Chomhshaoil

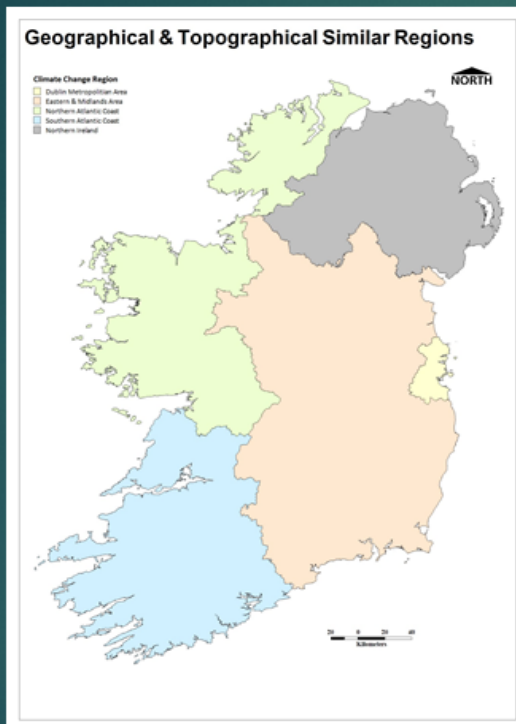
Climate Change: Role of Local Authorities



Regional Climate Action Offices Business Case

- 4 geographical/topographical regions, based on climate risk

GEOGRAPHICAL AND TOPOGRAPHICAL RISK REGIONS



Region	Climate Risk
Atlantic Seaboard North	Coastal Flooding Storms Groundwater Flooding Rural Pluvial
Atlantic Seaboard South	Sea level Rise Coastal Flooding Storms Groundwater Flooding Rural Pluvial
Dublin Metropolitan	Urban Pluvial Urban Freezing Urban Heatwave
Eastern & Midlands	Fluvial Flooding Rural Pluvial Groundwater Flooding



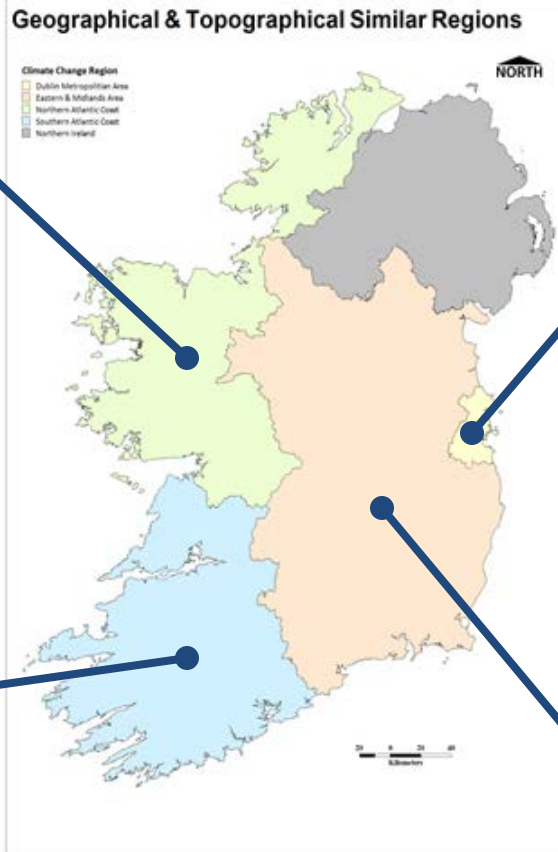
Environmental Services Training Group

Grúpa Traenála na Seirbhísí Chomhshaoil

Regional Climate Action Offices

Atlantic Seaboard North

Mayo County Council



Dublin Metropolitan

Dublin City Council



Dún Laoghaire-Rathdown



Fingal County Council



South Dublin County Council



Atlantic Seaboard South

Cork County Council



Eastern & Midlands

Kildare County Council



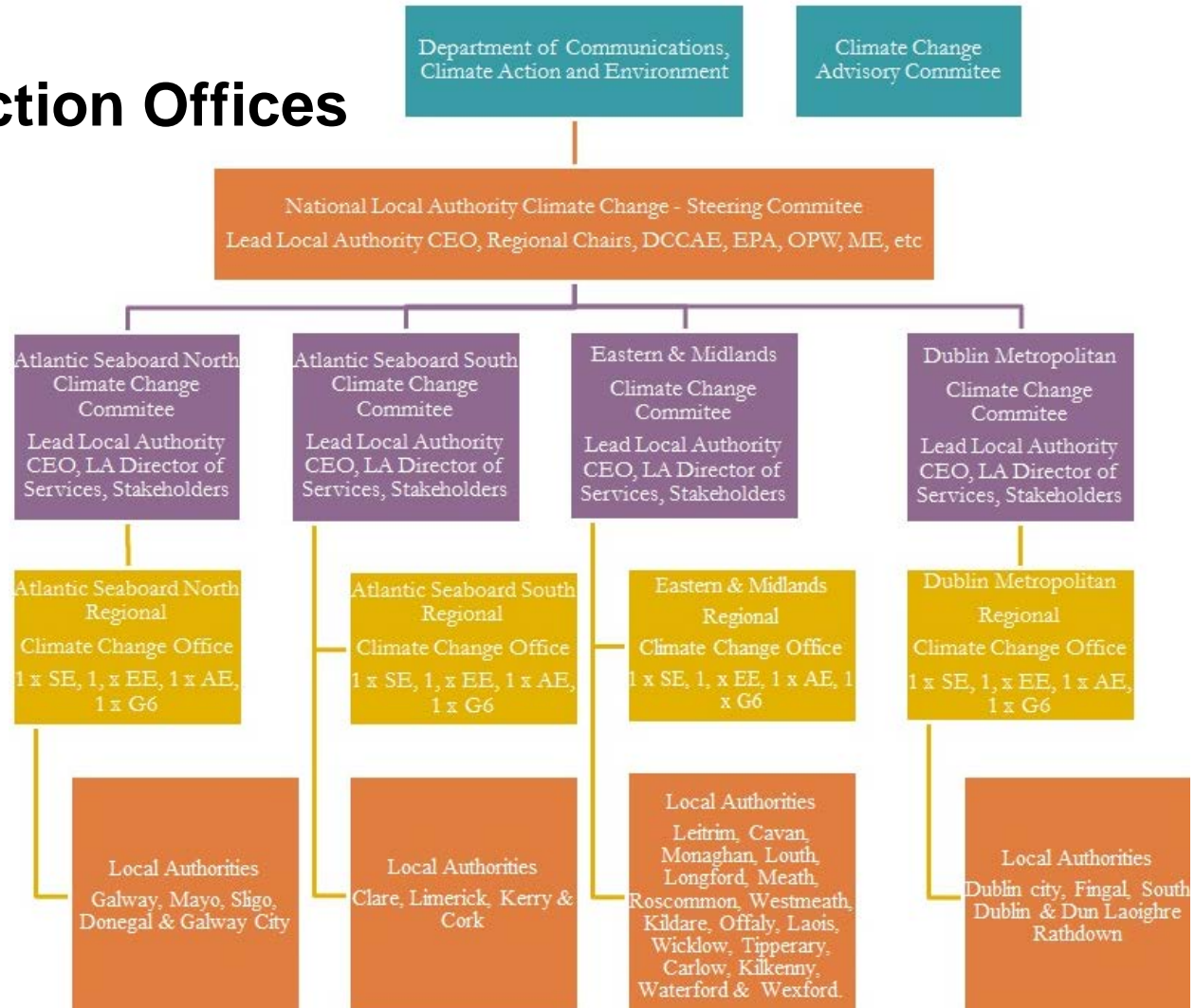


Environmental Services Training Group

Grúpa Traenála na Seirbhísí Chomhshaoil

Regional Climate Action Offices

- January 2018, €10 million in funding over 5 years announced for Regional offices
- Service Level Agreements with DCCAE.
- Governance structure being put in place





Environmental Services Training Group

Grúpa Traenála na Seirbhísí Chomhshaoil

Climate Action Regional Offices - Next steps

- Staff recruitment - Staff of 4 reporting to DoS Environment
- Initial tasks of CAROs –
 - *‘Formulation of Regional Adaptation Plan Templates*
 - *Advising local authorities on the formulation and implementation of individual Local Plans’*
- Regional climate action training to LA staff by MaREI In May/June 2018
 - Awareness at Senior Management Level
 - Establishment of Baseline Information in Local Authorities
 - Managing Adaptation and resourcing for the future
 - Asset Management
 - Environment, Roads, Housing, Water Services, Community Development, Economic Development.....



Environmental Services Training Group

Grúpa Traenála na Seirbhísí Chomhshaoil



Thank You