



Comhshaol, Pobal agus Rialtas Áitiúil
Environment, Community and Local Government

Environmental Services Training Group

LOCAL AUTHORITY ENVIRONMENT CONFERENCE
2017

Protecting the Environment for Future
Generations

Minella Hotel, Clonmel Wednesday 24th. May 2017.

Protecting the Environment for Future Generations

Waste Infrastructure

Philippa King

Southern Region Waste Management Plan-
Coordinator

SRWMO



Comhshaol, Pobal agus Rialtas Áitiúil
Environment, Community and Local Government

Outline of Presentation

- ❑ Waste Management Plans/Infrastructure
- ❑ Recycling Infrastructure
- ❑ Local Authority Recycling Infrastructure
- ❑ Biological Treatment
- ❑ Thermal Recovery
- ❑ Landfill
- ❑ Waste Statistics
- ❑ Waste Infrastructure Issues

Waste Management Plans 2015-2021



southern waste region

**Southern Region
Waste Management Plan 2015 - 2021**



do one more thing

www.southernwasteregion.ie



connacht-ulster waste region

**Connacht - Ulster Region
Waste Management Plan 2015 - 2021**



the next challenge

www.curwmo.ie



eastern-midlands waste region

**Eastern - Midlands Region
Waste Management Plan 2015 - 2021**



new region new vision

www.emwr.ie

OVERALL PERFORMANCE TARGET

Prevention Target

Plan Target

1% reduction per annum in the quantity of household waste generated per capita over the period of the plan

Recycling Target

Plan Target

Achieve a Rate of
Recycling of 50% of
Managed Municipal
Waste by 2020

Landfill Target

Plan Target

Reduce to 0% the direct disposal of unprocessed residual municipal waste to landfill (from 2016 onwards) in favour of higher value pre-treatment processes and indigenous recovery practices

Waste Management Plan & Infrastructure

- 29 Policy Statements
- Aimed at planners and policy makers
- Facilities they cover
 - Pre-Treatment
 - Bring Infrastructure
 - Landfill Capacity
 - Thermal Recovery
 - Biological Treatment
 - Construction & Demolition
 - Reprocessing/Repair/Reuse

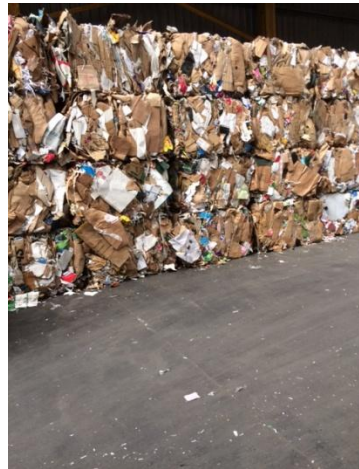
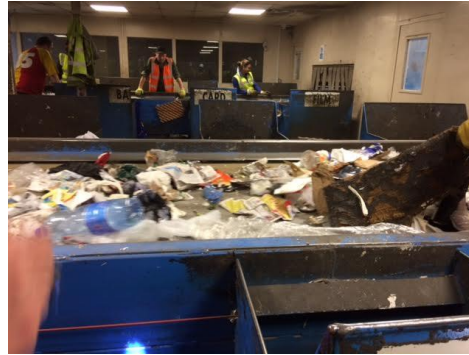
Waste Management Plan & Infrastructure

- General Environment Criteria
- Criteria for European Sites
 - Intended as a starting point for planning waste facilities
 - Intended to protect European Sites-
Achievement of the conservation objectives of sites afforded protection under the EU Habitats and Birds Directives.

Recycling Infrastructure

- Policy Statement E1 & E2
 - Improve quality and add value to the output materials generated on site.
 - 6 Major Facilities > 15,000 Tonnes per year
 - AES-Tullamore
 - Barna Waste
 - Quality Recycling
 - Country Clean
 - Panda Ballymount/Panda Cappa

Materials Recovery Facility



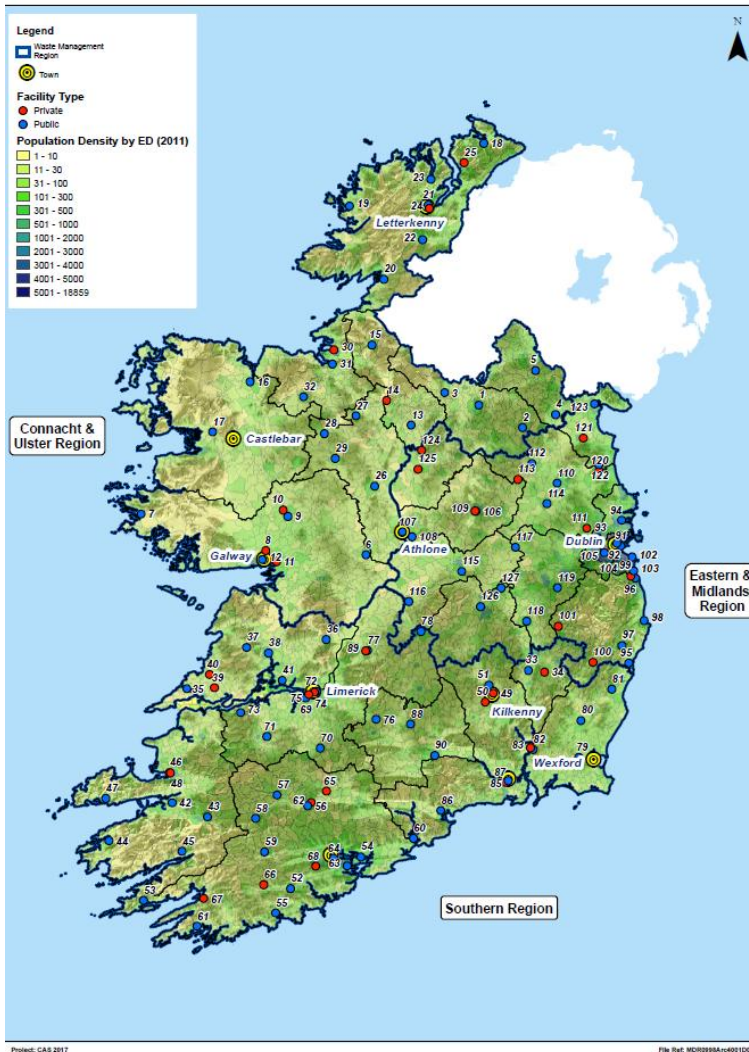
Material Recovery Facility

- ❑ Manual Sorting
- ❑ Magnetic Sorting
- ❑ Eddy Currents
- ❑ Optical Separators
- ❑ Crushers
- ❑ Balers

Commercial Recycling Facility

- Greenstar x 2
- Panda
- Dillon Waste
- Clonmel Waste

Local Authority Recycling Facilities



Legend

Waste Management Region

Town

Facility Type

Private

Public

Population Density by ED (2011)

1 - 10

11 - 30

31 - 100

101 - 300

301 - 500

501 - 1000

1001 - 2000

2001 - 3000

3001 - 4000

4001 - 5000

5001 - 18859

EMR 26 public & 11 private
 SR 39 public & 17 private
 CUR 25 public & 7 private



Bring Banks -1848 BB in the three Regions

- Rebranding of Bring Banks-1848 BB in the three Regions



Biological Treatment

- **Policy E17/E18**
- Anaerobic Digestion
- Composting
 - In-vessel composting
 - Open Windrows
- Waste Accepted
 - Food Waste
 - Farm Wastes
 - Green Waste
 - Biostabilised Fines
 - Sewage Sludges

Biological Treatment Facilities

Source: Biogas plant McDowell Farms Limited, Primary digester and first covered storage digester



the EPA will also be required depending on the scale of the

commence. It is also time to apply for the Renewable Energy Feed

to produce electricity, while he would also end up with a higher



Big Names in Ad/Composting- MSW

- Enrich Ltd
- Thorntons
- Panda
- Greenstar
- AES
- Greengas
- Evirogrind

Municipal Recycling Rate



Thermal Recovery

- ❑ **Policies E15a/E15b/E16**
- ❑ Limit of 300,000T of additional thermal recovery for MSW residual
- ❑ No Limit on Industrial on-site Thermal Recovery
- ❑ Limit of 50,000T of additional Thermal Recovery for Hazardous Waste.

Thermal Recovery

- ❑ Waste to Energy Incineration
- ❑ Pyrolysis Facility
- ❑ Gasification Facility
- ❑ Co-incineration at Cement Kilns

Thermal Recovery Facilities



Big Names in Thermal Recovery

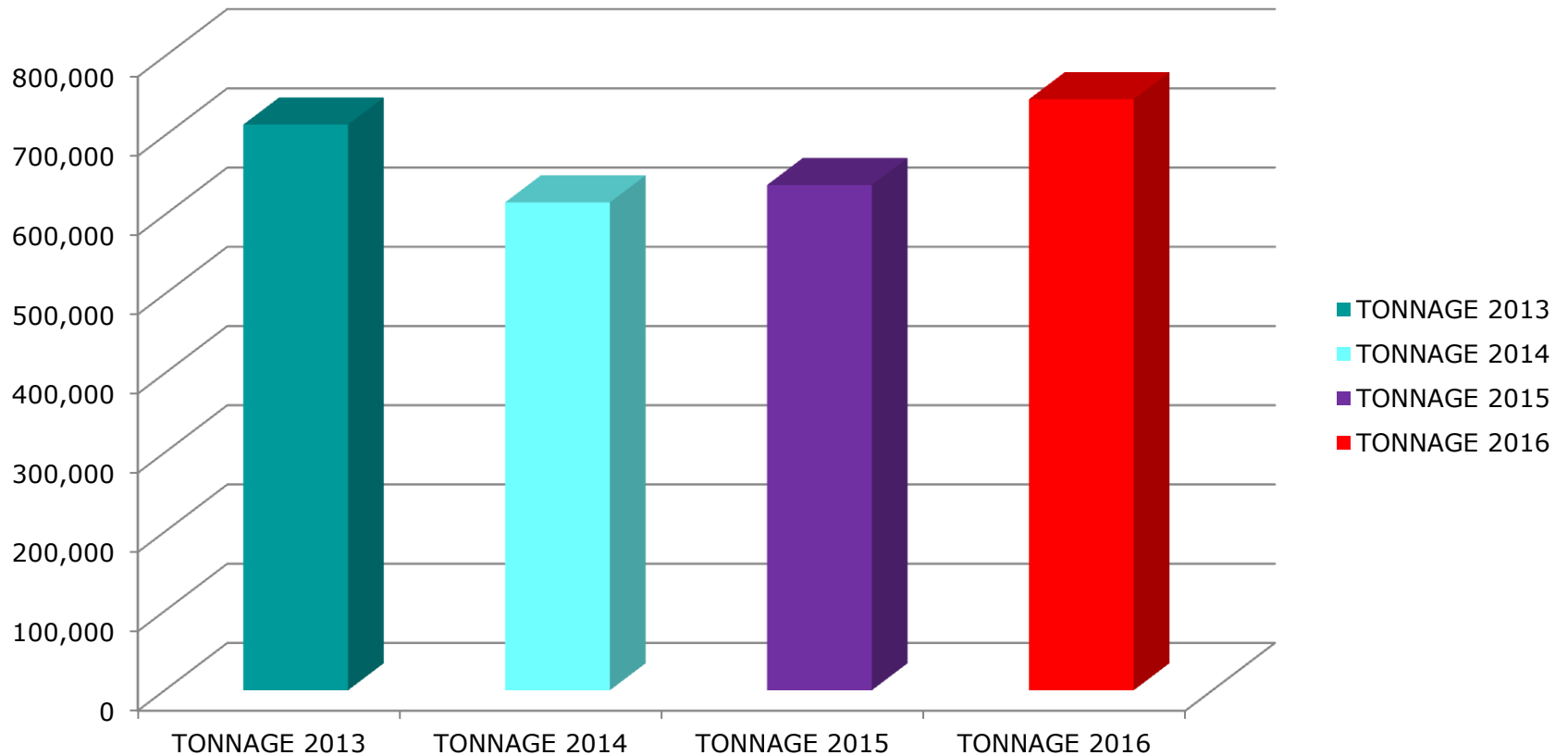
- ❑ Indaver Meath + Cork
- ❑ Covanta-Poolbeg
- ❑ Irish Cement Meath & Limerick
- ❑ Quinn Cement
- ❑ Lagan Cement
- ❑ Glanpower- pyrolysis plant with planning and licence but not yet built
- ❑ Cadence Enviro-power

Remaining Landfills

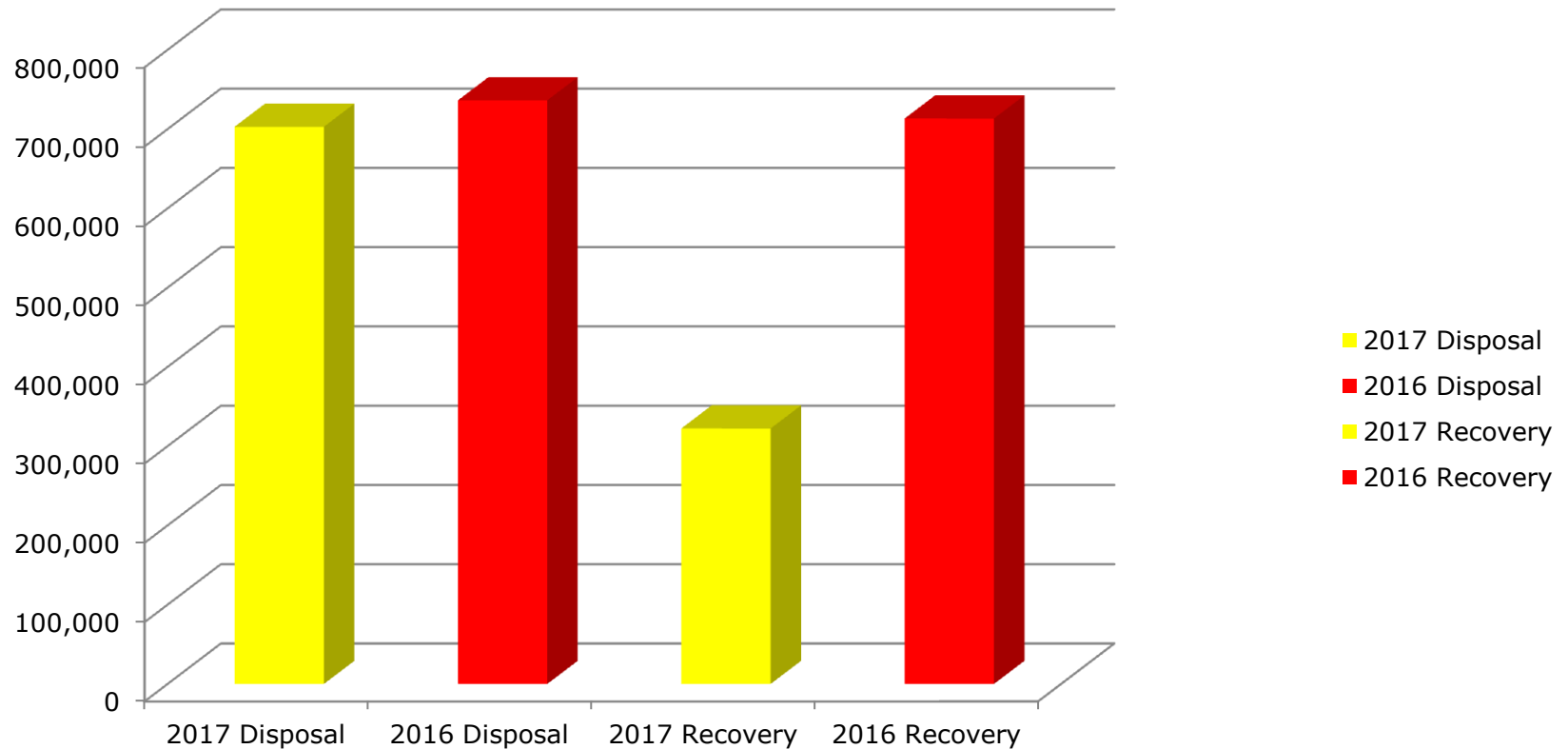
Landfill Name	Landfill Acceptance 2017				
	LimitVoid Space Licence Limit	Q1 Void Space Used	Q2-Q4 Tonnage Available	Tonnage per Quarter	% Void Space remaining
Wicklow	150,000	69,730	80,270	26,757	0.54
Meath	88,000	43,603	44,397	14,799	0.50
Kildare	360,000	91,565	268,435	89,478	0.75
Carlow	10,000	6,791	3,209	1,070	0.32
Galway	100,000	23,486	76,514	25,505	0.77
TOTAL	708,000	235,175	472,825	157,608	0.67

Landfill Tonnage 2013-2016

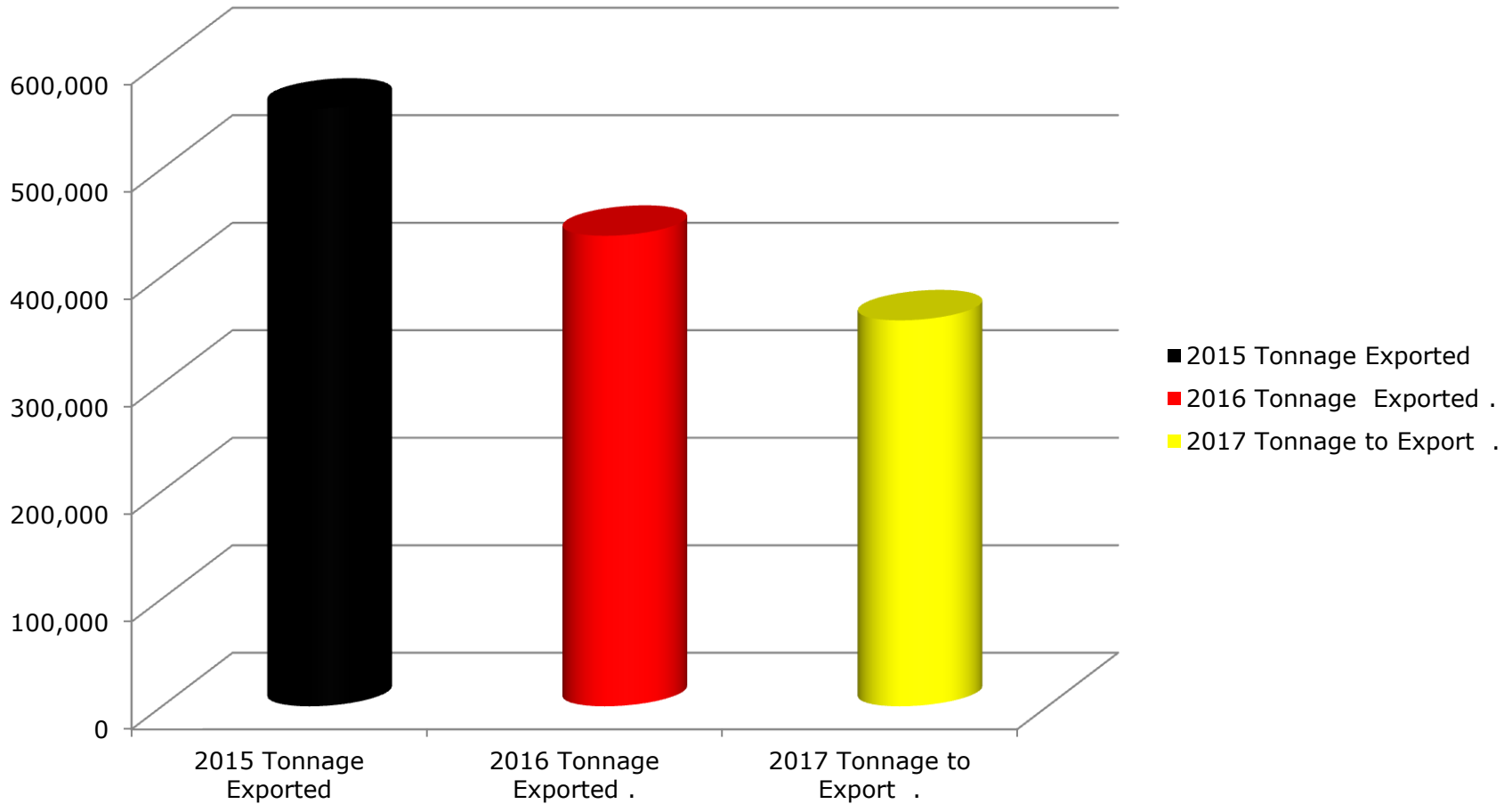
Landfill-Residual Waste



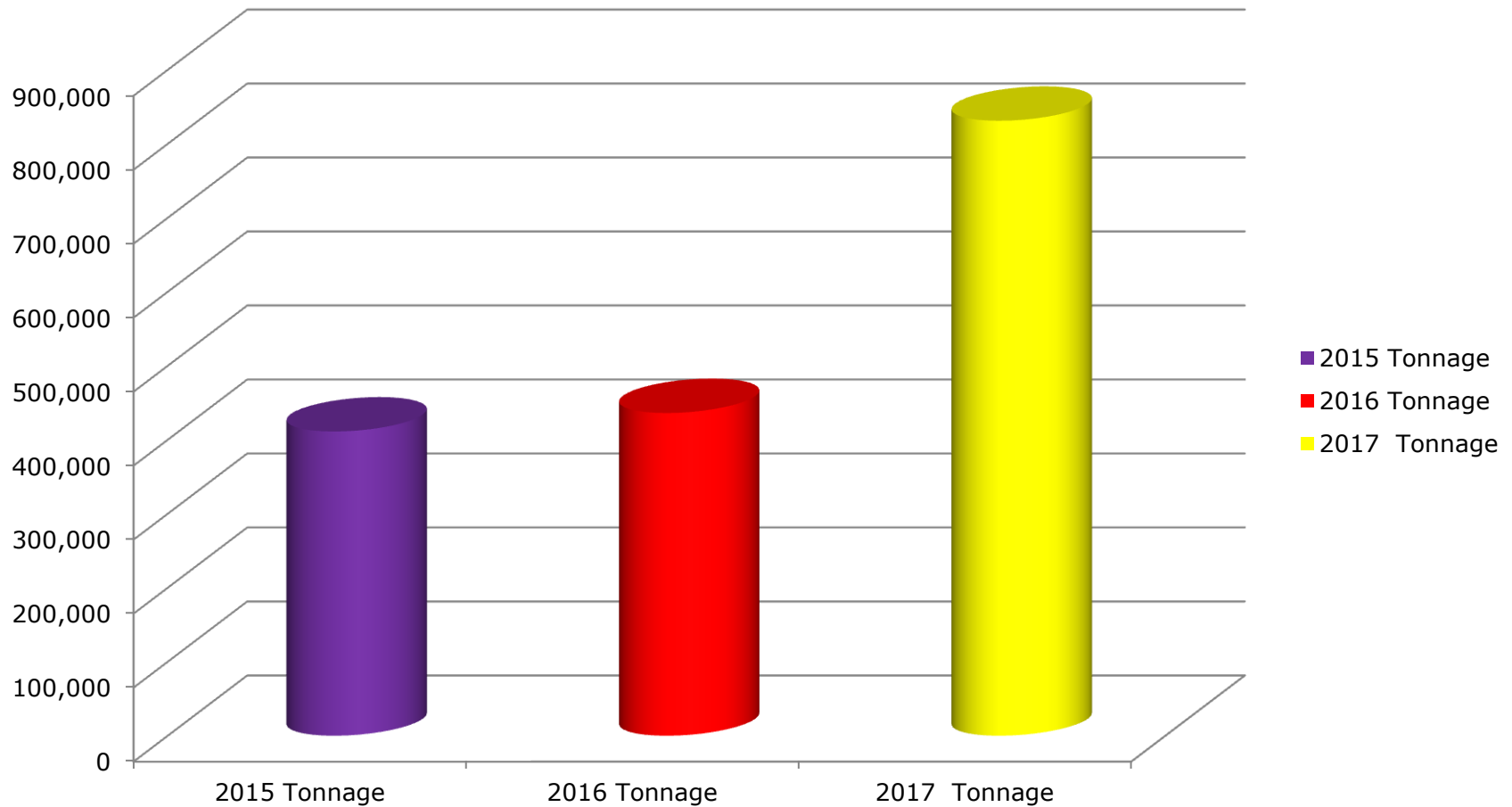
Landfill 2016-2017



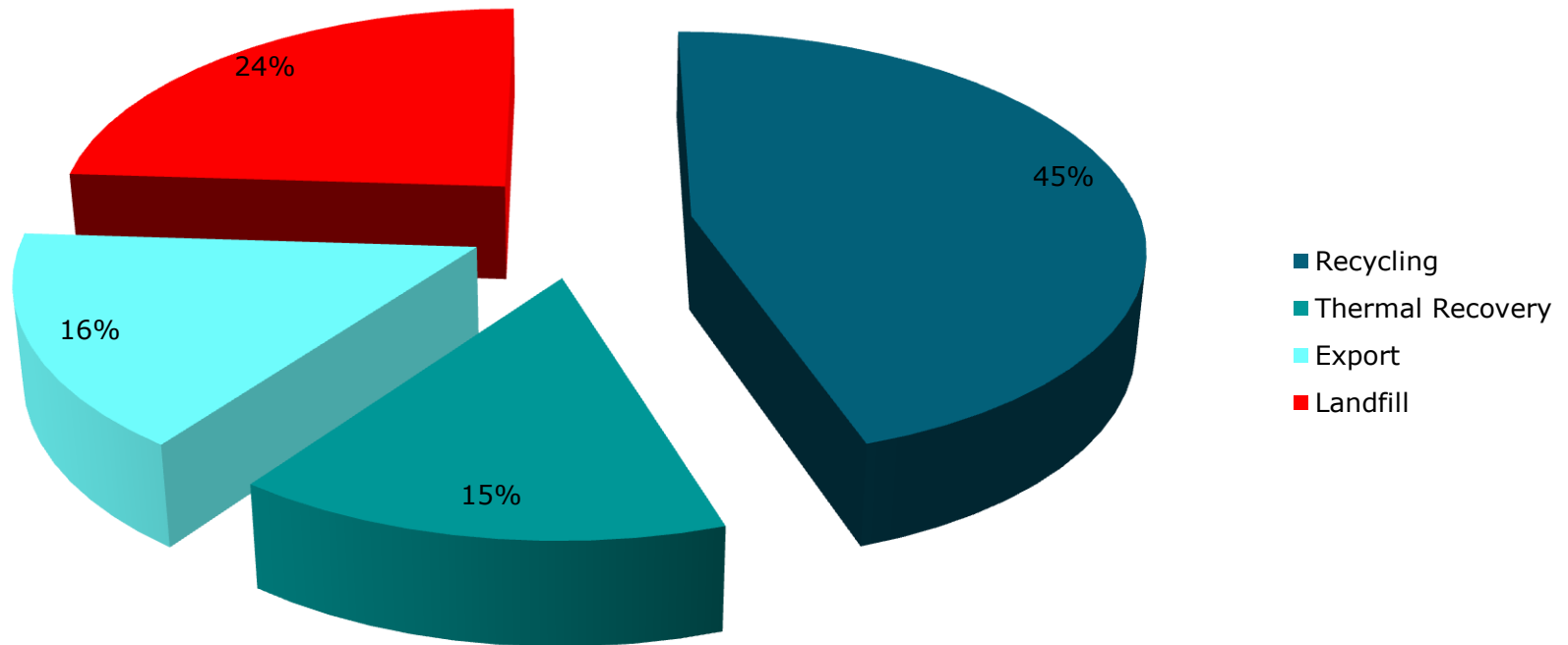
Export 2015-2017



Residual MSW to Thermal Recovery



Breakdown of MSW Treatment



Construction & Demolition Waste

- **Policy Statements E13/E14**
- Infilling
- Other Recovery/Reuse Activities
 - Asphalt Recycling
 - Aggregate production
- Big Names in Soil & Stone
 - Murphys
 - Roadstone
 - KT Sand & Gravel
 - N & C Enterprises
 - AGB Holdings Landfills-Ballynagran & Knockarley
 - Bord Na Mona Landfill-Drehid

C&D processing



C&D Report

Construction & Demolition Waste

Soil and Stone Recovery / Disposal Capacity

Eastern Midlands Region / Connacht Ulster Region / Southern Region
Waste Management Plans 2015 - 2021






Siting Guidelines being Developed

□ **Policy G3.1**

- Guideline Setback Distances Between Principal Processing Area of the Facility and Residents
- Guideline Setback Distances Between Principal Processing Area of the Facility and Business/Industry
- Guideline Distance from National Road Network.

Traffic Lights System

- The suitability of lands for the development of each waste activity is also covered in the table. The land classification options include urban, rural or industrial. A traffic light system is applied to indicate the suitability of the lands as follows:

- Location is favourable for this facility type; 
- Location requires consideration for this facility type; 
- Location may be a significant obstacle for this facility type; 

Waste Infrastructure Issues

2017/2018

- ❑ Waste Acceptance at Covanta
- ❑ Landfill Capacity & Contingency Landfill
- ❑ Secure Export Outlets
- ❑ Bio-stabilised Waste outlets
- ❑ Construction & Demolition Waste outlets
- ❑ Planning Decisions
- ❑ National Policy Decisions

More Information

- www.southernwasteregion.ie
- www.emwr.ie
- <http://www.curwmo.ie>

THANK YOU

