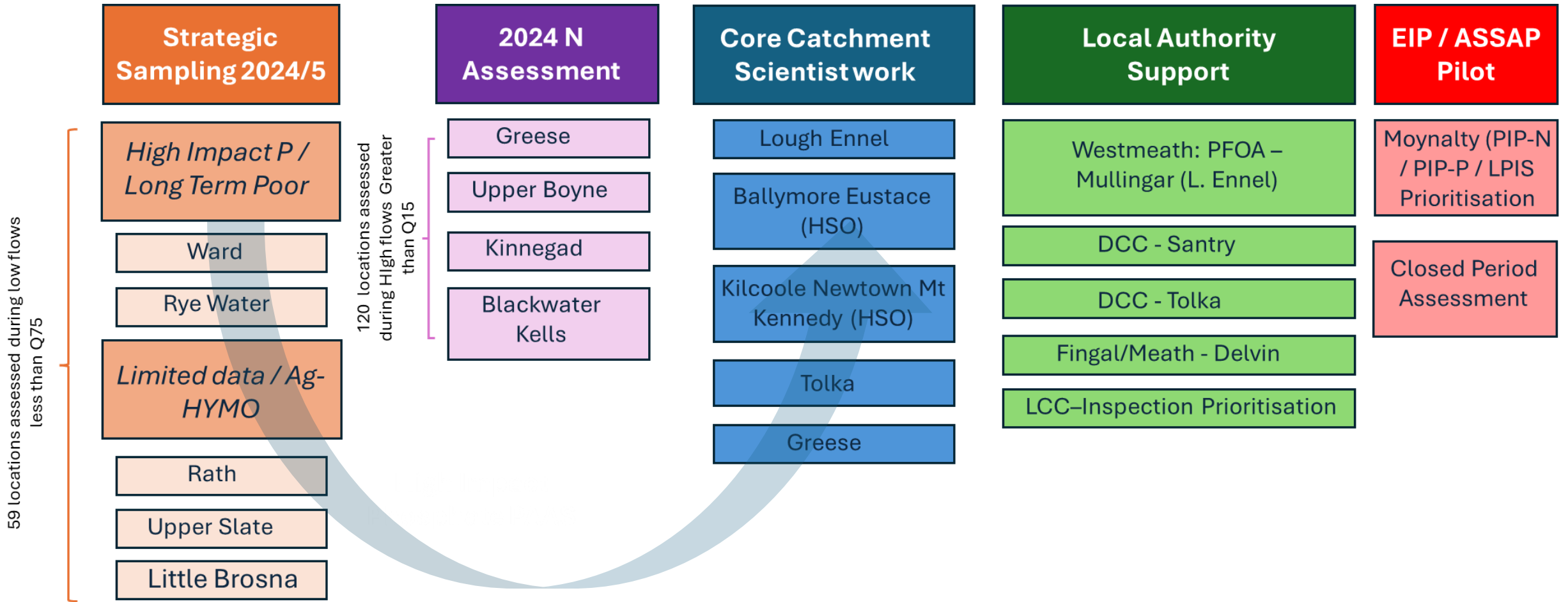
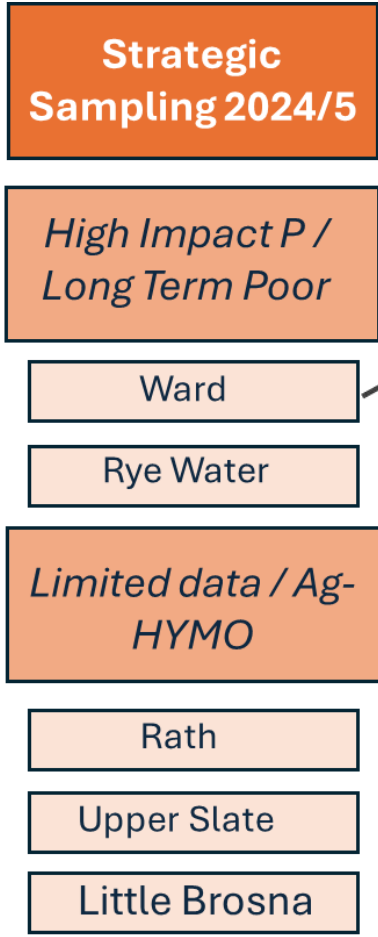


LAWPRO Regional Workplan (2024/5)

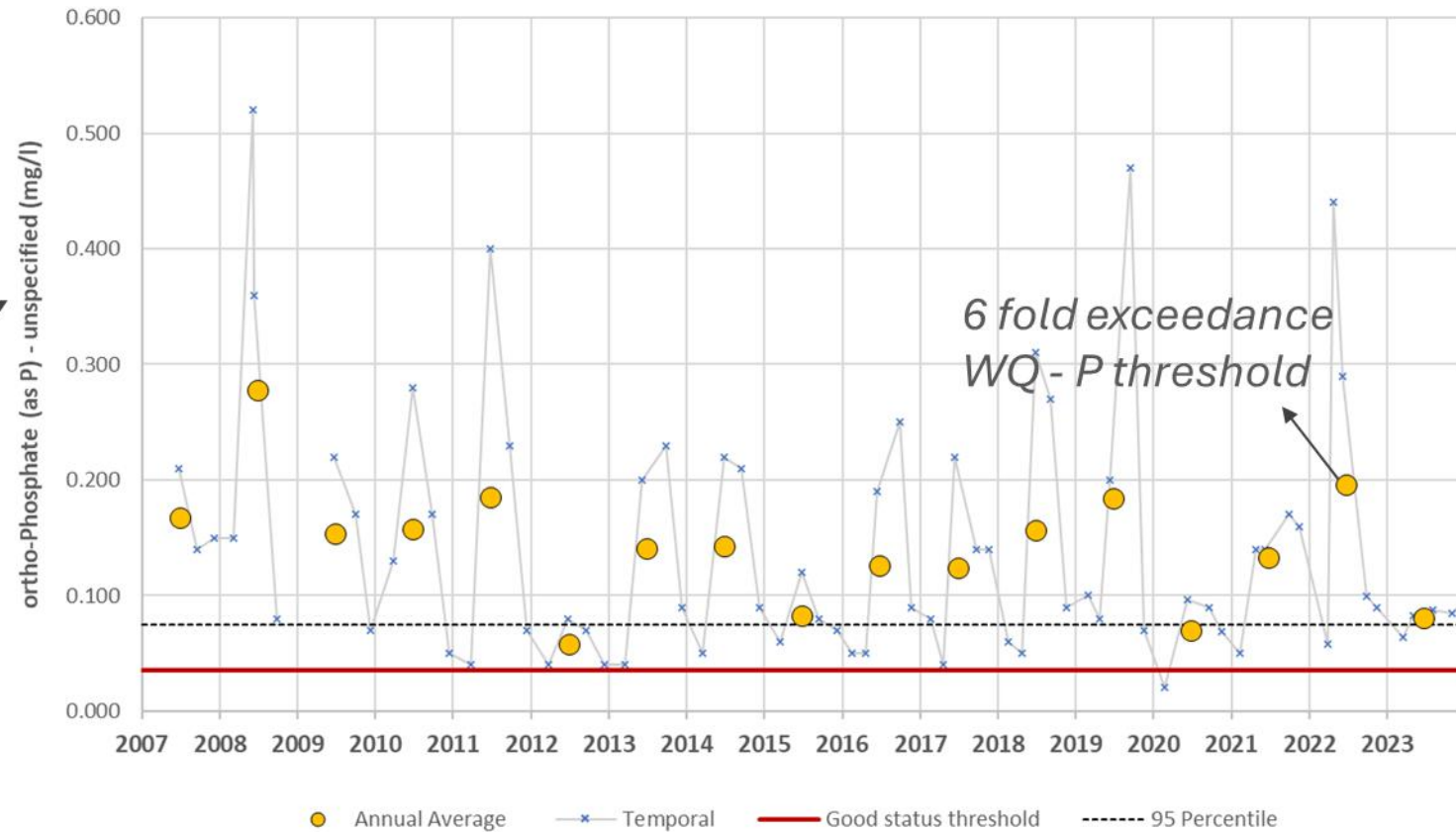


LAWPRO Regional Workplan (2024/5)

59 locations assessed during low flows less than Q75



WARD_040 WFD Mon Pt



LAWPRO Regional Workplan (2024/5)

59 locations assessed during low flows less than Q75

Strategic Sampling 2024/5

High Impact P / Long Term Poor

Ward

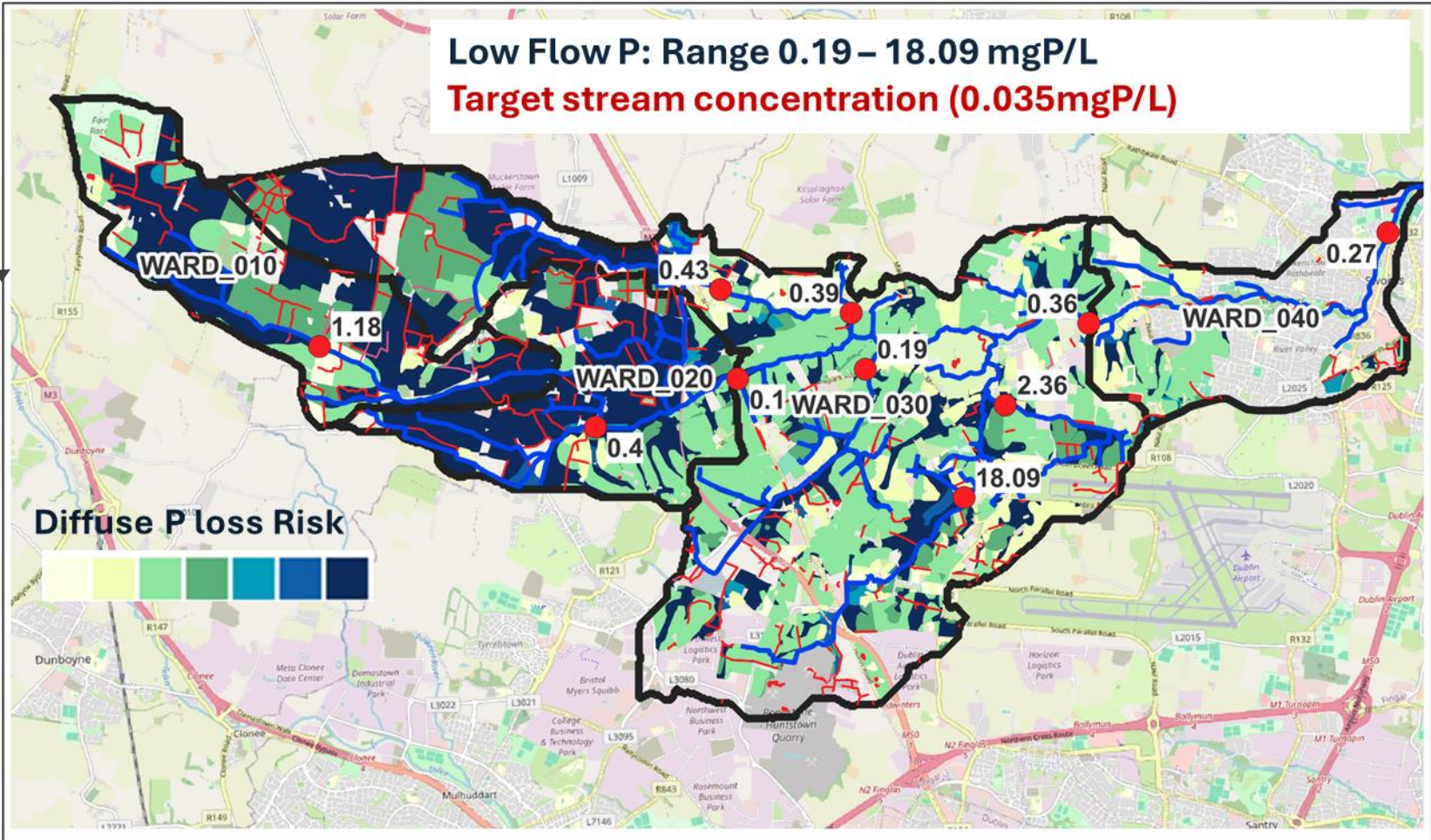
Rye Water

Limited data / Ag-HYMO

Rath

Upper Slate

Little Brosna



LAWPRO Regional Workplan (2024/5)

59 locations assessed during low flows
less than Q75

**Strategic
Sampling 2024/5**

*High Impact P /
Long Term Poor*

Ward

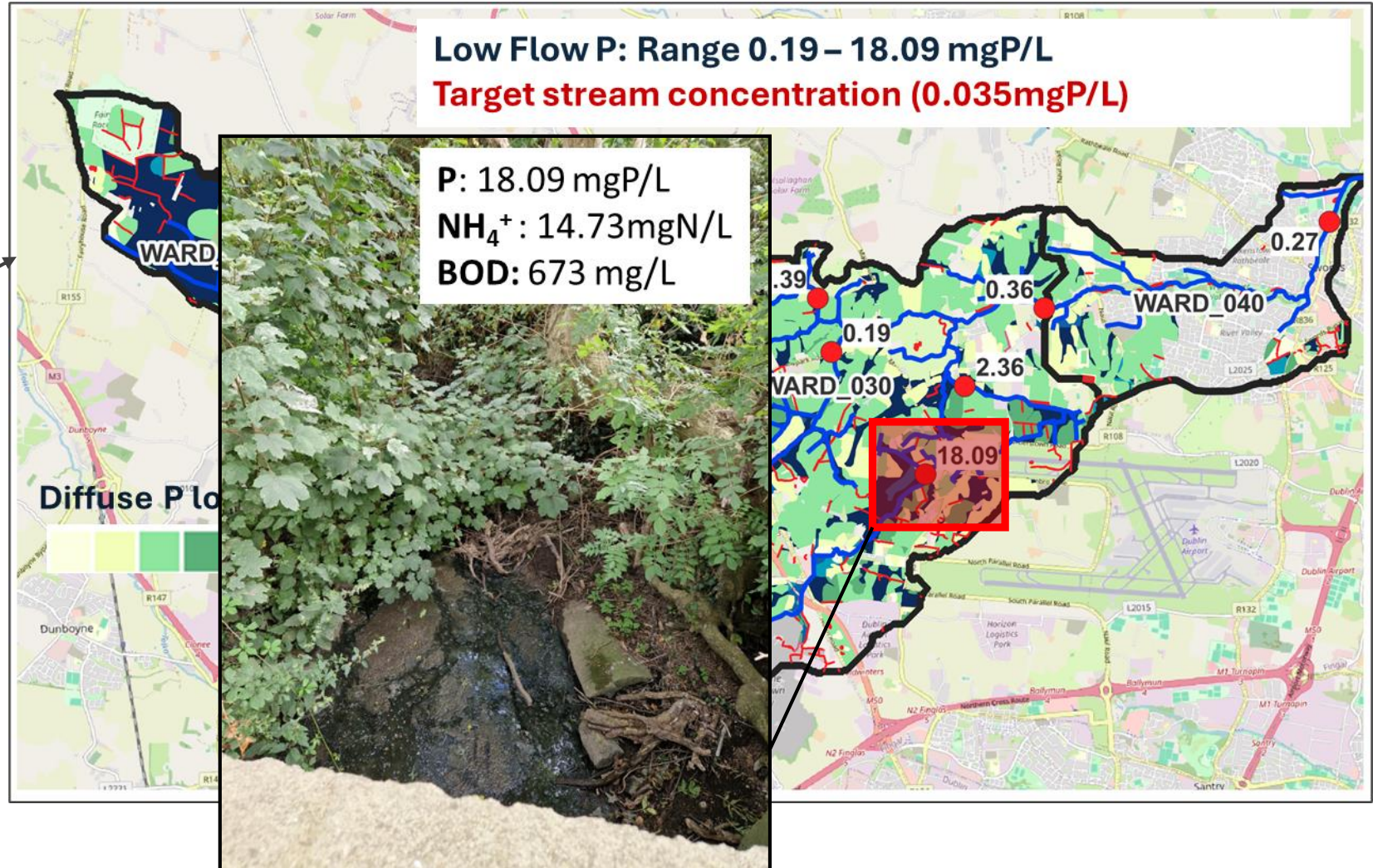
Rye Water

*Limited data / Ag-
HYMO*

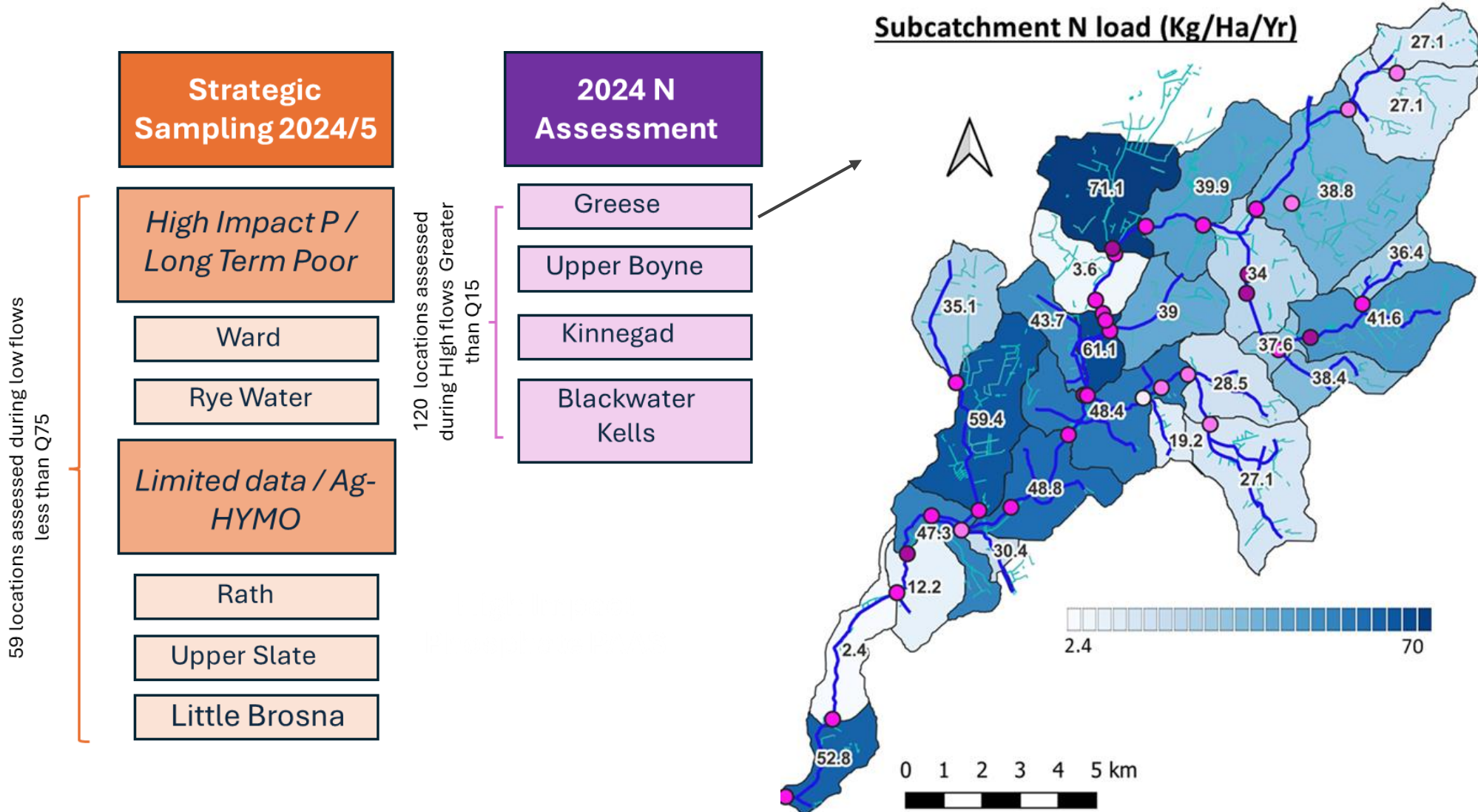
Rath

Upper Slate

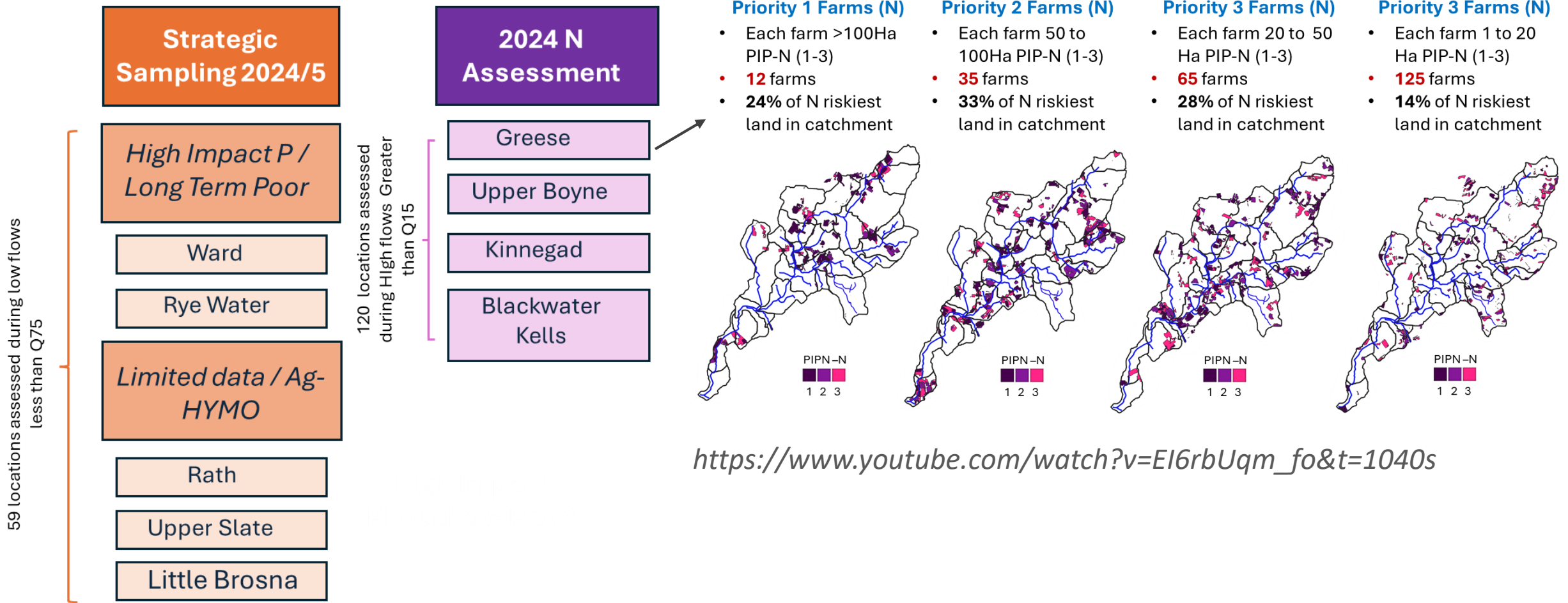
Little Brosna



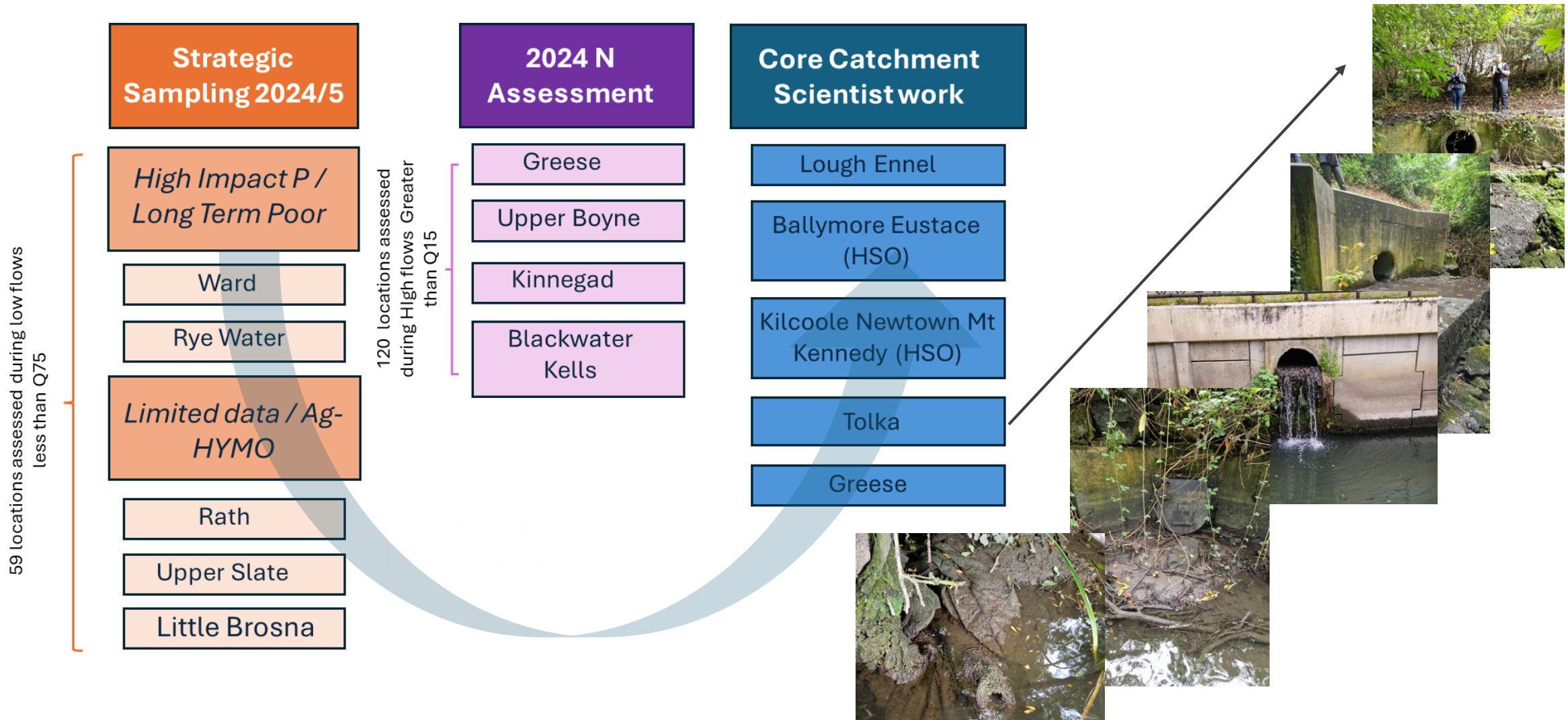
LAWPRO Regional Workplan (2024/5)



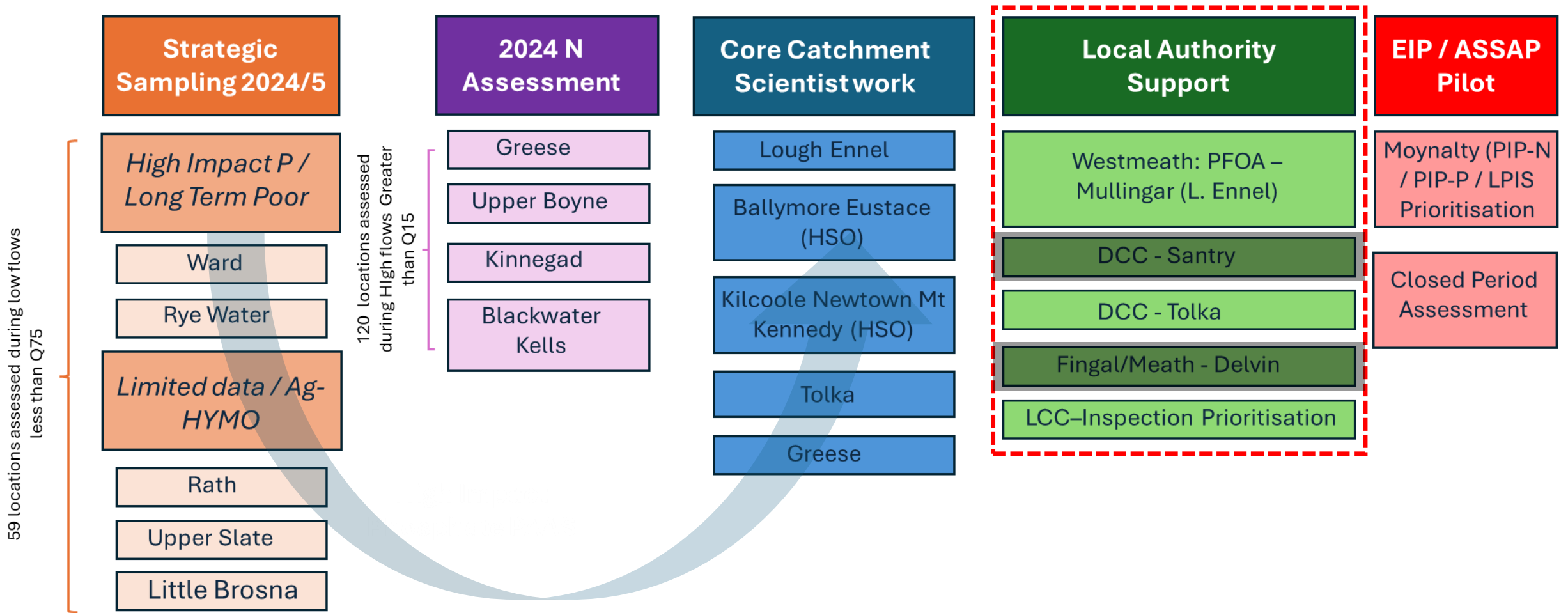
LAWPRO Regional Workplan (2024/5)



LAWPRO Regional Workplan (2024/5)



LAWPRO Regional Workplan (2024/5)



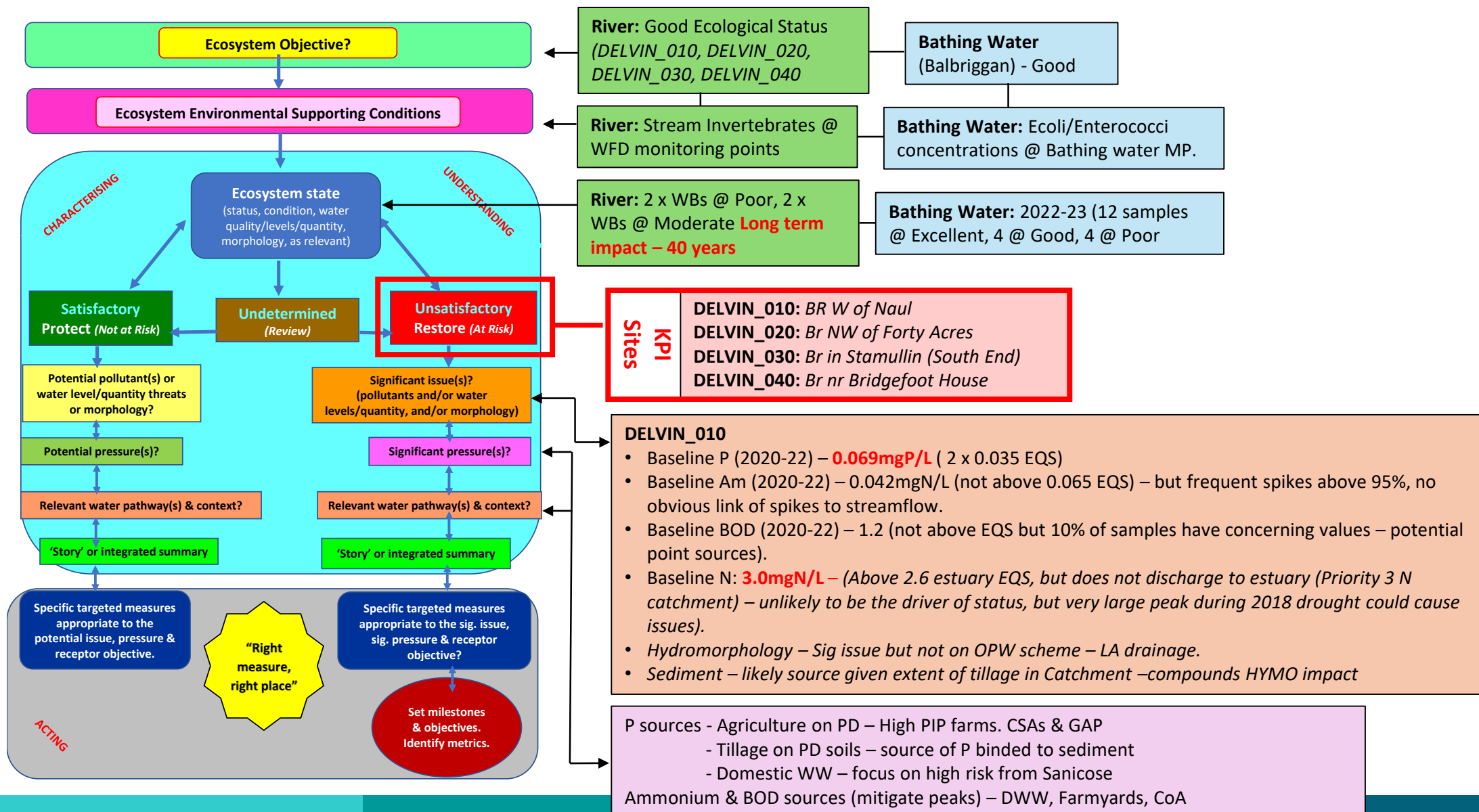
Delvin AFA - Local Authority Collaboration (Fingal CC/Meath CC/LAWPRO)



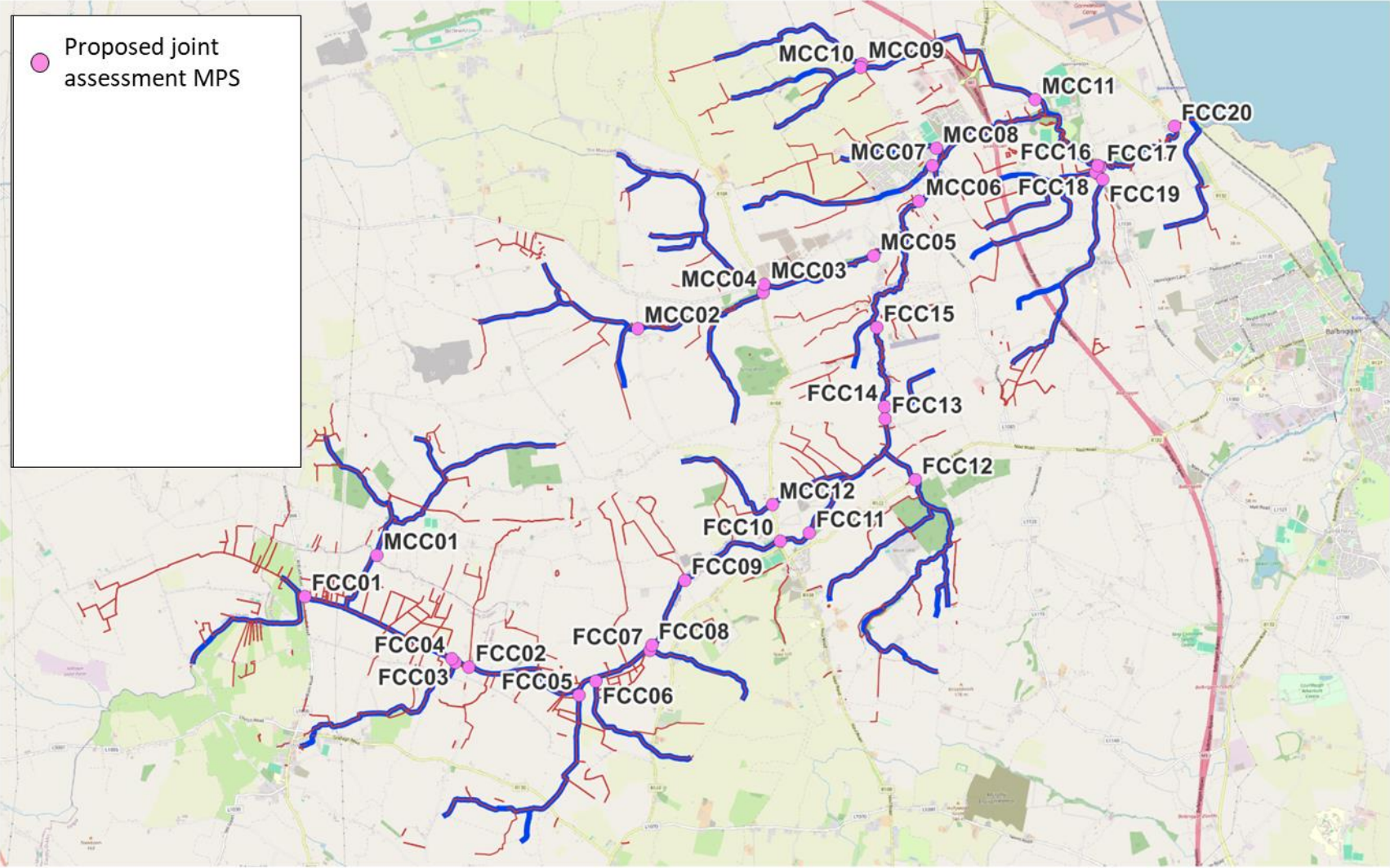
- **2nd October 2024** - Team effort between Fingal, Meath & LAWPRO Scientists
- 10 scientists on the ground working together on single day.
- 29 sites assessed during low flow conditions for chemistry & streamflow
- 10 sites assessed for stream biology & hydro-morphology

Delvin AFA - Local Authority Collaboration (Fingal CC/Meath CC/LAWPRO)

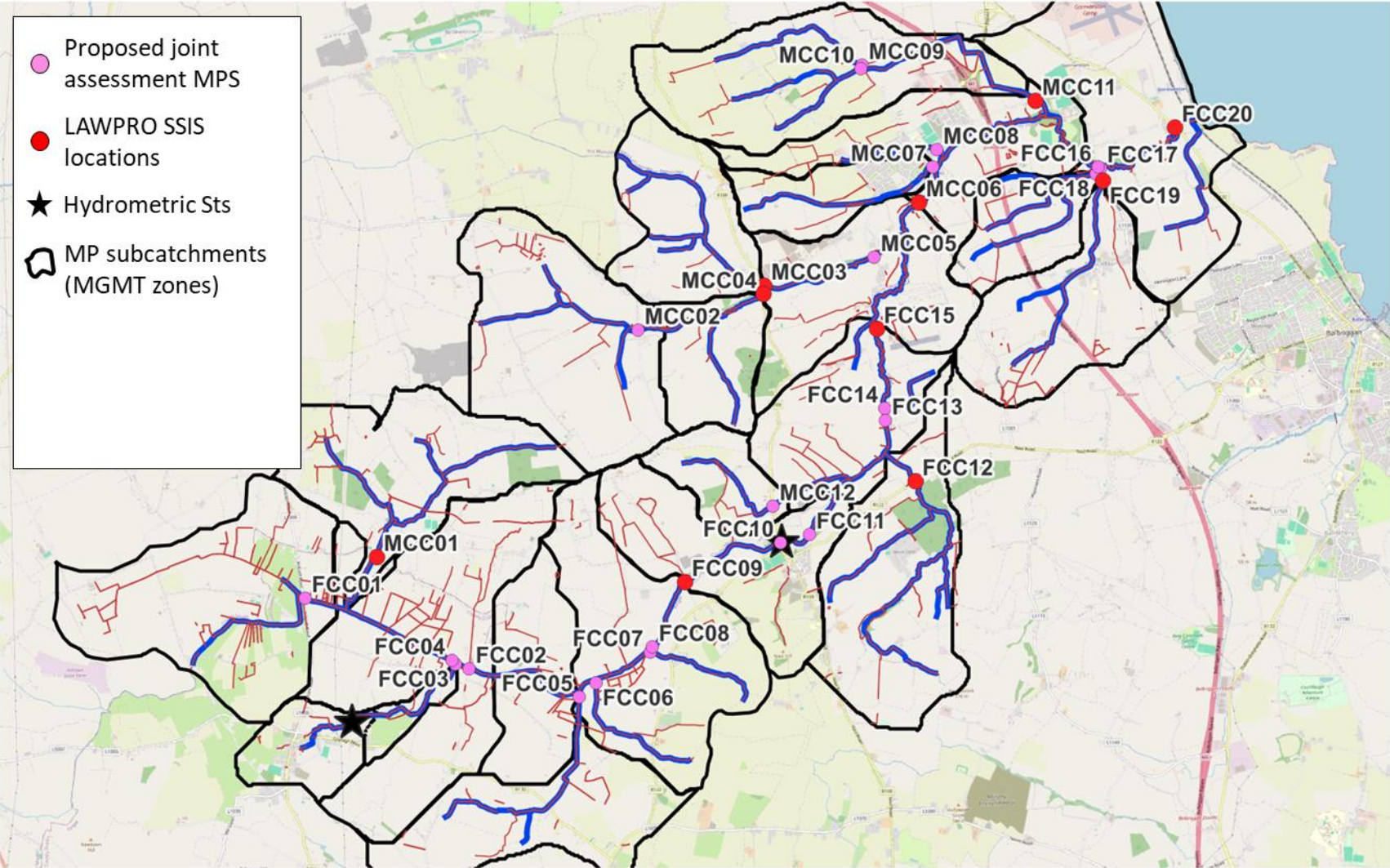
LAWPRO Toolbox Talk – Regional Operational Committee (2023)



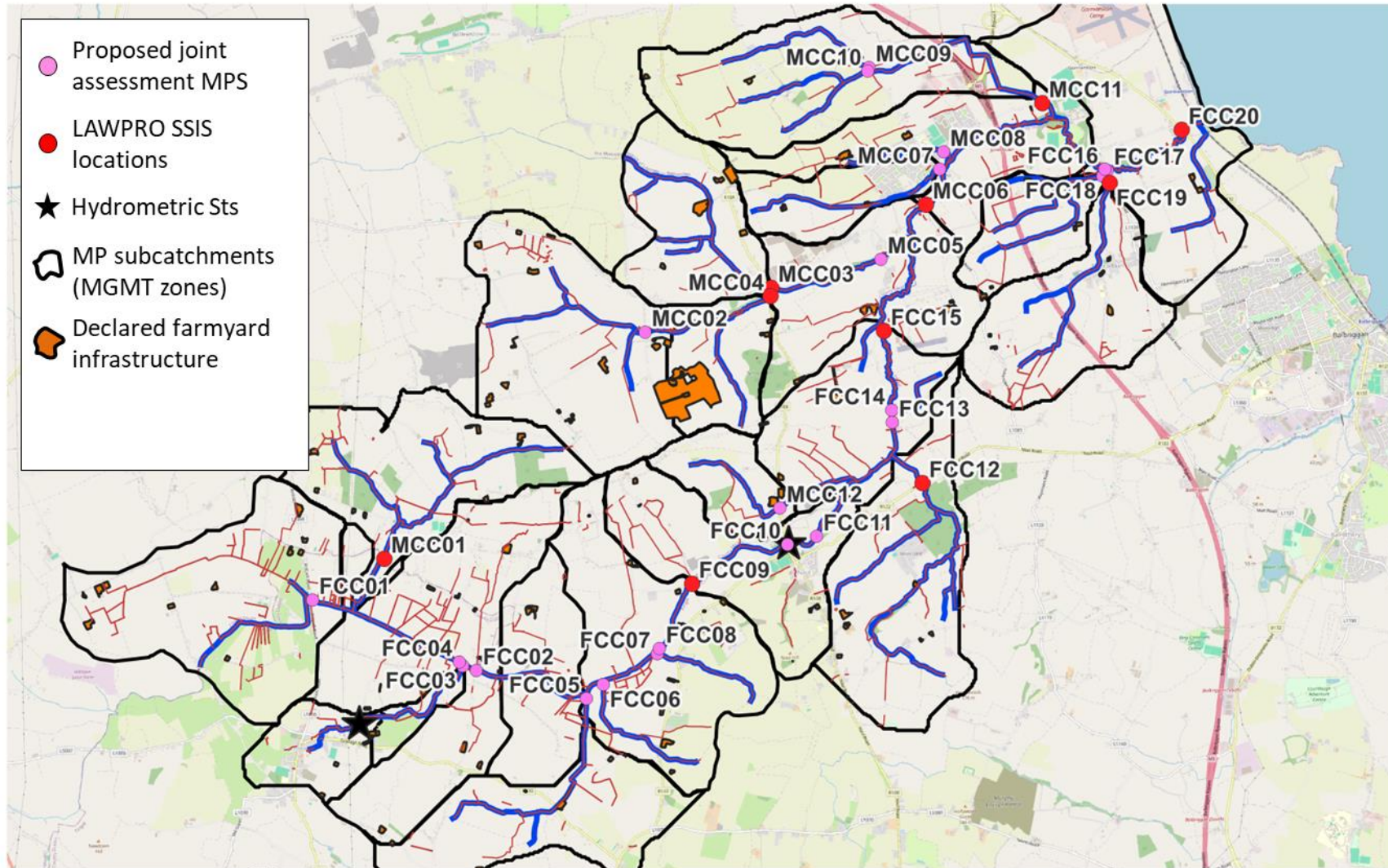
Delvin AFA - Local Authority Collaboration (SAMPLE SITES)



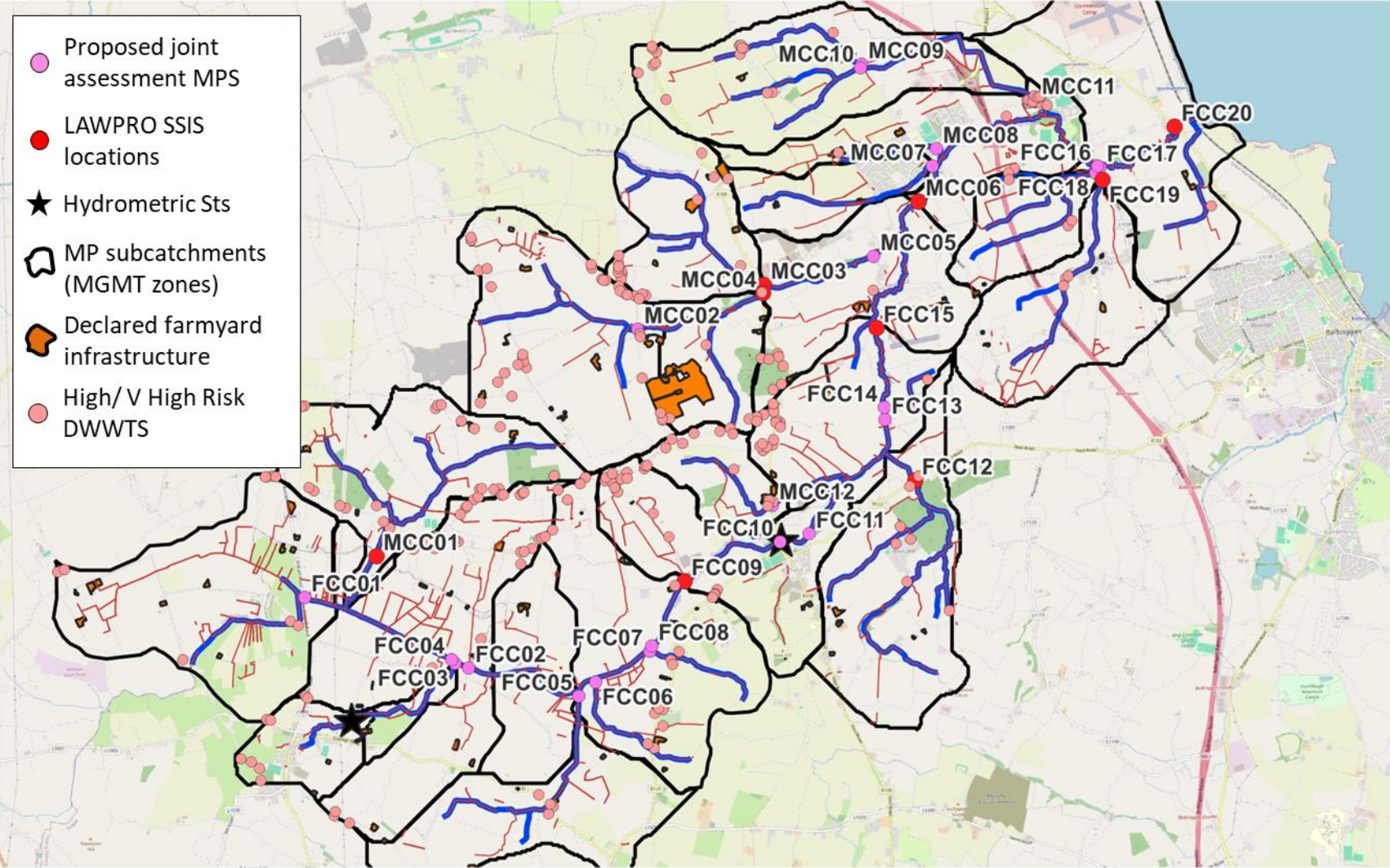
Delvin AFA - Local Authority Collaboration (MANAGEMENT ZONES)



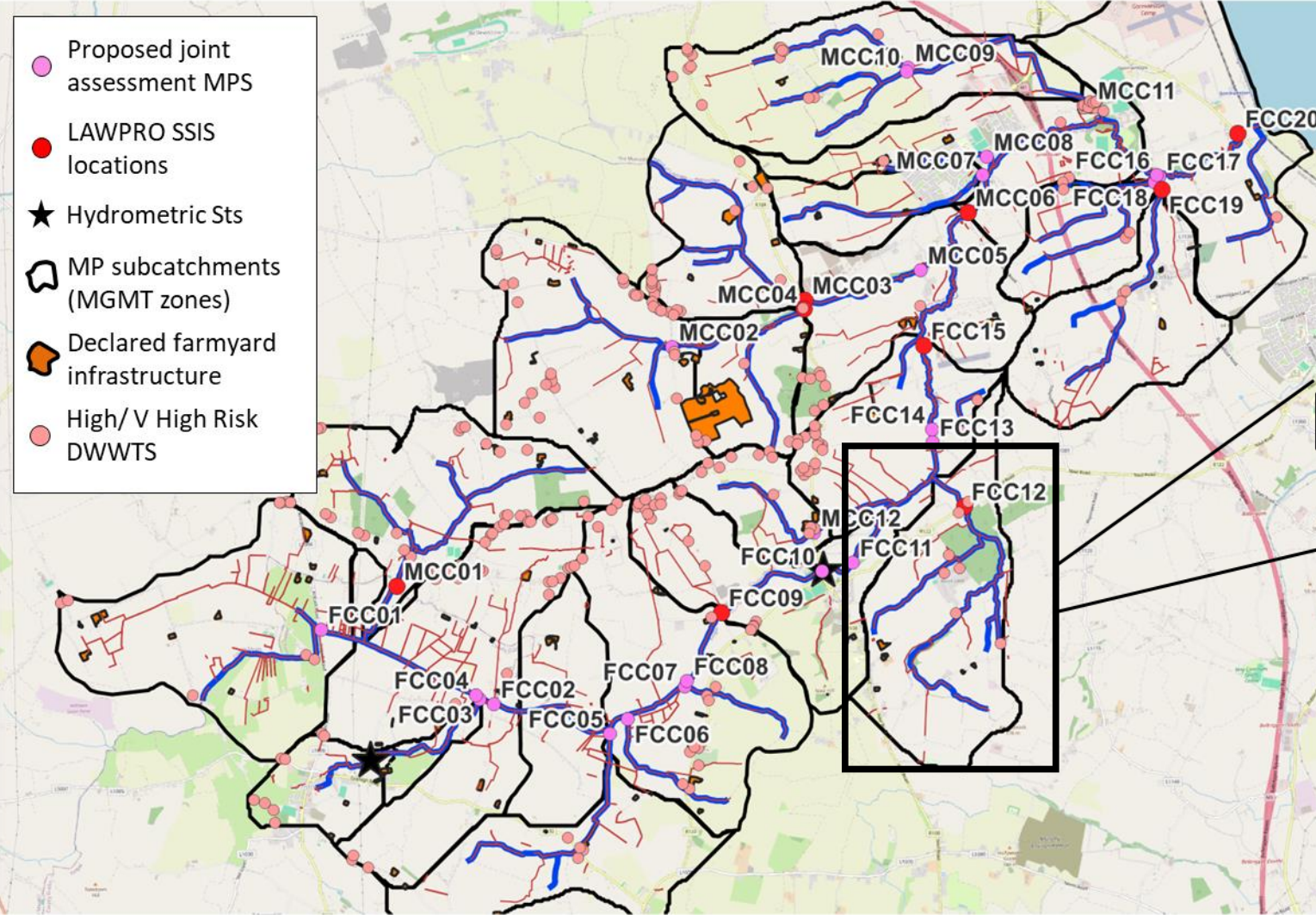
Delvin AFA - Local Authority Collaboration (POINT SOURCE - FARMYARDS)



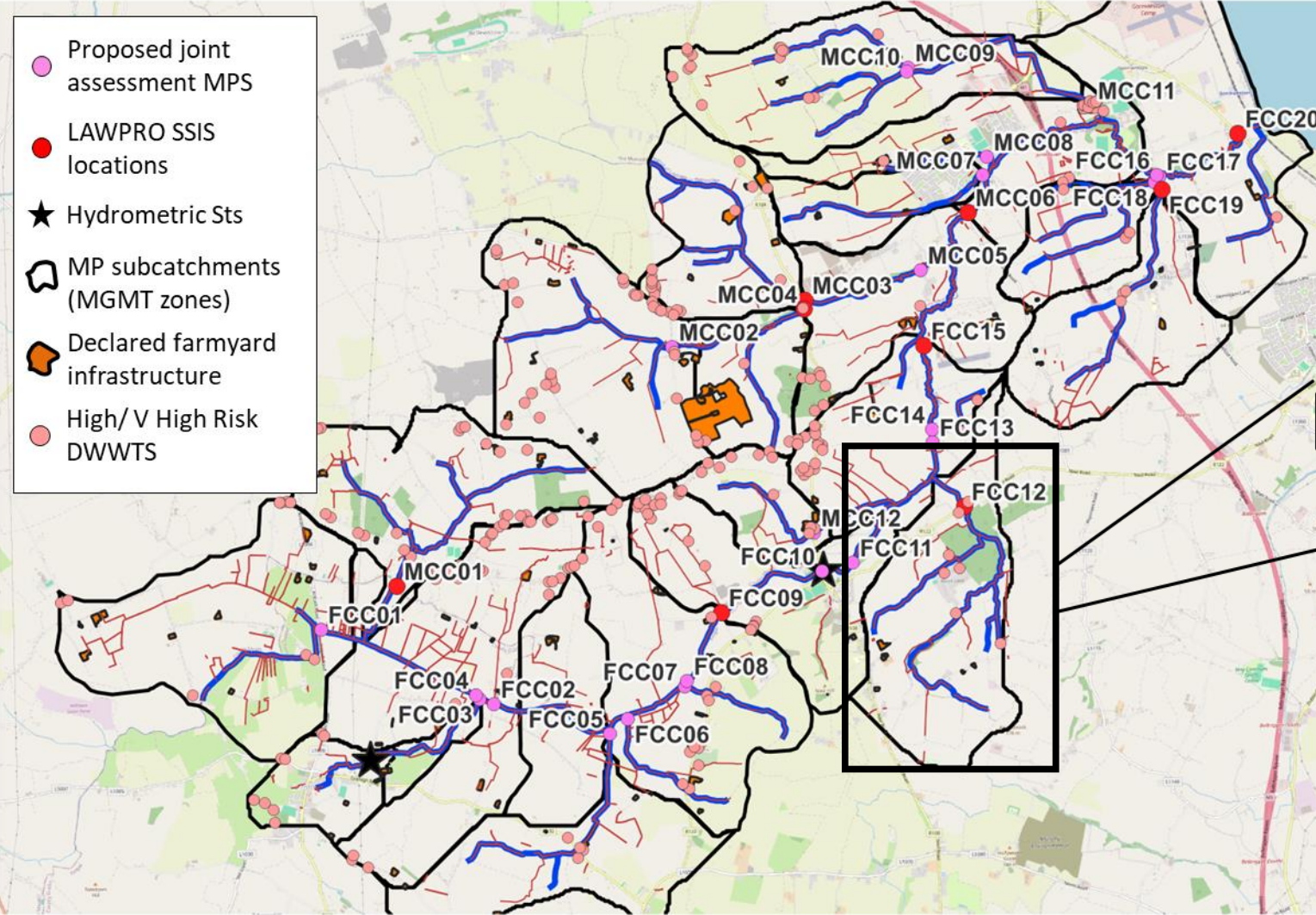
Delvin AFA - Local Authority Collaboration (POINT SOURCE – Domestic WW)



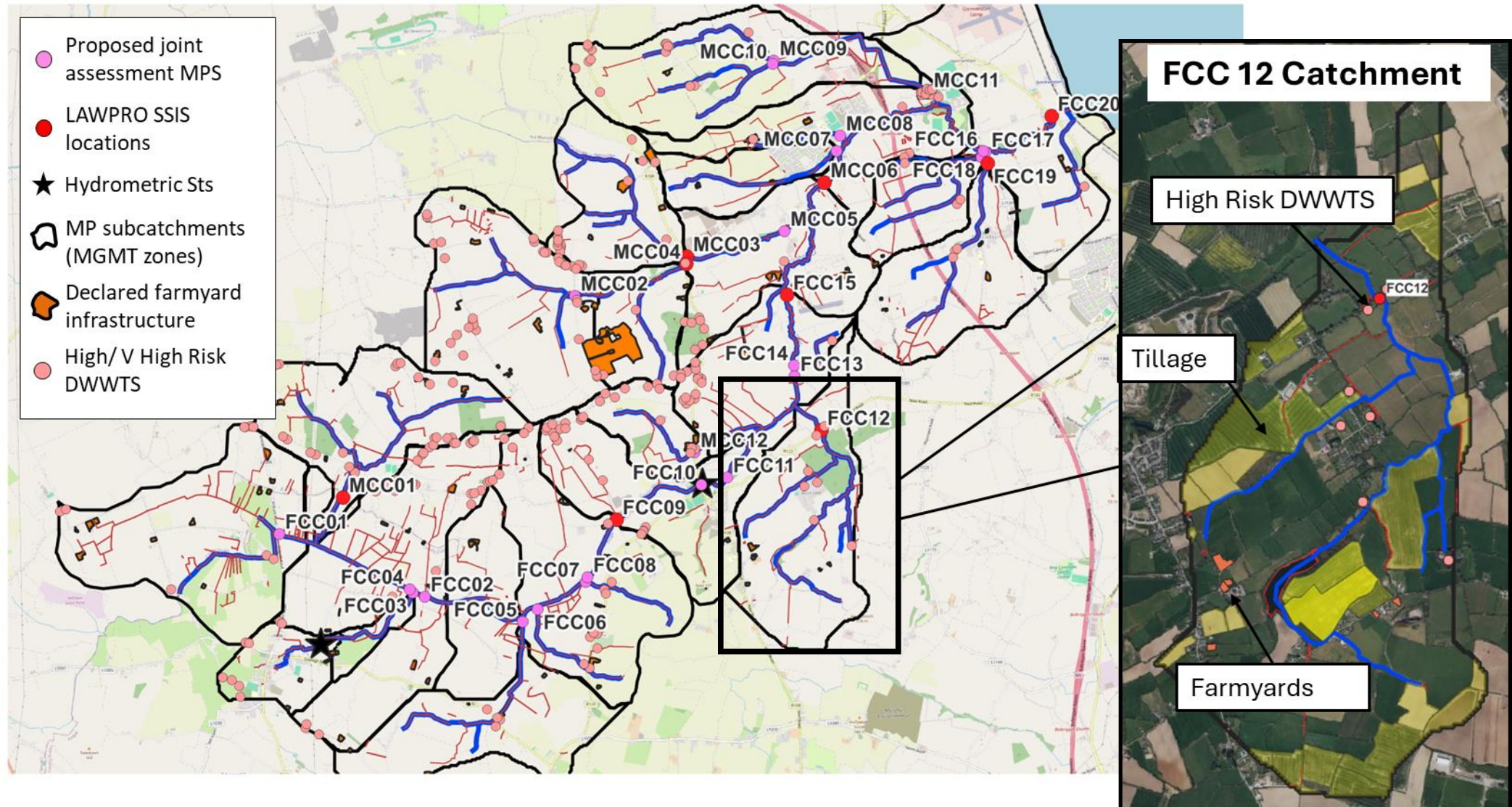
Delvin AFA - Local Authority Collaboration (MANAGEMENT ZONE EVIDENCE BASE)



Delvin AFA - Local Authority Collaboration (MANAGEMENT ZONE EVIDENCE BASE)



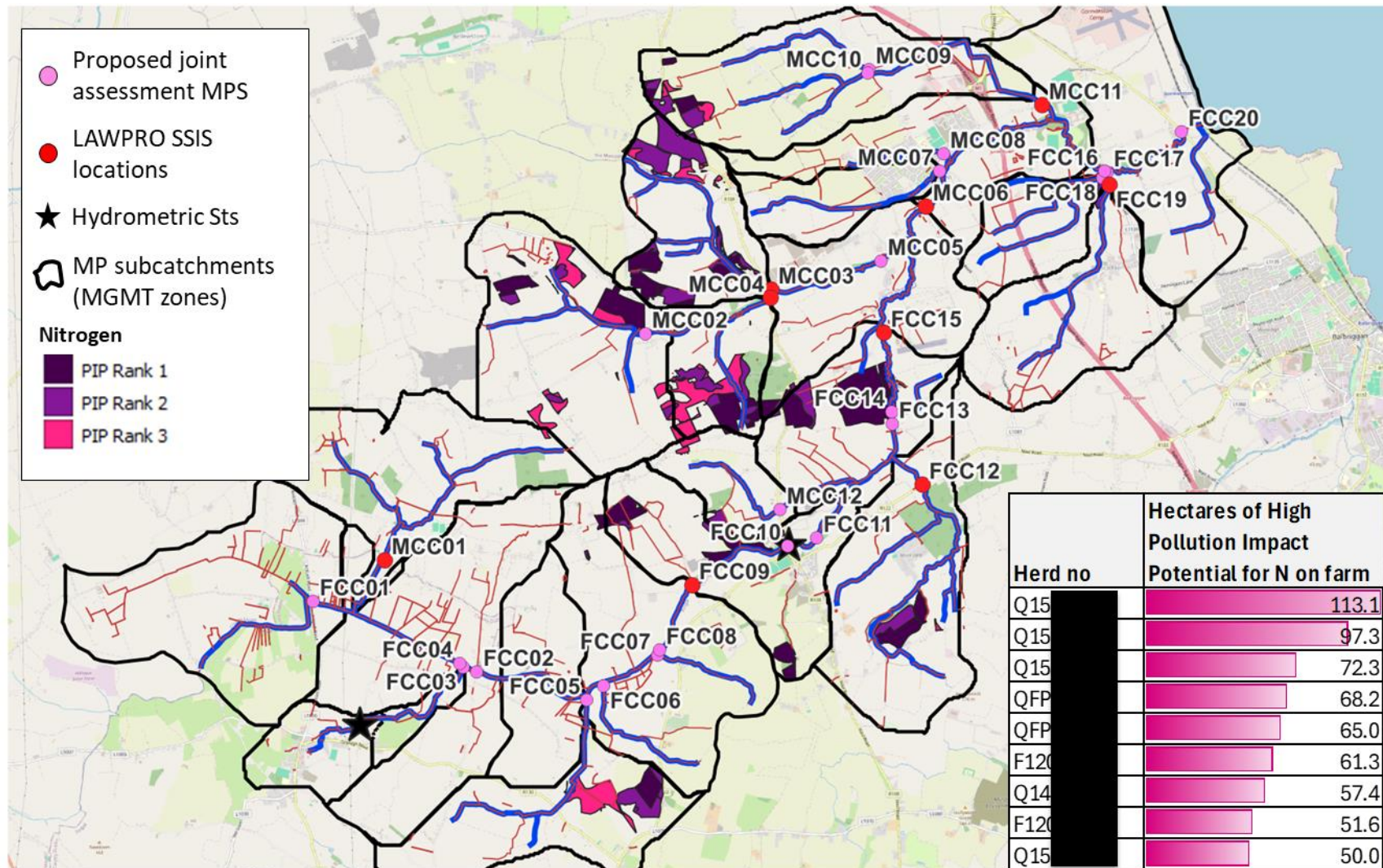
Delvin AFA - Local Authority Collaboration (MANAGEMENT ZONE EVIDENCE BASE)



Delvin AFA - Local Authority Collaboration (DIFFUSE NITRATE PRIORITISATION)

Priority 1 Nitrogen Impact farms

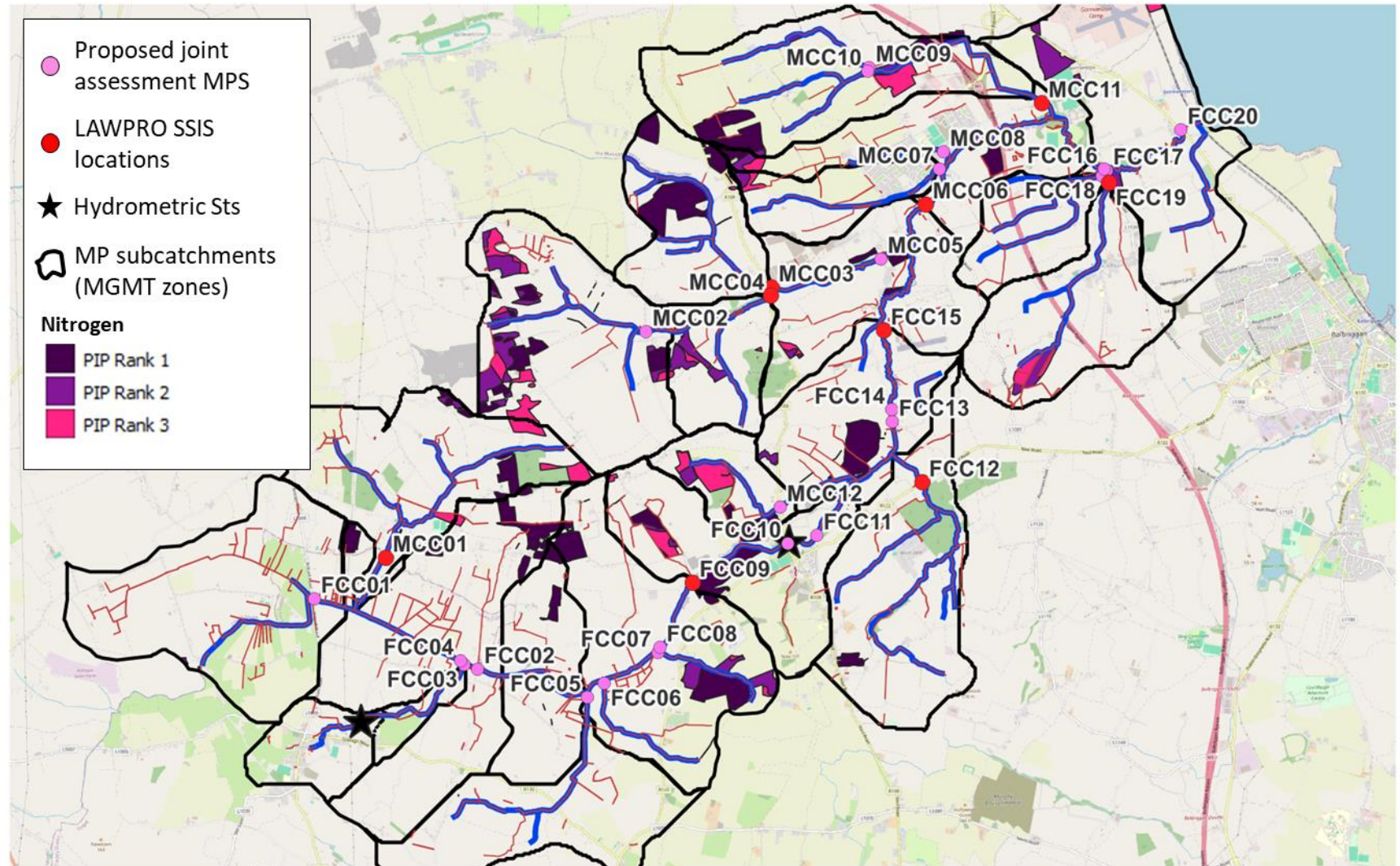
- 9 farms
- 30% of all High PIP-N land in the Catchment



Delvin AFA - Local Authority Collaboration (DIFFUSE NITRATE PRIORITISATION)

Priority 2 Nitrogen Impact farms

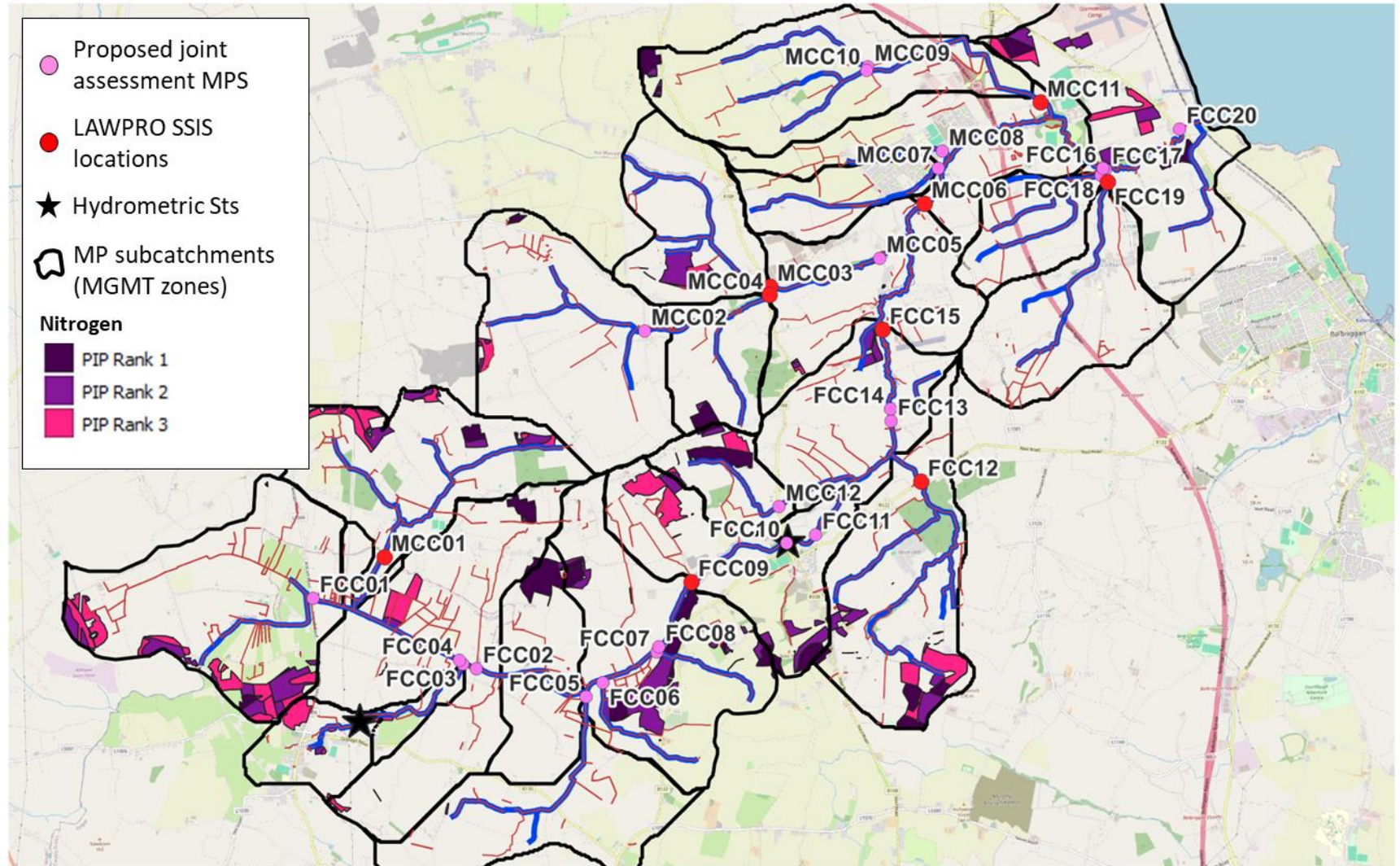
- 17 farms
- 31% of all High PIP-N land in the Catchment



Delvin AFA - Local Authority Collaboration (DIFFUSE NITRATE PRIORITISATION)

Priority 3 Nitrogen Impact farms

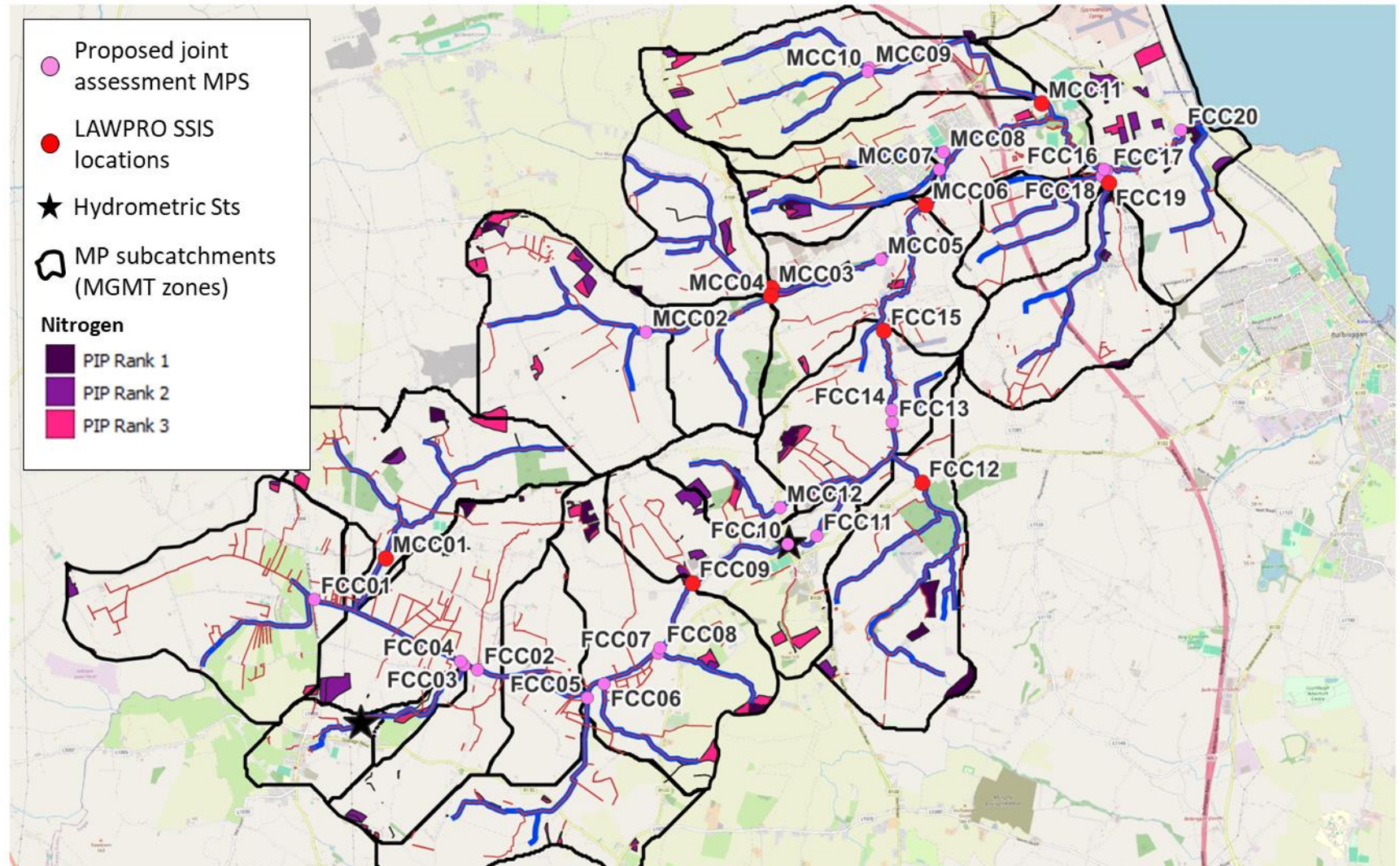
- 31 farms
- 26% of all High PIP-N land in the Catchment



Delvin AFA - Local Authority Collaboration (DIFFUSE NITRATE PRIORITISATION)

Priority 4 Nitrogen Impact farms

- 54 farms
- 13% of all High PIP-N land in the Catchment

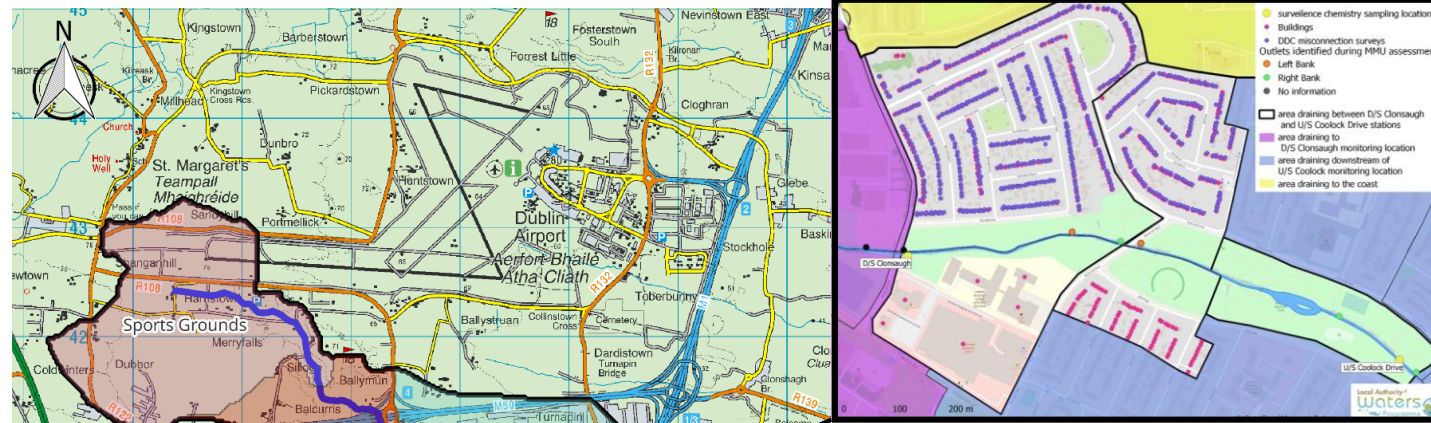


Santry AFA - Local Authority Collaboration (Dublin CC/Fingal CC/LAWPRO)

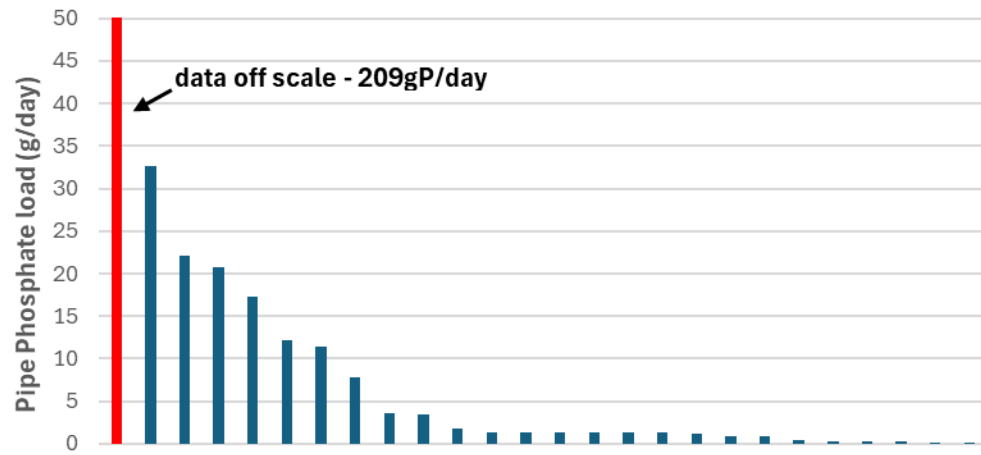


- **April 2023** - Team effort between DCC, Fingal & LAWPRO Scientists
- 20 scientists on the ground working together on single day.
- 56 (incl. 12 Stream locations) sites assessed during low to average flow conditions
- 44 pipe inflows confirmed – flows and chemistry collected.

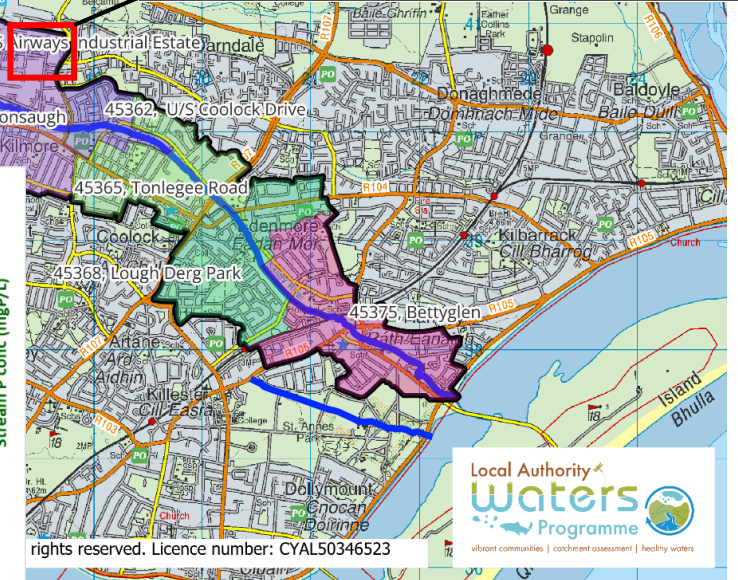
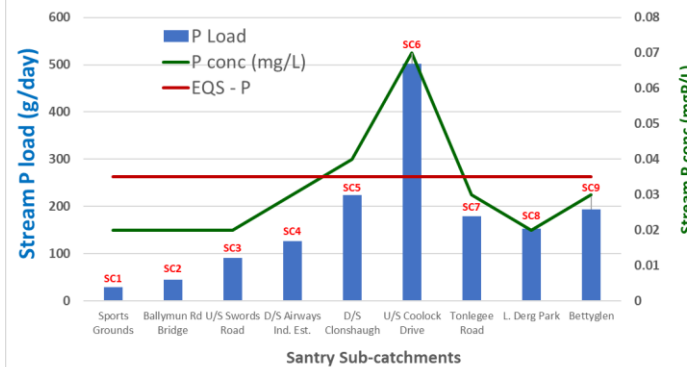
Santry AFA - Local Authority Collaboration (Dublin CC/Fingal CC/LAWPRO)



Santry Phosphate - Measured Pipe inflows



Santry River - Sub-catchment P loads & concentrations.



Synopsis

- ❖ Simple characterisation using CSM framework.
- ❖ Data driven Regional Workplan.
- ❖ Supporting N & P tools – *easily adaptable to inform farm inspection strategy.*
- ❖ Catchment Management zone approach
- ❖ LAWPRO Shared Service.



Environment Services Training Group

LOCAL AUTHORITY CONFERENCE

2024

WELCOME....



An Roinn Comhshaoil,
Aeráide agus Cumarsáide
Department of the Environment,
Climate and Communications



An Roinn Tithíochta,
Rialtais Áitiúil agus Oidhreacht
Department of Housing,
Local Government and Heritage



LOCAL AUTHORITY
Climate Action
Training Programme



Local Authority
Waters
Programme
vibrant communities | catchment assessment | healthy waters

CCMA
Cumann Lucht Bainistíochta Contae agus Cathrach
County and City Management Association



Environmental Protection Agency
An Ghníomhaireacht um Chaomhú Comhshaoil