

Environment Services Training Group

LOCAL AUTHORITY CONFERENCE

2024

Working Towards a Circular Economy

Cirtex Ltd. Case Study

Geraldine Glennon

Waste Enforcement Officer
Longford County Council



An Roinn Comhshaoil,
Aeráide agus Cumarsáide
Department of the Environment,
Climate and Communications



An Roinn Tithíochta,
Rialtais Áitiúil agus Oidhreacht
Department of Housing,
Local Government and Heritage



LOCAL AUTHORITY
Climate Action
Training Programme



Local Authority
Waters
Programme
vibrant communities | catchment assessment | healthy waters

CCMA
Cumann Lucht Bainistíochta Contae agus Cathrach
County and City Management Association



Environmental Protection Agency
An Ghníomhaireacht um Chaomhú Comhshaoil

Initially

- **Cirtex Ltd. was granted a Waste Facility Permit for their initial site within Longford Town in 2017 for the acceptance and dismantling of mattresses and soft furnishings.**
- **Furniture and mattresses fit for resale were sterilised and sold through an adjacent social enterprise scheme. (Longford Womens Link)**
- **Remaining products were stripped to their original components, steel springs, foam, wood, and textiles, and sent for recycling to various destinations.**

Enforcement

- **Waste Facility Permit Inspections were carried out on-site by Longford County Council Enforcement staff.**
- **There were issues concerning site tidiness, excess stock storage, and poor waste management practices.**
- **Complaints from local businesses and local representatives were received regarding the visibility of the untidiness of the site from the public street.**
- **A further complaint was also received from the Eastern Midlands WERLA in June 2019.**

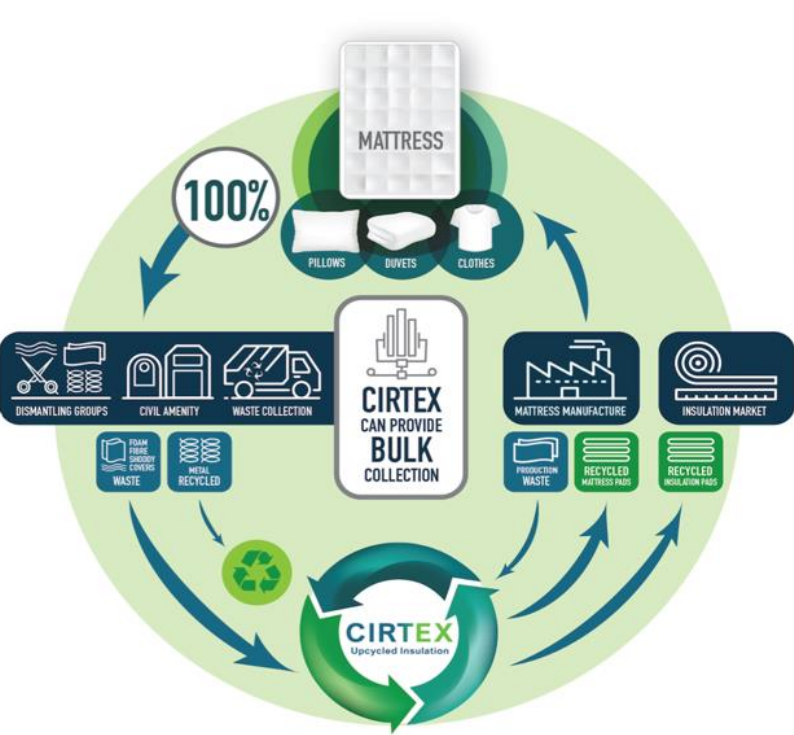
- **Longford County Council and WERLA conducted joint inspections in June and July 2019.**
- **Verbal and written warnings were issued to the company in June 2019 to improve the facility's operation and to operate within its capacity limits.**
- **Follow-up inspections took place on a four-week cycle for an interim period to ensure compliance.**
- **Certix Ltd. was eager to comply with all issues raised.**
- **They reduced the volume of material on-site, erected storage bays, and completed the construction of a steel frame structure for storage.**

- **The shredder was moved to a new location, ensuring that the process was adequately screened from the public view.**
- **As a result of their cooperation, no enforcement action was required.**
- **Longford County Council, Environment Section encourages local businesses to succeed and create local employment.**
- **Cirtex Ltd., subsequently saw an opportunity to expand its business and in 2022 they commenced their new manufacturing process at a separate second location.**

Currently

- **Cervix Ltd., operate this second facility based on the outskirts of Longford Town, it is a 100% upcycling company. They manufacture insulation products and padding for furniture and the bedding industry from recovered textiles.**
- **They remove the covers, foam, springs, and fibre from the mattresses. The foam is sent to India for reuse as carpet underlay and the steel springs are sent separately for recycling. The fibre is processed at the facility to produce the padding that goes on either side of the springs within mattresses, padding in headboards, and padding in deckchair cushions etc.**
- **They take in textile mattresses and other waste fabric material to manufacture insulation and padding that goes back into the furniture and bedding industry.**

Cirtex Business Model



Cirtex's Mission

- 1) Eliminate waste from the textile industry.**
- 2) Create jobs.**
- 3) Help with the Circular Economy.**
- 4) Reduce Greenhouse gas emissions.**

The Process

- **Cirtex Ltd. was featured on the RTE programme “Heated” in October 2023. RTE crew spent one day on-site filming their process.**
- **I am showing you this clip here as it describes and illustrates the entire upcycling process involved.**



- **There are over half a million mattresses dumped each year in Ireland, not to mention the pillows, duvets, and cushions also being dumped every year. Most of this material is going for incineration. That could equate to approximately 50,000 to 60,000 Tonnes of waste that goes for incineration each year in Ireland that could be upcycled.**
- **Cirtex Ltd., are unique in the fact that they produce a product for the customer, i.e. the bedding while offering a take-back service of their customer's post-production waste for upcycling at their facility. Eliminating waste going for incineration.**

500,000 mattresses incinerated annually



Capacity

- **Currently, Cirtex Ltd., only has access to 10%, 50,000, of the half a million mattresses that are discarded every year in Ireland. Most are going for incineration. If they had access to the material the Cirtex facility has the capacity to handle >200,000 mattresses annually.**
- **Cirtex Ltd., currently processes 100,000 mattresses annually. With only 50,000 of these mattresses sourced from the Irish market. Unfortunately, they are forced to source the other 50,000 from the UK which goes against their ethos and increases the carbon footprint of the process.**

BEHAVIOUR CHANGE NEEDED FOR CIRCULAR ECONOMY



The government/local authorities can stimulate change.

A properly functioning circular economy does not only depend on the government and industry.



Consumers have a role to play: choosing sustainable products

Consumers also contribute to a circular economy by using things longer, repairing them or taking them for recycling/upcycling.

ONE CHANGE = GAME CHANGER

Decision taken by all County Councils to eliminate incineration

Mattresses now stored in dry environment



Ensure Mattress are upcycled



500,000 Mattresses no longer incinerated

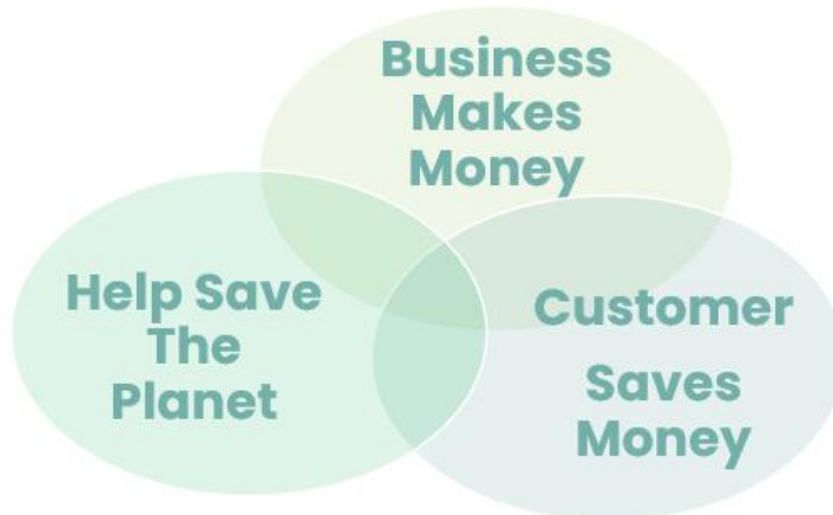


- Reduce Emissions
- Customers Save Money
- Support Local Enterprise



Help Irish Government Agenda:

To Reduce Emissions by 51% by 2030

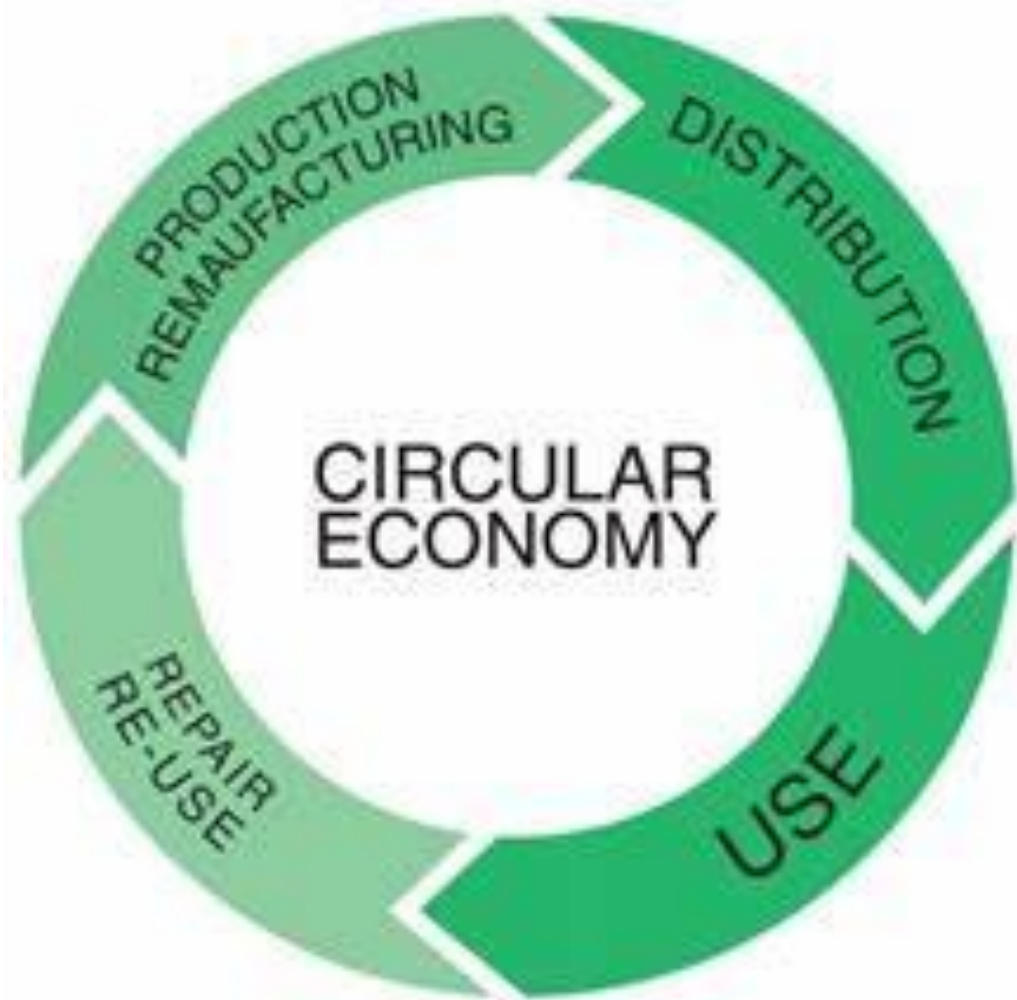


Council Amnesty Days

- **During 2024, Cirtex Ltd, collaborated with the following Local Authorities in tandem with the Mattress Amnesties program to gather used mattresses.**
- **Meath,**
- **Kerry,**
- **Clare,**
- **Wexford,**
- **Longford,**
- **Leitrim,**
- **Tipperary,**
- **Dublin City South Dublin (Ballyfermot/Cherry Orchard/Inchicore**
- **Dun Laoghaire / Rathdown**
- **Dublin City Northwest (Finglas / Ballymun)**
- **Dublin City Council Central (Cabra/Glasnevin**

How can we help?

- **Local Authorities can request that mattresses collected at their Civic Amenity sites be stored and collected by Cirtex Ltd., for upcycling rather than going for incineration.**
- **Alternatively Local Authorities could hold mattress amnesties. Cirtex Ltd., can be available to be on-site. They will load the mattresses and transport them to their own site for upcycling. They can transport in volumes of 250 or 500 mattresses.**



Cirtex's process is a circular economy initiative, encouraging us to move away from the 'take make and dispose' culture to one of returning valuable materials and keeping them in the economy for as long as possible.

Contact

Contact details for Cirtex Ltd., to arrange mattress collections are

Rick Earley	– (086) 247 9213
David Garland	– (087) 818 1243
Ciaran Earley	– (083) 838 0912
Landline	– (043) 334 7511

Thank you for listening

